

Logic Elements

CP701-1

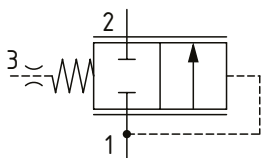
Logic Element, Normally Closed, Spool Type, Pilot to Close

350 bar [5000 psi] • 150 l/min [40 US gpm]

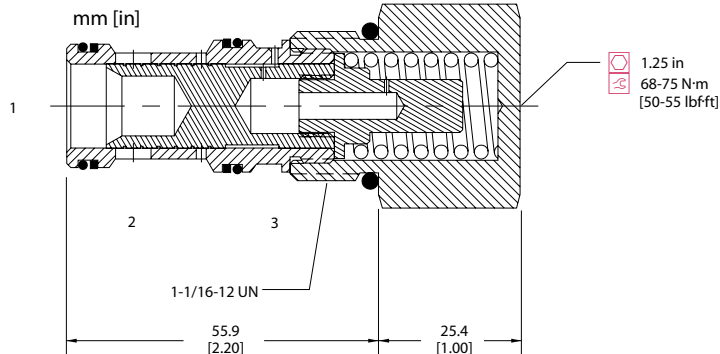
DESCRIPTION AND OPERATION

This is a 3-ported, normally closed, pilot to close spool type logic element. By opening port 3 to tank, flow can pass from port 1 to port 2. Flow is blocked from port 1 to port 2 unless the pressure is high enough in port 1 to overcome the spring set pressure. Applying pressure to port 3 will increase the pressure required in port 1 to open the valve by a factor of 1 to 1. This valve is ideal for use as a pressure compensator, bypass valve, or a pilot to close valve in regenerative circuits.

SCHEMATIC



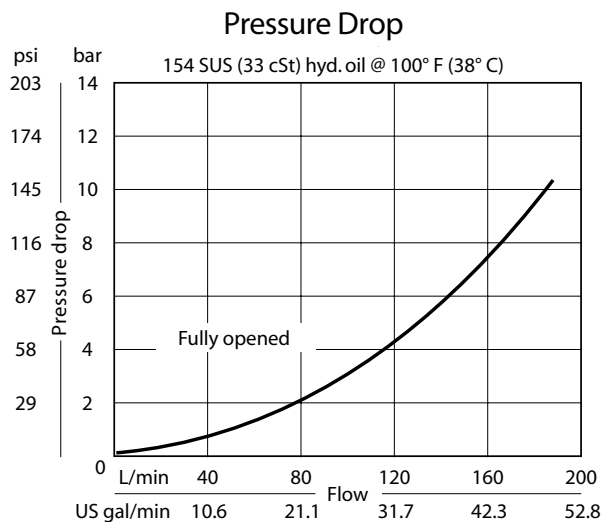
DIMENSIONS



PERFORMANCE DATA

Rated pressure	350 bar [5000 psi]
Rated flow	150 l/min [40 US gpm]
Weight	0.26 kg [0.57 lb]
Cavity	CP12-3S

PERFORMANCE CURVES



MODEL CODE

CP701 - 1 - B - 12S - 080

Seal Option

Code	Seal kit
B-Buna - N	120335
V-Viton	120336

Housing

Code	Ports & Material	Housing Model Code	Pilot port
0	No Housing		
4B	AL, 1/2 BSP	CP12-3S-4B/2B	1/4 BSP
6B	AL, 3/4 BSP	CP12-3S-6B/2B	1/4 BSP
10S	AL, #10 SAE	CP12-3S-10S/4S	#4 SAE
12S	AL, #12 SAE	CP12-3S-12S/4S	#4 SAE

Differential Pressure

Code	Bar	Psi
030	2.1	[30]
050	3.5	[50]
080	5.5	[80]
100	6.9	[100]
150	10.3	[150]
170	11.7	[170]

* Aluminum bodies are to be used for pressures less than 210 bar [3000 psi].

* Additional housings available