

Logic Elements

HLE10-CPC

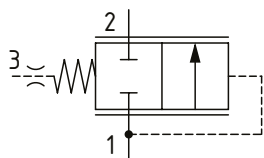
Logic Element, Normally Closed, Spool Type, Pilot to Close

350 bar [5000 psi] • 80 l/min [21 US gpm]

DESCRIPTION AND OPERATION

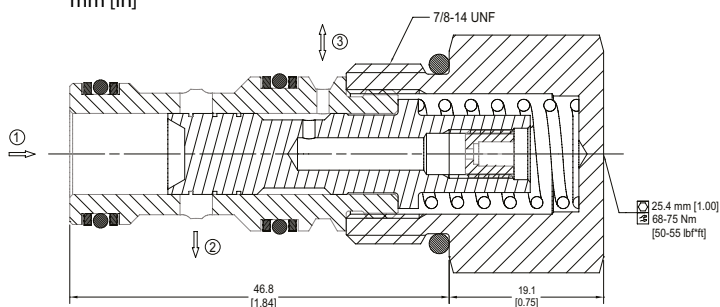
This is a 3-ported, normally closed, pilot to close spool type logic element. By opening port 3 to tank, flow can pass from port 1 to port 2. Flow is blocked from port 1 to port 2 unless the pressure is high enough in port 1 to overcome the spring set pressure. Applying pressure to port 3 will increase the pressure required in port 1 to open the valve by a factor of 1 to 1. This valve is ideal for use as a pressure compensator, bypass valve, or a pilot to close valve in regenerative circuits.

SCHEMATIC



DIMENSIONS

mm [in]

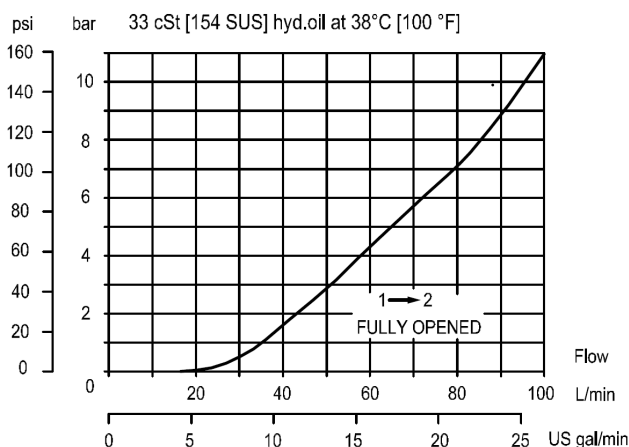


PERFORMANCE DATA

Rated pressure	350 bar [5000 psi]
Rated flow	80 l/min [21 US gpm]
Weight	0.14 kg [0.31 lb]
Cavity	SDC10-3S

PERFORMANCE CURVES

Pressure Drop



MODEL CODE

HLE10 - CPC - 2.75 - B - 00

Differential Pressure

Code	Bar	Psi
2.75	2.75	[40]
5.5	5.5	[80]
7.5	7.5	[110]
10.0	10.0	[150]
13.0	13.0	[190]
15.0	15.0	[220]

Seal Option

Code	Seal kit
B-Buna - N	11126248
V-Viton	11126249

Housing

Code	Ports & Material	Housing Model Code
00	No housing	
6S	AL, #6 SAE	SDC10-3S-6S
8S	AL, #8 SAE	SDC10-3S-8S
3B	AL, 3/8 BSP	SDC10-3S-3B
4B	AL, 1/2 BSP	SDC10-3S-4B
S6S	STEEL, #6 SAE	SDC10-3S-S6S
S8S	STEEL, #8 SAE	SDC10-3S-S8S

* Aluminum bodies are to be used for pressures less than 210 bar [3000 psi].

* Additional housings available