

# Logic Elements

## HLE10-OPO

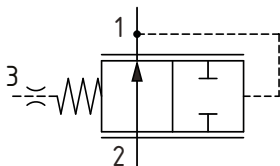
Logic Element, Normally Open, Spool Type, Pilot to Open

350 bar [5000 psi] • 60 l/min [16 US gpm]

### DESCRIPTION AND OPERATION

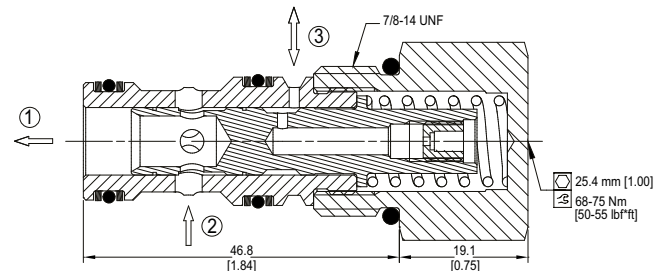
This is a 3-ported, normally open, pilot to open, spool type logic element. Flow is open from port 2 to port 1, until pressure in port 1 is sufficient to overcome the spring set pressure plus any pressure in port 3. The pressure in port 3 can be controlled remotely making the valve ideal for use as a normally open on/off element in a pressure reducing function. This valve is most commonly used as a pressure compensator in conjunction with a proportional directional valve.

### SCHEMATIC



### DIMENSIONS

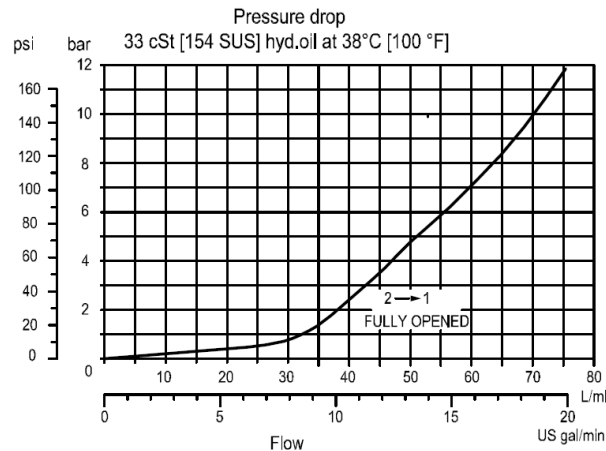
mm [in]



### PERFORMANCE DATA

Rated pressure	350 bar [5000 psi]
Rated flow @ 7 bar [100 psi]	60 l/min [16 US gpm]
Weight	0.14 kg [0.31 lb]
Cavity	SDC10-3S

### PERFORMANCE CURVES



### MODEL CODE

**HLE10 - OPO - 2.75 - B - 00**

#### Differential Pressure

Code	Bar	Psi
2.75	2.75	[40]
5.5	5.5	[80]
7.5	7.5	[110]
10.0	10.0	[150]
13.0	13.0	[190]
15.0	15.0	[218]

#### Seal Option

Code	Seal kit
B-Buna - N	11126248
V-Viton	11126249

#### Housing

Code	Ports & Material	Housing Model Code
00	No housing	
6S	#6 SAE, AL	SDC10-3S-6S
8S	#8 SAE, AL	SDC10-3S-8S
S6S	#6 SAE, DUCTILE	SDC10-3S-S6S
S8S	#8 SAE, DUCTILE	SDC10-3S-S8S
3B	3/8 BSP, AL	SDC10-3S-3B
4B	1/2 BSP, AL	SDC10-3S-4B

\* Aluminum bodies are to be used for pressures less than 210 bar [3000 psi].  
\* Additional housings available