

# Motion Control Valves

## 1CEEC35

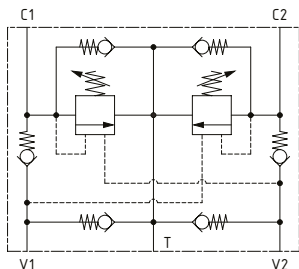
Dual Counterbalance Valve, Standard, Direct Acting with Makeup Checks

350 bar [5000 psi] • 30 l/min [8 US gpm]

### DESCRIPTION AND OPERATION

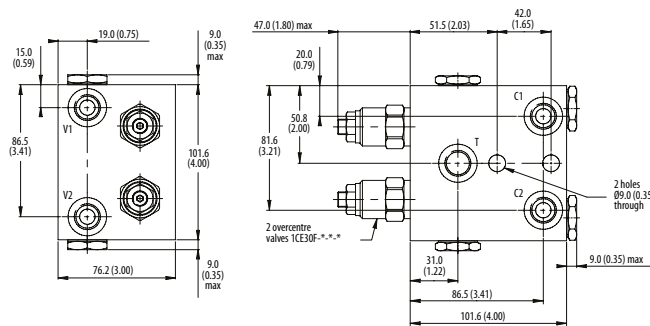
This is a dual motion control and lock valve, with make-up check valves and cross line shock and thermal relief functions built into an HIC. Flow passes through a check valve from V1 to C1 to the actuator and returns through C2 to V2 or to T. Pilot pressure raised before the check valve in line V1 to C1 pilots open the overcenter valve on the outlet of the actuator, providing load control. In the reverse direction, flow passes through a check valve from V2 to C2 to the actuator and then through C1 to V1 or to T. Pilot pressure raised before the check valve in line V2 to C2 pilots open the overcenter valve on the outlet of the actuator providing load control. Check valves between T, V1 and V2 provide anti-cavitation protection.

### SCHEMATIC



### DIMENSIONS

mm [in]

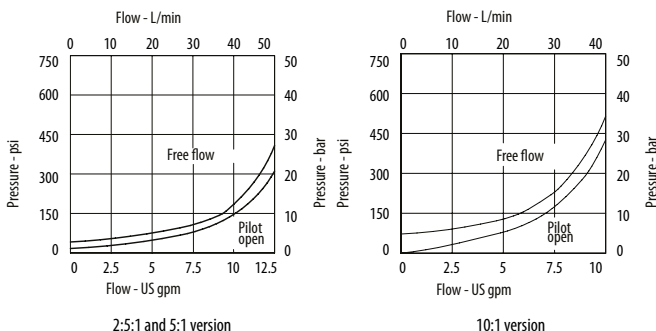


### PERFORMANCE DATA

<b>Rated pressure</b>	<b>350 bar [5000 psi]</b>
<b>Rated flow</b>	<b>30 l/min [8 US gpm]</b>
<b>Max total relief pressure</b>	350 bar [5000 psi]
<b>Max recommended load pressure at max setting</b>	270 bar [3900 psi]
<b>Pilot Ratio</b>	2.5:1, 5:1, 10:1
<b>Leakage</b>	0.3 ml/min nominal [5 drops/min]
<b>Weight</b>	2.03 kg [4.50 lb]

### PERFORMANCE CURVES

#### Pressure Drop



### MODEL CODE

**1CEEC35 - F - 3W - 35 - S - 5 - 377 - 210**

#### Adjustment Option

**F** - External  
**N** - Non-adjustable option, contact technical support

#### Housing

Code	Ports	Steel
3W	3/8" BSP	BXP16247-3WS377

#### Pressure Range

Code	Pilot Ratio 2		Pilot Ratio 5		Pilot Ratio 10	
	Bar	Psi	Bar	Psi	Bar	Psi
20	70-210	[1015-3000]	70-120	[1015-3000]	100-210	[1450-3000]
Standard setting	100	[1450]	100	[1450]	100	[1450]
35	100-350	[1450-5000]	100-350	[1450-5000]	120-350	[1740-5000]
Standard setting	210	[3000]	210	[3000]	210	[3000]

Std setting made at 4.5 l/min

#### Pressure Setting

**Code** x100 - Pressure setting in psi (10 psi increments within specified Pressure Range)  
**XXX** - Standard setting (see Pressure Range for value)  
 Example:

Code	Bar	Psi
210	210	[3000]

#### Housing Material

377 - Steel

#### Pilot Ratio

2 - 2.5:1  
 5 - 5:1  
 10 - 10:1

#### Seal Option

Code	Seal kit
S-Buna-N	SK815
SV-Viton	SK815V