

Motion Control Valves

1CEEC95

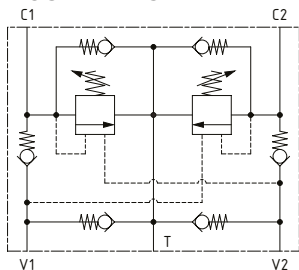
Dual Counterbalance Valve, Standard, Direct Acting with Makeup Checks

350 bar [5000 psi] • 90 l/min [24 US gpm]

DESCRIPTION AND OPERATION

This is a dual motion control and lock valve, with make-up check valves and cross line shock and thermal relief functions built into an HIC. Flow passes through a check valve from V1 to C1 to the actuator and returns through C2 to V2 or to T. Pilot pressure raised before the check valve in line V1 to C1 pilots open the overcenter valve on the outlet of the actuator, providing load control. In the reverse direction, flow passes through a check valve from V2 to C2 to the actuator and then through C1 to V1 or to T. Pilot pressure raised before the check valve in line V2 to C2 pilots open the overcenter valve on the outlet of the actuator providing load control. Check valves between T, V1 and V2 provide anti-cavitation protection.

SCHEMATIC

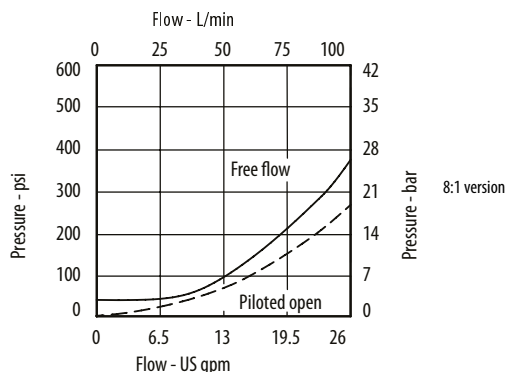
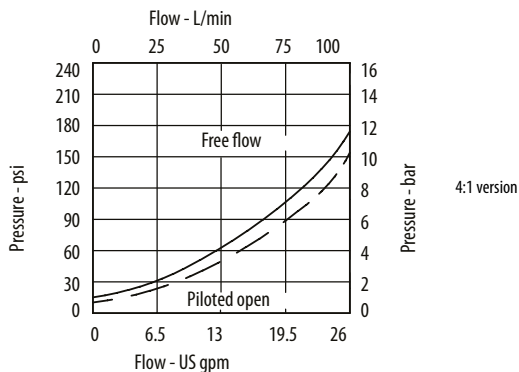


PERFORMANCE DATA

Rated pressure	350 bar [5000 psi]
Rated flow	90 l/min [24 US gpm]
Max total relief pressure	350 bar [5000 psi]
Max recommended load pressure at max setting	270 bar [3900 psi]
Pilot Ratio	4:1, 8:1
Leakage	0.3 ml/min nominal [5 drops/min]
Weight	3.70 kg [8.20 lb]

PERFORMANCE CURVES

Pressure Drop



MODEL CODE

1CEEC95 - F - 6W - 35 - S - 4 - 377 - 210

Adjustment Option

F - External
N - Non-adjustable option, contact technical support

Housing

Code	Ports	Steel
6W	3/4" BSP	BXP16248-6WS377

Pressure Range

Code	Bar	Psi
20	70-225	[1015-3260]
Standard Setting	100	[1450]
35	200-350	[2900-5000]
Standard Setting	210	[3000]

Std setting made at 4.5 L/min

Pressure Setting

Code Pressure setting in bar (10 bar increments within specified Pressure Range)
XXX - Standard setting (see Pressure Range for value)
Example:

Housing Material	Code	Bar	Psi
377 - Steel	210	210	[3000]

Pilot Ratio

4 - 4:1
8 - 8:1

Seal Option

Code	Seal kit
S-Buna-N	SK814
SV-Viton	SK814V

DIMENSIONS

mm [in]

