

Motion Control Valves

1CEEC150

Dual Counterbalance Valve, Standard, Differential Area with Makeup Checks

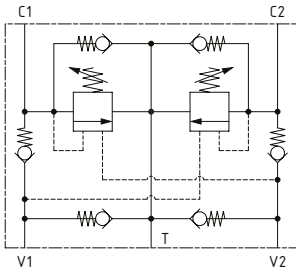
350 bar [5000 psi] • 120 l/min [32 US gpm]



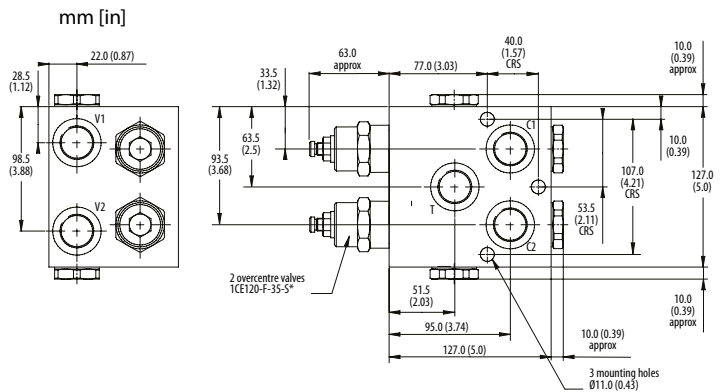
DESCRIPTION AND OPERATION

This is a dual motion control and lock valve, with make-up check valves and cross line shock and thermal relief functions built into an HIC. Flow passes through a check valve from V1 to C1 to the actuator and returns through C2 to V2 or to T. Pilot pressure raised before the check valve in line V1 to C1 pilots open the overcenter valve on the outlet of the actuator, providing load control. In the reverse direction, flow passes through a check valve from V2 to C2 to the actuator and then through C1 to V1 or to T. Pilot pressure raised before the check valve in line V2 to C2 pilots open the overcenter valve on the outlet of the actuator providing load control. Check valves between T, V1 and V2 provide anti-cavitation protection.

SCHEMATIC



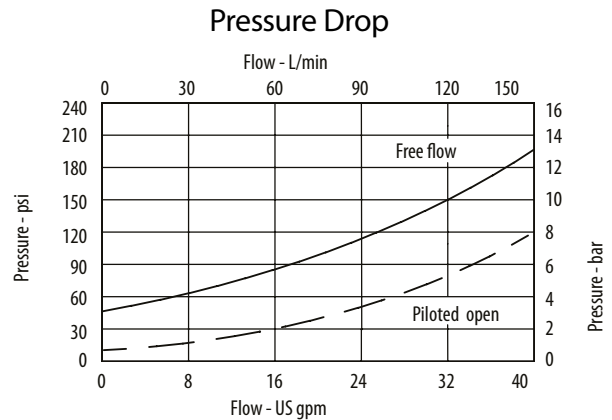
DIMENSIONS



PERFORMANCE DATA

Rated pressure	350 bar [5000 psi]
Rated flow	120 l/min [32 US gpm]
Max total relief pressure	350 bar [5000 psi]
Max recommended load pressure at max setting	270 bar [3900 psi]
Pilot Ratio	3.5:1, 8:1
Leakage	0.3 ml/min [5 drops/min]
Weight	3.70 kg [8.20 lb]

PERFORMANCE CURVES



MODEL CODE

1CEEC150 - F - 8W - 35 - S - 3 - 377 - 210

Adjustment Option

F - External

Housing

Code	Ports	Steel
8W	1" BSP Valve & Cyl Port. 1/4" BSP Brake Port	BXP15687-8WS377

Pressure Range

Code	Bar	Psi
35	70-350	[1015-5000]
Standard Setting	210	[3000]

Std setting made at 4.5 l/min

Pressure Setting

Code Pressure setting in bar (10 bar increments within specified Pressure Range)

XXX-Standard setting (see Pressure Range for value)

Example:

Code	Bar	Psi
210	210	[3000]

Housing Material

377 - Steel

Pilot Ratio

3 - 3.5:1
8 - 8:1

Seal Option

Code	Seal kit
S-Buna-N	SK813
SV-Viton	SK813V