

# Pressure Reducing Valves

## 1PA200

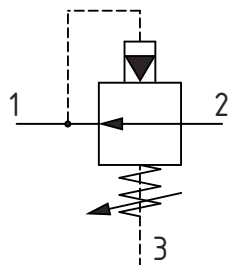
Pressure Reducing Valve, Non-Relieving, Pilot Operated

350 bar [5000 psi] • 200 l/min [52 US gpm]

### DESCRIPTION AND OPERATION

This is a normally open, pilot operated pressure reducing valve. Port 2 is open to port 1 until the setting is reached at which time the valve throttles the outlet flow limiting the pressure. Port 3 is a drain port only, as the valve does not contain a relief function. This valve, is ideal for stable and precise control of a secondary pressure within a circuit.

### SCHEMATIC



### PERFORMANCE DATA

Rated pressure	350 bar [5000 psi]
Rated flow	200 l/min [52 US gpm]
Weight	0.72 kg [1.59 lbs]
Cavity	A16102

### MODEL CODE

**1PA250 - P - 8W - 35 - S - 377 - 60**

**Basic Code**  
 1PA200 - No housing  
 1PA250 - Cartridge and Housing

**Adjustment Option**  
 P - External  
 R - Knob  
 G - Tamper Resistant

#### Housing

Code	Port Size	Housing Model Code	
		Aluminum single	Steel single
Omit	No Housing		
8W	1" BSP 1/4" BSP Drain Port	B3496	B3497
12T	3/4" SAE 1/4" BSP Drain Port	B10786	
16T	1" SAE 1/4" SAE Drain Port	B6807	B11555

\* Aluminum bodies are to be used for pressures less than 210 bar [3000 psi].  
 \* Additional housings available

#### Pressure Setting

Code - Pressure setting in bar (5 bar increments within specified Pressure Range)  
 XXX - Standard setting (see Pressure Range for value)  
 Example:

Code	Bar	Psi
60	60	[870]

#### Housing Material

Omit - Aluminum/No housing  
 377 - Steel

#### Seal Option

Code	Seal Kit
S - Buna-N	SK173
SV - Viton®	SK173V

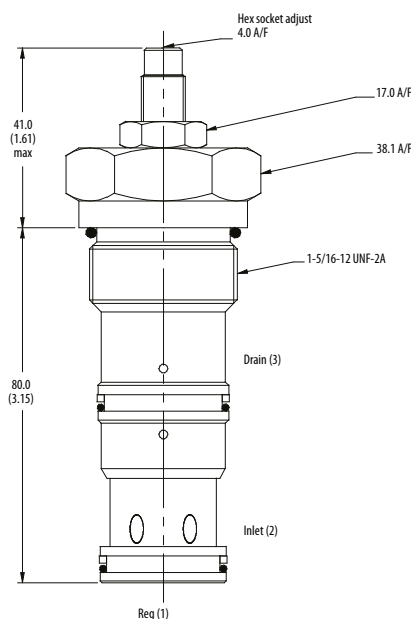
#### Pressure Range

Code	Bar	Psi
20	10-210	[145-3000]
Standard Setting	100	[1450]
35	30-350	[435-5000]
Standard Setting	280	[4060]

Pressure setting made at zero flow (dead head)

### DIMENSIONS

mm [in]



Installation torque  
 100 Nm [76 ft. lbs]

### PERFORMANCE CURVES

#### Pressure Override

