

Pressure Reducing Valves

PRV1-10

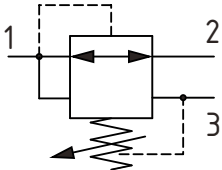
Pressure Reducing Valve, Relieving, Direct Acting

210 bar [3000 psi] • 15 l/min [4 US gpm]

DESCRIPTION AND OPERATION

This is a normally open, direct acting pressure reducing valve. Port 2 is open to port 1 until the setting is reached. at which time the valve throttles the outlet flow limiting the pressure at port 1. If the outlet pressure rises due to an external force, then the valve will open port 1 to port 3 acting as a relief valve. This valve is ideal for use in brake circuits where low leakage is important.

SCHEMATIC



PERFORMANCE DATA

Rated pressure	210 bar [3000 psi]
Rated flow	15 l/min [4 US gpm]
Weight	0.24 kg [0.54 lbs]
Cavity	SDC10-3

MODEL CODE

PRV1 - 10 - V - C - 3B - 12 - 10

Seal Option

Code	Seal Kit
Omit - Buna -N	565804
V - Viton	889599

Adjustment Option

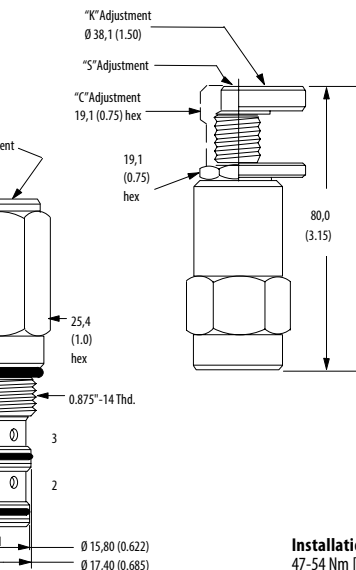
- C - Tamper Resistant
- F - Fixed
- I - Internal
- K - Knob
- S - External

Housing

Code	Port Size	Housing Model Code	
		Aluminum standard duty	Aluminum heavy duty
0	No Housing		
3B	3/8" BSP	02-173358	-
6T	#6 SAE	566162	-
2G	1/4" BSP	-	876705
3G	3/8" BSP	-	876714
6H	#6 SAE	-	876704
8H	#8 SAE	-	876711

* Aluminum bodies are to be used for pressures less than 210 bar [3000 psi].

* Additional housings available



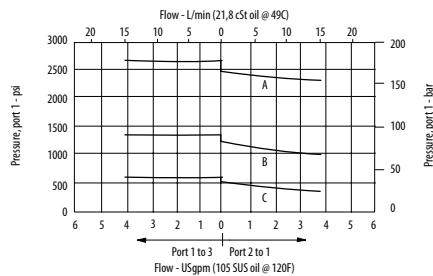
DIMENSIONS

mm [in]

Installation torque
47-54 Nm [35-40 ft. lbs]

PERFORMANCE CURVES

Pressure Override



A - 24 spring • B - 12 spring • C - 6 spring

Pressure Setting

Code x100 - Pressure setting in psi (50 psi increments within specified Pressure Setting)
XXX-Standard setting (see Pressure Setting for value)
Example:

Code	Bar	Psi
10	69	[1000]

Pressure Range

Code	Bar	Psi
2	3.5-14	[50-200]
Standard Setting	7	[100]
6	7-41	[100-600]
Standard Setting	21	[300]
12	14-83	[200-1200]
Standard Setting	41	[600]
24	28-165	[400-2400]
Standard Setting	83	[1200]