

Pressure Reducing Valves

PRV2-16

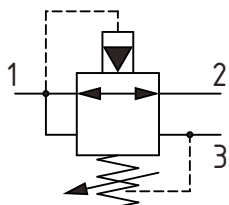
Pressure Reducing Valve, Relieving, Pilot Operated

350 bar [5000 psi] • 150 l/min [40 US gpm]

DESCRIPTION AND OPERATION

This is a normally open, pilot operated pressure reducing valve. Port 2 is open to port 1 until the setting is reached, at which time the valve throttles the outlet flow limiting the pressure. If the outlet pressure rises due to an external force, then the valve will open port 1 to port 3 acting as a relief valve. This valve is ideal for stable and precise control of a secondary pressure within a circuit.

SCHEMATIC



PERFORMANCE DATA

| | |
|-----------------------|------------------------------|
| Rated pressure | 350 bar [5000 psi] |
| Rated flow | 150 l/min [40 US gpm] |
| Weight | 0.40 kg [0.89 lbs] |
| Cavity | SDC16-3 |

MODEL CODE

PRV2 - 16 - V - C - S - 6B - 30 - 10

Seal Option

Code Seal Kit

Omit-Buna -N 565811

V-Viton 889610

Adjustment Option

C - Tamper Resistant

K - Knob

S - External

Housing Material

Omit- No housing

A - Aluminum

S - Steel

Housing

| Code | Ports | Housing Model Code | | |
|------|------------|------------------------|---------------------|------------------|
| | | Aluminum standard duty | Aluminum heavy duty | Steel heavy duty |
| 0 | No Housing | | | |
| 6B | 3/4" BSP | 02-175465 | - | - |
| 4G | 1/2" BSP | - | 876720 | 02-175131 |
| 6G | 3/4" BSP | - | 876722 | 02-175132 |
| 10H | #10 SAE | - | 876721 | - |
| 12H | #12 SAE | - | 876723 | - |
| 10T | #10 SAE | - | - | 02-175129 |
| 12T | #12 SAE | 566152 | - | 02-175130 |

* Aluminum bodies are to be used for pressures less than 210 bar [3000 psi].

* Additional housings available

Pressure Setting

Code x100 - Pressure setting in psi (50 psi increments within specified Pressure Setting)

XXX-Standard setting (see Pressure Setting for value)

Example:

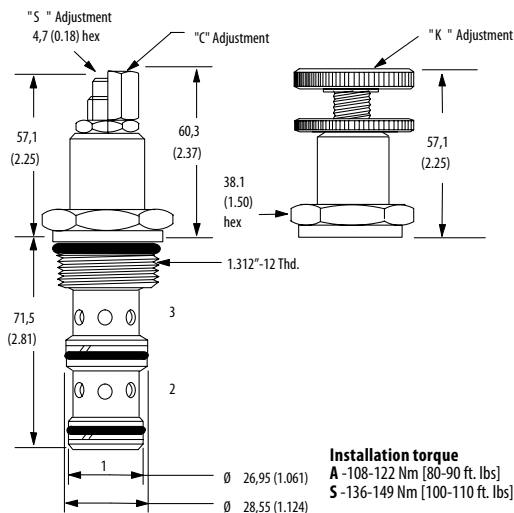
| Code | Bar | Psi |
|------|------|--------|
| 10 | 69 | [1000] |
| 10.5 | 72.4 | [1050] |

Pressure Range

| Code | Bar | Psi |
|------------------|--------|-------------|
| 30 | 34-210 | [500-3000] |
| Standard Setting | 103 | [1500] |
| 60 | 70-350 | [1000-5000] |
| Standard Setting | 210 | [3000] |

DIMENSIONS

mm [in]



Installation torque

A -108-122 Nm [80-90 ft. lbs]

S -136-149 Nm [100-110 ft. lbs]

PERFORMANCE CURVES

Pressure Override

