

Pressure Reducing Valves

PRV12-12

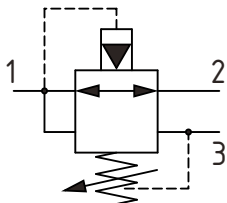
Pressure Reducing Valve, Relieving, Pilot Operated

350 bar [5000 psi] • 114 l/min [30 US gpm]

DESCRIPTION AND OPERATION

This is a normally open, pilot operated pressure reducing valve. Port 2 is open to port 1 until the setting is reached, at which time the valve throttles the outlet flow limiting the pressure. If the outlet pressure rises due to an external force, then the valve will open port 1 to port 3 acting as a relief valve. This valve is ideal for stable and precise control of a secondary pressure within a circuit.

SCHEMATIC

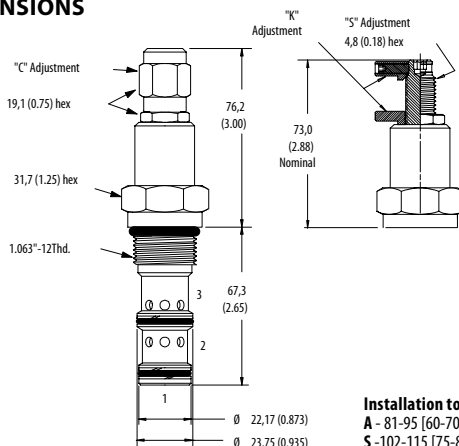


PERFORMANCE DATA

Rated pressure	350 bar [5000 psi]
Rated flow	114 l/min [30 US gpm]
Weight	0.4 kg [0.89 lbs]
Cavity	C-12-3

DIMENSIONS

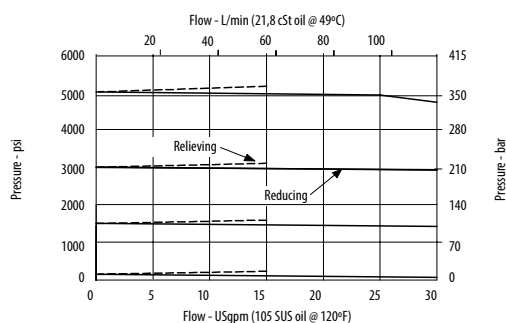
mm [in]



Installation torque
A - 81-95 [60-70 ft. lbs]
S - 102-115 [75-85 ft. lbs]

PERFORMANCE CURVES

Pressure Override



MODEL CODE

PRV12 - 12 - V - S - S - 10T - 15 - 10

Seal Option

Code	Seal Kit
Omit-Buna-N	02-165872
V-Viton	02-165886

Adjustment Option

S - External
 C - Tamper Resistant
 K - Knob

Housing Material

Omit - No housing
 A - Aluminum
 S - Steel

Housing

Code	Ports	Housing Model Code	
		Aluminum heavy duty	Steel heavy duty
0	No Housing		
10T	#10 SAE	02-160642	02-161070
12T	#12 SAE	02-160646	02-169816
4G	1/2" BSP	02-161817	02-169815
6G	3/4" BSP	02-161816	02-169814

* Aluminum bodies are to be used for pressures less than 210 bar [3000 psi].
 * Additional housings available

Pressure Setting

Code x100 - Pressure setting in psi (50 psi increments within specified Pressure Range)
 XXX - Standard setting (see Pressure Range for value)
 Example:

Code	Bar	Psi
10	69	[1000]

Pressure Range

Code	Bar	Psi
15	10.3-103	[150-1500]
Standard Setting	52	[750]
30	17-210	[250-3000]
Standard Setting	103	[1500]
50	24-350	[350-5000]
Standard Setting	172	[2500]