

# Pressure Reducing Valves

## CP230-2

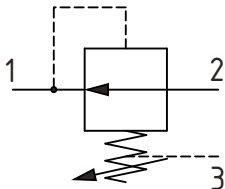
Pressure Reducing Valve, Non-Relieving, Direct Acting

210 bar [3000 psi] • 40 l/min [11 US gpm]

### DESCRIPTION AND OPERATION

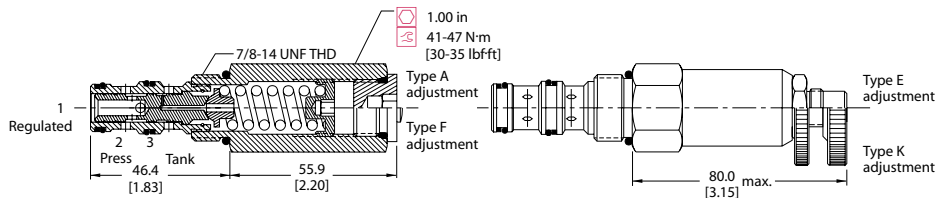
This is a normally open, direct acting pressure reducing valve. Port 2 is open to port 1 until the setting is reached at which time the valve throttles the outlet flow limiting the pressure. Port 3 is a drain port only, as the valve does not contain a relief function. This valve, is ideal for stable and precise control of a secondary pressure within a circuit.

### SCHEMATIC



### DIMENSIONS

mm [in]

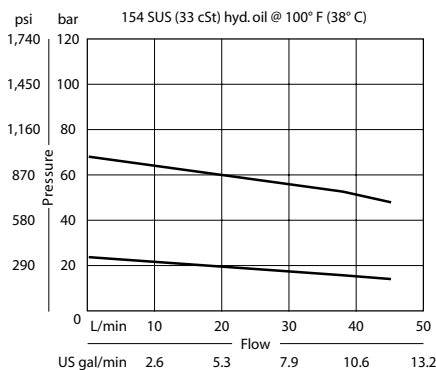


### PERFORMANCE DATA

Rated pressure	210 bar [3000 psi]
Rated flow @ 7 bar [100 psi]	40 l/min [11 US gpm]
Weight	0.25 kg [0.56 lb]
Cavity	SDC10-3

### PERFORMANCE CURVES

#### Pressure Override



### MODEL CODE

**CP230 - 2 - B - 6S - A - C - 075**

#### Seal Option

Code	Seal Kit
B-Buna -N	120027
V -Viton	120028

#### Housing

Code	Ports & Material	Housing Model Code
00	No Housing	No Housing
SE3B	Al. 3/8 BSP	SDC10-3-SE-3B
SE4B	Al. 1/2 BSP	SDC10-3-SE-4B
6S	Al. #6 SAE	CP10-3-6S
8S	Al. #8 SAE	CP10-3-8S

#### Adjustment Option

A - Internal  
E - External  
F - Tamper resistant  
K - Knob

#### Pressure Setting

Code x10 - Pressure setting in psi (10 psi increments within specified Pressure Range)  
XXX - Standard setting (see Pressure Range for value)

Example:

Code	Bar	Psi
075	52	[750]

#### Pressure Range

Code	Bar	[psi]
A	4-28	[50-400]
Standard Setting	17	[250]
B	5-55	[75-800]
Standard Setting	28	[400]
C	7-97	[100-1400]
Standard Setting	69	[1000]
D	34-166	[500-2400]
Standard Setting	103	[1500]

\* Aluminum bodies are to be used for pressures less than 210 bar [3000 psi].

\* Additional housings available