

Pressure Reducing Valves

PRC 06

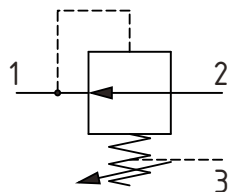
Pressure Reducing Valve, Non-Relieving, Direct Acting

315 bar [4600 psi] • 40 l/min [11 US gpm]

DESCRIPTION AND OPERATION

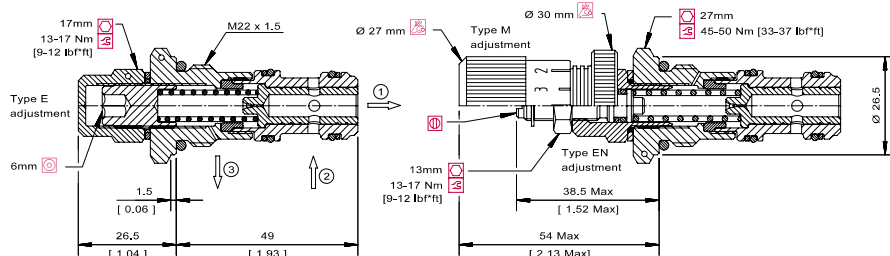
This is a normally open, direct acting pressure reducing valve. Port 2 is open to port 1 until the setting is reached at which time the valve throttles the outlet flow limiting the pressure. Port 3 is a drain port only, as the valve does not contain a relief function. This valve, is ideal for stable and precise control of a secondary pressure within a circuit.

SCHEMATIC



DIMENSIONS

mm [in]



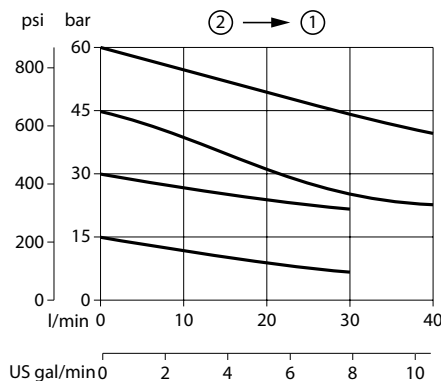
PERFORMANCE DATA

Rated pressure	315 bar [4600 psi]
Rated flow @ 7 bar [100 psi]	40 l/min [11 US gpm]
Weight	0.14 kg [0.31 lb]
Cavity	NCS 06/3

PERFORMANCE CURVES

Pressure Override

Reduced pressure



MODEL CODE

PRC 06 - EN - 2 - 00 - V - 60

Adjustment Option

E - Internal
EN - External
M - Calibrated Knob

Pressure Range

Code	Bar	Psi
5	1-10	[14.5-145]
Standard Setting	Not set	
1.5	10 - 25	[145-360]
Standard Setting	Not set	
2	25-80	[360-1150]
Standard Setting	Not set	

Pressure Setting

Code-Pressure setting in bar (5 bar increments within specified Pressure Range)
XXX-Standard setting (see Pressure Range for value)
Example:

Seal Option

Code	Seal Kit
Omit - Buna -N	230000070
Viton	230000110

Code	Bar	Psi
60	60	[870]

Housing

Code	Ports & Material	Housing Model Code
00	No Housing	No Housing
SE3/8	Al. 3/8 BSP	NCS06/3-SE-3/8
SE1/2	Al. 1/2 BSP	NCS06/3-SE-1/2
SE6S	Al. #6 SAE	NCS06/3-SE-6S
SE8S	Al. #8 SAE	NCS06/3-SE-8S

* Aluminum bodies are to be used for pressures less than 210 bar [3000 psi].

* Additional housings available