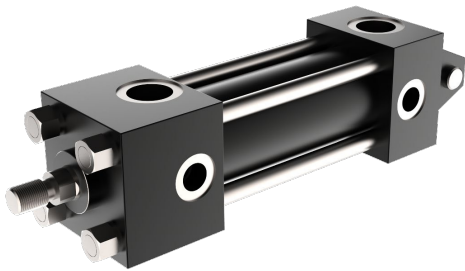


## User Guide

# Online Cylinder CAD Configurator

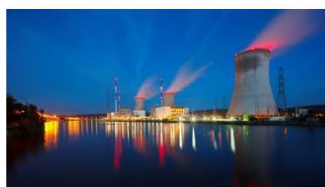


# Danfoss Cylinder Products and Markets

Type	Description	Product
Tie Rod	Heavy Duty NFPA	N5, NZ
	Heavy Duty Large Bore	HG, VG
	Heavy Duty ISO 6020-2 / Din 25554	IHM, TV
	Medium Duty NFPA	R5, RE
	Light Duty Pneumatics	VP/Q6, L
Threaded	Threaded Construction	TS, TA
Welded	Industrial Welded	HW, WH
Mill	Mill Duty	EM, IM
SL	Extra Large Customs	XL Custom

Bore Size: up to 60"  
Stroke: up to 20 meters

Pressure: up to 660 bar  
Metric and Imperial designs



# Online CAD Configurator User Guide

Our easy-to-use, mobile-friendly cylinder configurator provides on-demand access to:

- 2D & 3D drawings
- PDF datasheets
- Application guides
- Calculation tools

Activation is needed for pricing after approval of request.

Hi,

Thank you for the RFQ!

Also, do you have an account for the online CAD configurator? It is easy, fast and convenient! Please create an account and you will receive a 35% discount on your orders! Here is the link where you can get quotes and pricing online.

**[Cylinder CAD Configurator | Danfoss PowerSource \(eatonpowersource.com\)](https://eatonpowersource.com)**

***Quoted lead times provided are general guidance. Lead times will be confirmed upon receipt of order and are subject to change based on material availability.***

# Table of Contents

- Registration and Login- Pg. 5
- Standard parts quoting- Pg. 9
- Online Configurator – Ordering Pg. 13
- Online CAD Configurator User Guide- Custom Cylinders- Pg. 16
- How to Export Data Sheets and Models- Pg. 19

# Registration & Login

**Danfoss** POWERSOURCE®

Wish List | Batch Search

All | Enter Part Number, Model Code, Description, etc. | Search

Products | Markets | Tools | Where to Buy

## Cylinder CAD Configurator

Configure a cylinder and request a quote from anywhere in the world. Danfoss' cylinder configurator allows users to design a cylinder, create model codes, download CAD drawings and request pricing for Hydro-Line and Vickers by Danfoss industrial cylinder products, including tie rod, mill duty, threaded and electrohydraulic cylinders. Product models are available in more than 150 CAD and graphic formats. Click on a configurator [below](#) and then login to get started!

Our easy-to-use, mobile-friendly cylinder configurator provides on-demand access to:

- 2D & 3D drawings
- PDF datasheets
- Application guides
- Calculation tools

Create an account and log in for full functionality.

### Downloads

[Online CAD configurator user guide](#)

### GET STARTED BY CLICKING A CYLINDER SERIES BELOW, OR REVIEW THE CONFIGURATOR USER GUIDE FOR A TUTORIAL

HEAVY-DUTY TIE ROD NFPA CYLINDERS	MEDIUM-DUTY TIE-ROD NFPA CYLINDERS	ELECTROHYDRAULIC TIE-ROD CYLINDERS
<a href="#">Hydro-Line N5 series</a> <a href="#">Catalog</a>	<a href="#">Hydro-Line R5/HR5 series</a> <a href="#">Catalog</a>	<a href="#">Danfoss EH series</a> <a href="#">Catalog</a>
<a href="#">Hydro-Line HG series</a> <a href="#">Catalog</a>	<a href="#">Vickers by Danfoss RE/RF series</a> <a href="#">Catalog</a>	
<a href="#">Vickers by Danfoss NZ series</a> <a href="#">Catalog</a>		
<a href="#">Vickers by Danfoss VG series</a> <a href="#">Catalog</a>		

The above image is what you will see when clicking the link, select any of the series of cylinders in red and it will take you to a registration form.

# Registration & Login

Configure & CAD   **New Account**   **Login**

**Part Number Configurator**

Search by PN  **Find Cylinder**

Part No. TA01EABA1AA00100

Series Air

Bore 2-1/2 Inch

Mounting Style 01 Foot

Rod Size 0.750 Inch

Cushion Position (Rod End) 0

Cushion Position (Blind End) 0

Rod End Type B Standard Male Thread

Rod End Style (Cap) N/A

Piston Seal Type

Info	Preview
TA	Brand: Vickers by Danfoss
01	Series: Spacemaker Air
E	Mounting style: Foot
A	Bore: 2 1/2"
B	Cushions: Rod end: - Blind end: -
A	Rod end: Rod diameter: 3/4" Type end: 4
1	Seals: Type: U Cup Material: Nitrile (Buna-N)
A	Port size: NPT
001	Port location: Rod end: 1 Blind end: 1
00	Limit switch: None
	Stroke: 0-1/16"
	Extra Rod Projection: 0"

Request quote for pricing

Configure a cylinder and request a quote from anywhere in the world.

1. If this is the first time visiting the CAD configurator you must set up a new account.
2. If you have account already select the Login button.

Configure & CAD   New Account   **Login**

**Account Login**  
Revised 10/07/2022

Please enter your Email Address:

Do you already have an account?

☐ Yes, my password is:  Remember me? ☒

☐ Yes, but I forgot my password

☒ No, please sign me up as a new user

**Create new account**

# Registration & Login

New Account

By filling out the form below, I understand and agree that any use of my personal data will take place in compliance with the relevant and applicable data privacy laws and the [Danfoss Privacy Policy](#).

\* Company Name

\* First/Last Name

Address

\* City

\* State

\* ZIP Code

\* Country

\* Email

Auto login? ☐ (Automatic access if last successful login was from the same browser on the same desktop)

\* Password (6-20 characters)  (Show) (Create random password)

\* Confirm password  (Show)

CAD format

☐ Opt-in to Cylinders Marketing I agree to be informed regularly about Danfoss products, promotions and news. I understand and agree that Danfoss will use my data to personalize marketing communications. Any use of my personal data will take place in compliance with the relevant and applicable data privacy laws and the [Danfoss Privacy Policy](#). I can withdraw my consent to receive marketing communications at any time by contacting Danfoss.

\* ☐ CADENAS CAD Terms and Conditions I agree to [CADENAS CAD Terms and Conditions](#). I hereby consent to the processing (collection, storage and use) of my personal data according to the data protection declaration and the data protection notice made known to me. I have read the terms of use of the PARTcommunity forum and hereby also declare my consent.

\*Indicates mandatory fields

[Create Account](#)

Fill out the required information. Pricing access will not be granted to personal email accounts.

Note: If you are just signing up or do not have access to pricing, you must send an email to your Customer Support Representative (CSR) to gain pricing access.

Please refer to the Login instructions following registration.



## Part Number Configurator

Search by PN  [Find Cylinder](#)

Part No.

Series

Bore  Inch

Info

Preview

Brand	Industrial Welded Cylinders	Request quote for pricing
Series	Cap Clevis Mount	
Bore & Rod Diameter	3-1/4" Bore, 1-3/8" Rod	
End End Type	Small Male UN Thread	



# Registration & Login

## Vickers by Danfoss WH Series Cylinder Configurator

[Configure & CAD](#)[New Account](#)[Login](#)

**Account Login**  
*Revised 10/07/2022*

Please enter your Email Address:

Do you already have an account?

☒ Yes, my password is:  Remember me? ☒

☐ Yes, but I forgot my password

☐ No, please sign me up as a new user

1. After initial Login during registration you will need to use the Login button shown to start the process of quoting.

2. Enter your email

3. Enter your password

4. Select the Login button.



# Online CAD Configurator User Guide- Standard Cylinder or Parts

[Configure & CAD](#)[Pricing & Lead Time](#)[My Account](#)[Logoff](#)

## Pricing & Lead Time

SKU

Quantity

This page is the beginning to what ever you are starting to quote. If you have a standard cylinder you can go to the Pricing & Lead Time. The below screen is what you will see.

[Configure & CAD](#)[Pricing & Lead Time](#)[My Account](#)[Logoff](#)

## Pricing & Lead Time

SKU

Quantity

# Online CAD Configurator User Guide- Standard Cylinder or Parts

## Pricing & Lead Time

Enter

Price & Leadtime

Cart View

SKU

RF10GE5N1KA10000

Quantity

1

Enter

1. There are several options for the information that can go into the box. Standard part numbers that do not have an "X" in the part number, some Design Codes you will be able to quote along with Accessories.
2. The discount will auto populate when you select the "Enter" button.
3. Select the Enter button.

## Pricing & Lead Time

Enter

Price & Leadtime

Cart View

RF

10

GE

5

N

1

K

A

100

Brand

Series

Mounting

Bore & Rod Diameter

Rod End Type

Seal Options

Port Options

Port Location

Cushion Location

Cylinder Stroke

Vickers by Danfoss

1500 PSI Medium Duty Hydraulic

Cap Fixed Clevis

3-1/4" Bore, 1" Rod

Small male UN Thread

Normal

NPTF

Head: 1 Cap: 1

Head: - Cap: -

10"

**Price Components**

Base Price

Stroke

(10" Gross Stroke @ \$17.60)

**List Price**

Less 35.00% Discount

**Net Price**

\$713.00

\$176.00

**\$889.00**

**\$311.15**

**\$577.85**

Normally ships in 5 business day(s)

Discount shown will only apply if the order is completed online or the quote is saved through the configurator. Standard discount to be applied otherwise.

Comment:

Optional comment or instructions

Add to Cart

# Online CAD Configurator User Guide- Standard Cylinder or Parts

## Pricing & Lead Time

Enter

Price & Leadtime

Cart View

4

RF

10

GE

5

N

1

K

A

100

Brand

Series

Mounting

Bore & Rod Diameter

Rod End Type

Seal Options

Port Options

Port Location

Cushion Location

Cylinder Stroke

Vickers by Danfoss

1500 PSI Medium Duty Hydraulic

Cap Fixed Clevis

3-1/4" Bore, 1" Rod

Small male UN Thread

Normal

NPTF

Head: 1 Cap: 1

Head: - Cap: -

10"

Region: North America

Price Components

Base Price

Stroke

(10" Gross Stroke @ \$17.60)

List Price

Less 35.00% Discount

Net Price

\$713.00

\$176.00

\$889.00

\$311.15

\$577.85

Normally ships in 5 business day(s)

Discount shown will only apply if the order is completed online or the quote is saved through the configurator. Standard discount to be applied otherwise.

Comment:

Optional comment or instructions

Add to Cart

3

1. The first part of the quote will give you the information you entered for the cylinder. You can go back to the Enter button to make changes to the cylinder part number. A catalog with information regarding each selection on the cylinder part number is located on slide 5.
2. The second section is a breakdown of the prices associated with the cylinder.
3. The final section allows you to add the cylinder to your cart for check out. More on ordering in later slides.
4. The cart view gives you more of a direct look at the information you selected.

# Online CAD Configurator User Guide- Standard Cylinder or Parts

## Pricing & Lead Time

Enter

Price & Leadtime

Cart View

Part #/Description	Quantity	List Price	Discount%	Net Price
<b>RF10GE5N1KA10000</b> (Get CAD) <ul style="list-style-type: none"><li>Brand: Vickers by Danfoss</li><li>Series: 1500 PSI Medium Duty Hydraulic</li><li>Mounting: Cap Fixed Clevis</li><li>Bore &amp; Rod Diameter: 3-1/4" Bore, 1" Rod</li><li>Rod End Type: Small male UN Thread</li><li>Seal Options: Normal</li><li>Port Options: NPTF</li><li>Port Location: Head: 1 Cap: 1</li><li>Cushion Location: Head: - Cap: -</li><li>Cylinder Stroke: 10"</li></ul> Normally ships in 5 business day(s)	1	\$889.00	35.00%	\$577.85

Discount shown will only apply if the order is completed online or the quote is saved through the configurator. Standard discount to be applied otherwise.

## Pricing & Lead Time

Enter

Price & Leadtime

Cart View

RF

10

GE

5

N

1

K

A

100

Brand

Series

Mounting

Bore & Rod Diameter

Rod End Type

Seal Options

Port Options

Port Location

Cushion Location

Cylinder Stroke

Vickers by Danfoss

1500 PSI Medium Duty Hydraulic

Cap Fixed Clevis

3-1/4" Bore, 1" Rod

Small male UN Thread

Normal

NPTF

Head: 1 Cap: 1

Head: - Cap: -

10"

Region: North America

Price Components

Base Price

Stroke

(10" Gross Stroke @ \$17.60)

List Price

Less 35.00% Discount

Net Price

\$713.00

\$176.00

\$889.00

\$311.15

\$577.85

Normally ships in 5 business day(s)

Discount shown will only apply if the order is completed online or the quote is saved through the configurator. Standard discount to be applied otherwise.

Comment:

Optional comment or instructions

Add to Cart

When you are ready to add to the cart you will hit the “Add to Cart”.

# Online CAD Configurator- Ordering

An embedded page at danfoss.scscpq.com says

Add RF10GE5N1KA10000 to cart?

OK

Cancel

Next you would either Update Cart or Remove from Cart

Pricing & Lead Time

EnterPrice & LeadtimeCart View

RF

10

GE

S

N

1

K

A

100

Brand

Series

Mounting

Bore & Rod Diameter

Rod End Type

Seal Options

Port Options

Port Location

Cushion Location

Cylinder Stroke

Vickers by Danfoss

1500 PSI Medium Duty Hydraulic

Cap Fixed Clevis

3-1/4" Bore, 1" Rod

Small male UN Thread

Normal

NPTF

Head: 1 Cap: 1

Head: - Cap: -

10"

Region: North America

Price Components

Base Price

\$713.00

Stroke

\$176.00

(10" Gross Stroke @ \$17.60)

List Price

\$889.00

Less 35.00% Discount

\$311.15

Net Price

\$577.85

Normally ships in 5 business day(s)

Discount shown will only apply if the order is completed online or the quote is saved through the configurator. Standard discount to be applied otherwise.

Comment:

Optional comment or instructions

Update Cart

Remove from Cart

Added RF10GE5N1KA10000

An embedded page at danfoss.scscpq.com says

Remove RF10GE5N1KA10000 from cart?

OK

Cancel

© 2023 Danfoss. All Rights Reserved

# Online CAD Configurator- Ordering

[Configure & CAD](#)[Dashboard](#)[My Account](#)[RFQ/Order Cart \(1\)](#)[Logoff](#)

## Shopping Cart

Del?	Line#	Part #/Description	Quantity	List Price	Discount%	Net Price
<input type="checkbox"/>	1	<b>RF10GE5N1KA10000</b> <a href="#">(Get CAD)</a> <ul style="list-style-type: none"><li>• Brand: Vickers by Danfoss</li><li>• Series: 1500 PSI Medium Duty Hydraulic</li><li>• Mounting: Cap Fixed Clevis</li><li>• Bore &amp; Rod Diameter: 3-1/4" Bore, 1" Rod</li><li>• Rod End Type: Small male UN Thread</li><li>• Seal Options: Normal</li><li>• Port Options: NPTF</li><li>• Port Location: Head: 1 Cap: 1</li><li>• Cushion Location: Head: - Cap: -</li><li>• Cylinder Stroke: 10"</li></ul> Normally ships in 5 business day(s) Comment: <input type="text" value="Optional comment or instructions"/>	<input type="text" value="1"/>	\$889.00	35.00%	\$577.85

Discount shown will only apply if the order is completed online or the quote is saved through the configurator. Standard discount to be applied otherwise.

[Update Cart](#)[Check Out](#)[Clear Cart](#)**1****3****2**

1. The Update Cart will allow you to change your order.
2. The Clear Cart will empty the cart and you can start over.
3. The check out button will take you to a check out section that you will need to fill out.

# Online CAD Configurator- Ordering



<https://danfoss.com>

## Sold To

Company Name Danfoss  
Name Dean Sieler  
Address 1  
City Jackson  
State/Province Michigan  
Zip/Postal Code 49202  
Country United States  
Email dean.sielers@danfoss.com

## Ship To

\*Company Name Danfoss  
\*Name Dean Sieler  
\*Address 1  
\*City Jackson  
\*State Michigan  
\*ZIP Code 49202  
\*Country United States

\*Indicates mandatory fields

Type	PO#	Ship Via	Comment			
<input type="text"/>	<input type="text"/>	<input type="text"/>	<input type="text"/>			
3	4	5	6			
Line#	Part #/Description	Quantity	List Price	Discount%	Net Price	
1	<b>RF10GE5N1KA10000</b> ( <a href="#">Get CAD</a> ) <ul style="list-style-type: none"><li>Brand: Vickers by Danfoss</li><li>Series: 1500 PSI Medium Duty Hydraulic</li><li>Mounting: Cap Fixed Clevis</li><li>Bore &amp; Rod Diameter: 3-1/4" Bore, 1" Rod</li><li>Rod End Type: Small male UN Thread</li><li>Seal Options: Normal</li><li>Port Options: NPTF</li><li>Port Location: Head: 1 Cap: 1</li><li>Cushion Location: Head: - Cap: -</li><li>Cylinder Stroke: 10"</li></ul> Normally ships in 5 business day(s)	1	\$889.00	35.00%	\$577.85	

Discount shown will only apply if the order is completed online or the quote is saved through the configurator. Standard discount to be applied otherwise.

[Review >>](#)

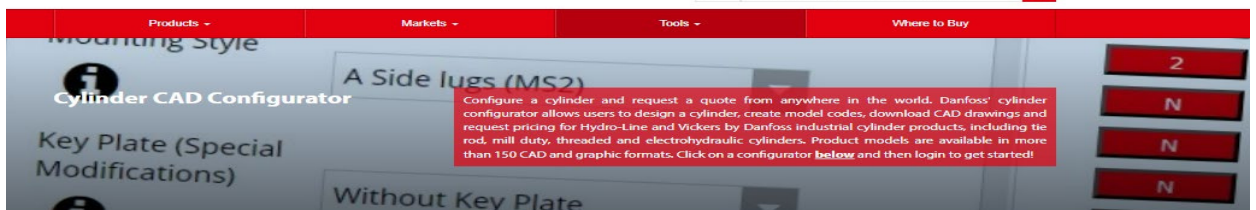
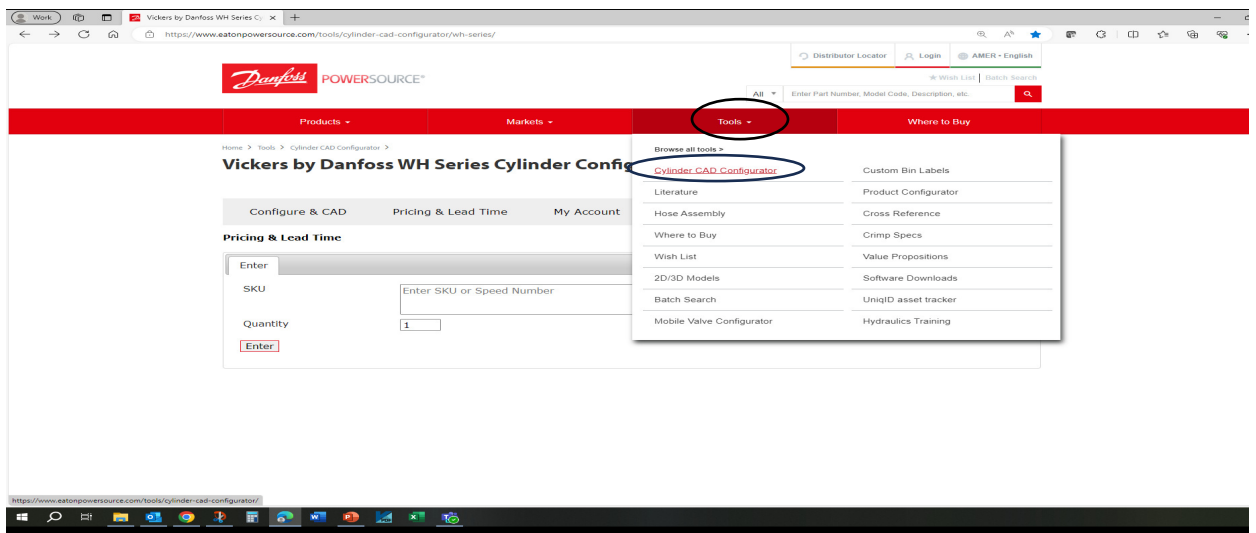
7

1. First section make sure the Sold to information is correct.
2. Ship to information complete.
3. Select type "Quote or Order".
4. PO # added.
5. The shipping company you want to use.
6. Any comments you want to add to the order.
7. Review order and select Complete if everything is correct.



# Online CAD Configurator User Guide- Custom Cylinders

You can build a cylinder with the options you want by hovering over the tools tab, move cursor down to the Cylinder CAD Configurator tab. Scroll down to the series you are looking to build.



Our easy-to-use, mobile-friendly cylinder configurator provides on-demand access to:

- 2D & 3D drawings
- PDF datasheets
- Application guides
- Calculation tools

Create an account and log in for full functionality.

## Downloads

[Online CAD configurator user guide](#)

**GET STARTED BY CLICKING A CYLINDER SERIES BELOW, OR REVIEW THE CONFIGURATOR USER GUIDE FOR A TUTORIAL**

### HEAVY-DUTY TIE ROD NFPA CYLINDERS

[Hydro-Line NS series](#) [\(Catalog\)](#)

[Hydro-Line HG series](#) [\(Catalog\)](#)

[Vickers by Danfoss NZ series](#) [\(Catalog\)](#)

[Vickers by Danfoss VG series](#) [\(Catalog\)](#)

### MEDIUM-DUTY TIE-ROD NFPA CYLINDERS

[Hydro-Line RS/HR5 series](#) [\(Catalog\)](#)

[Vickers by Danfoss RE/RF series](#) [\(Catalog\)](#)

### ELECTROHYDRAULIC TIE-ROD CYLINDERS

[Danfoss EH series](#) [\(Catalog\)](#)

### THREADED CYLINDERS

[Hydro-Line TS/HTS series](#) [\(Catalog\)](#)

[Vickers by Danfoss TA/TB series](#)

### MILL-DUTY CYLINDERS

[Danfoss Imperial EM series](#) [\(Catalog\)](#)

[Danfoss IM Series](#) [\(Catalog\)](#)

### WELDED CYLINDERS

[Danfoss WH Series](#) [\(Catalog\)](#)

# Online CAD Configurator User Guide- Custom Cylinders

## Part Number Configurator

Search by PN  **1** [Find Cylinder](#)

Part No.

Model Series

Series

Mounting Style  **4**

Bore  Inch

Working Stroke  180  
 Inch

Minimum Stroke Limitations

Stroke Warning

Rod Position

Rod Position Stroke

Extra Rod Projection  9

Info CAD & Preview Calculations Calculations Help


Brand	Vickers by Danfoss	Price Components
RE Series	250 PSI Pneumatic Cylinders	Base Price \$713.00
01 Mounting	Side Lug	Stroke \$17.60
GE Bore & Rod Diameter	3-1/4" Bore, 1" Rod	(1" Gross Stroke @ \$17.60)
5 Rod End Type	Small male UN Thread	<b>List Price \$730.60</b>
N Seal Options	Normal	Normally ships in 5 business day(s)
I Port Options	NPTF	Comment:
K Port Location	Head: 1 Cap: 1	Optional comment or instructions
A Cushion Location	Head: - Cap: -	
001 Cylinder Stroke	0-1/16"	<a href="#">Add to Cart</a> <b>3</b>

Mounting Style

RE01GE5N1KA00100

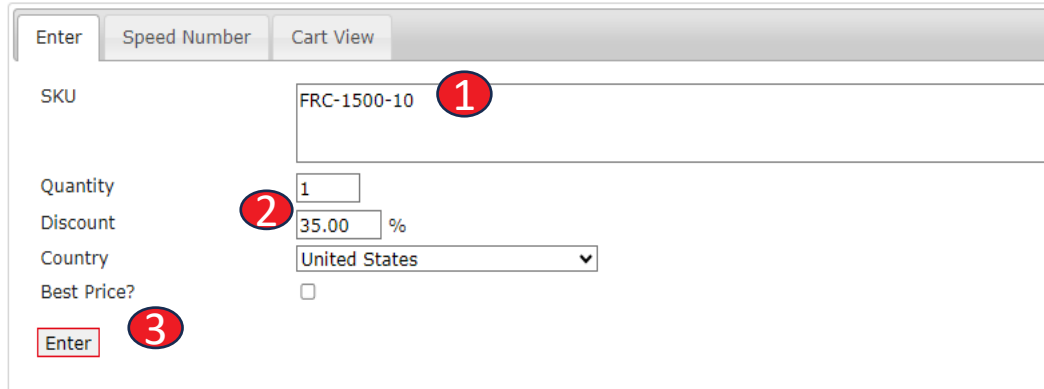
Side Lug Mount (MS2)

WARNING: This product is intended for use in applications where the user is responsible for the proper installation and use of the product. The user must read and understand the instructions and warnings provided in the product manual and follow them carefully. The user must also ensure that the product is used in accordance with the applicable safety standards and regulations.

1. You can put the part number in the search box and select the "Find Cylinder". If the cylinder is found, you will see the information on the right side of the screen.
2. You can also build the cylinder with what you want in the section on the left. As you change selections on the left the information on the right will update in real time.
3. Once you have completed the cylinder to what you are wanting select the Add to Cart button and follow the same instructions as in the previous section.
4. Additional information is available by selecting the black circles with the , a brief pop up will explain what is available.

# Online CAD Configurator User Guide- Accessories

## Pricing & Lead Time



Enter Speed Number Cart View

SKU FRC-1500-10

Quantity 1

Discount 35.00 %

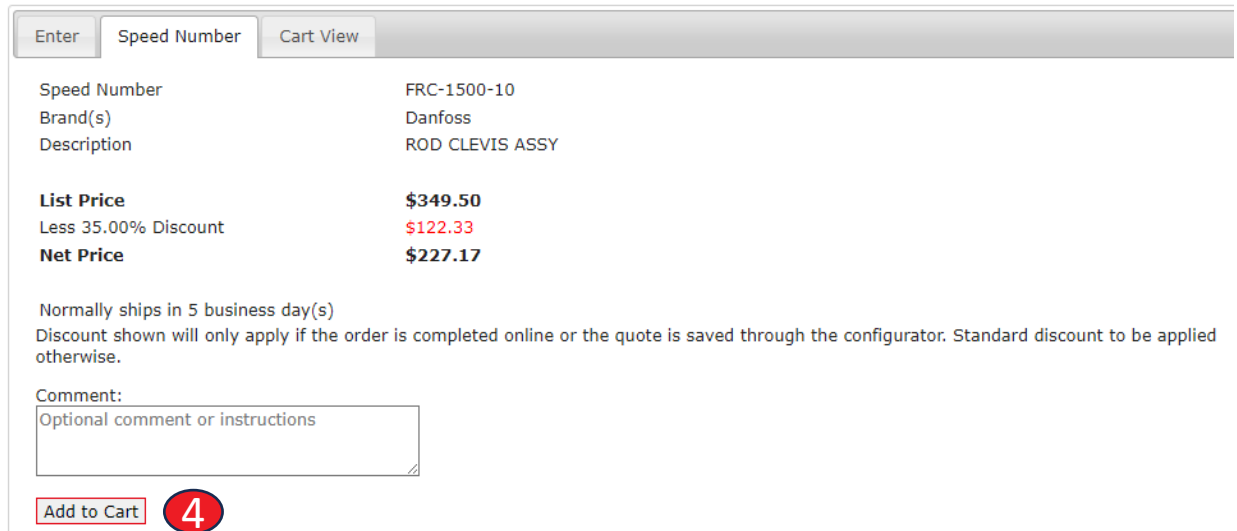
Country United States

Best Price? ☐

Enter

1. Put Accessory part number in the SKU box.
2. Discount will auto populate when you select enter.
3. Select Enter to see price of item.

## Pricing & Lead Time



Enter Speed Number Cart View

Speed Number FRC-1500-10

Brand(s) Danfoss

Description ROD CLEVIS ASSY

<b>List Price</b>	<b>\$349.50</b>
Less 35.00% Discount	<b>\$122.33</b>
<b>Net Price</b>	<b>\$227.17</b>

Normally ships in 5 business day(s)

Discount shown will only apply if the order is completed online or the quote is saved through the configurator. Standard discount to be applied otherwise.

Comment:

Optional comment or instructions

Add to Cart

4. Add to cart and follow same instructions in previous section to complete purchase .

# Export Data Sheet

Select CAD & Preview for Specs sheet,  
same process for all options.

## Part Number Configurator

Search by PN  [Find Cylinder](#)

Part No.

Series

Bore  Inch

Mounting Styles

Working Stroke  180 Inch

Gross Stroke (Working Stroke)  Inch

Info

**CAD & Preview**

Calculations

Calculations Help

Brand	Vickers by Danfoss	Price Components	
NZ	Series	ANSI B93.15/NFPA Interchangeable Hydraulic cylinder	Base Price \$1,064.00
01	Mounting Style	Side Lug	Seal options \$0.00
GH	Bore & Rod Diameter	3-1/4" Bore, 1-3/8" Rod	Cushions \$0.00
S	Rod End Type	Small Male UN Thd.	Stroke \$21.10
N	Seal Options	Normal	(1" Gross Stroke @ \$21.10)
1	Port Options	Standard NPTF (Not recommended for maximum reliability on new applications)	Port options \$0.00
K	Port Location	Head: 1 Cap: 1	List Price \$1,085.10
A	Cushion Location	Head: - Cap: -	
001	Cylinder Stroke	0-1/16"	

Normally ships in 5 business day(s)

Comment:  
Optional comment or instructions

[Add to Cart](#)

Select Download for PDF datasheet

## Part Number Configurator

Search by PN  [Find Cylinder](#)

Part No.

Series

Bore  Inch

Mounting Styles

Working Stroke  180 Inch

Gross Stroke (Working Stroke + Stop Tube Length)  Inch

Rod Position

Rod Position Stroke

Rod Size  Inch

Rod End Type

Info

CAD & Preview

Calculations

Calculations Help

[Download CAD](#)

[Download PDF datasheet](#)

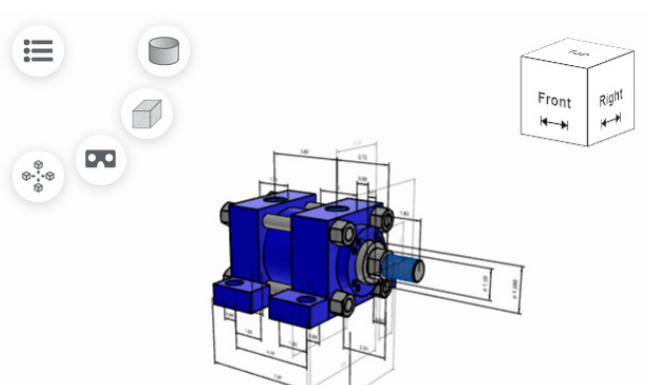
**NZ01GH5N1KA00100\_ZR00 (PDF)**

[Download](#) [Information](#) [Delete](#)

3D

Dimension

2D



# Export Data Sheet

Downloads

Click on Open file

Open file

Name Type

NZ01GH5N1KA00100\_ZR00.pdf Adobe Acrobat Document

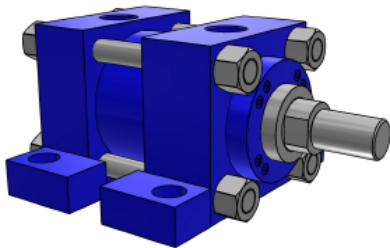
Double click pdf file

**Vickers® by Danfoss Cylinders**

**Heavy-Duty Small Bore Series NZ**

Danfoss Power Solutions  
14615 Lone Oak Road  
Eden Prairie, MN 55344  
USA  
Tel: 952-937-9800  
www.danfoss.com

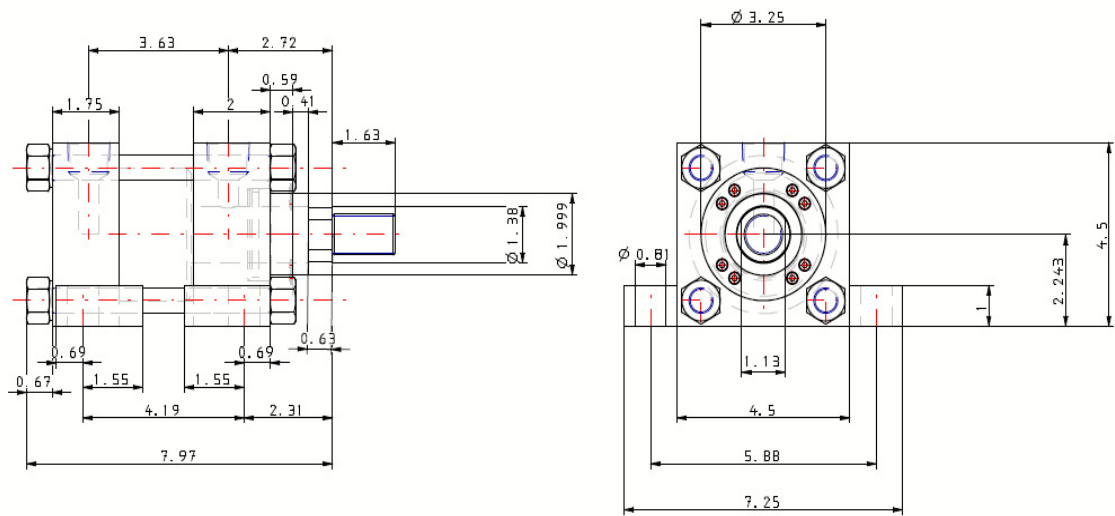
**Part Number: NZ01GH5N1KA00100**



Series	NZ
Mounting Styles	Side lug (MS2)
Bore (INCH)	3-1/4
Rod Size (INCH)	1-3/8
Working Stroke (INCH)	0.0625
Rod Position	Fully Retracted
Rod Position Stroke (INCH)	0
Extra Rod Projection (INCH)	0
Rod End Type	Small Male UN Thd.
Rod Thread	1-14 INCH
Rod Thread Length	1.63 INCH
Tapped Thread Spec.(INCH)	N/A
Tie Rod Thread Spec.(INCH)	N/A
Seal Options	Normal
Port Options	Standard NPTF
Port Size	3/4 INCH
Port Locations (Head)	1
Port Locations (Cap)	1
Cushion Location (Head)	-
Cushion Location (Cap)	-
Pull Pressure (PSI)	3000
Push Pressure (PSI)	3000

## Spec Sheet

# Export Data Sheet



THE REPRODUCTION, DISTRIBUTION, AND UTILIZATION OF THIS DOCUMENT AS WELL AS THE COMMUNICATION OF ITS CONTENTS TO OTHERS WITHOUT EXPLICIT AUTHORIZATION IS PROHIBITED. OFFENDERS WILL BE HELD LIABLE FOR THE PAYMENT OF DAMAGES. ALL RIGHTS RESERVED IN THE EVENT OF THE GRANT OF A PATENT, UTILITY MODEL, OR DESIGN. (PER ISO 16016)

Port Position



## UNLESS OTHERWISE SPECIFIED

All Dimensions noted in inches unless otherwise specified.  
Dimensioning per ANSI Y14.5  
Work to dimensions & DO NOT SCALE PRINT

THIRD ANGLE PROJECTION

*Danfoss*

DWG. NO.:

DWG. TITLE:

CYLINDER ASSEMBLY

NZ01GH5N1KA00100

## 2D Drawing

# Export Data Sheet

Part No.	NZ01GH5N1KA00100
Series	NZ
Bore	3-1/4 INCH
Mounting Styles	01 Side Lug (MS2)
Working Stroke	0.0625 INCH
Gross Stroke (Working Stroke + Stop Tube Length)	0.0625 INCH
Rod Position	Fully Retracted
Rod Position Stroke	0
Rod Size	1-3/8 INCH
Rod End Type	5 Small Male UN Thd.
Seal Options	Normal
Port Options	Standard NPTF
Port Locations (Head)	1
Port Locations (Cap)	1
Cushion Location (Head)	Without Cushion
Cushion Location (Cap)	Without Cushion
Extra Rod Projection	0 INCH
No. of A/C Flat	Standard Flats
Gland Drain Selection	Without Gland Drain
Gland Drain Location (Head)	N/A
Gland Drain Location (Cap)	N/A
Proximity Switch	Without Proximity Switch
Proximity Switch Location (Head)	N/A
Proximity Switch Location (Cap)	N/A
Air Bleed	Without Air Bleed
Air Bleed Location (Head)	N/A
Air Bleed Location (Cap)	N/A
Note for Side Lug / Side End Lug position 3 (bottom) feature	-
Stop Tube	Without Stop Tube
Stop Tube Length	0 INCH
Stop Tube note	-
Specify XV Dimension (Only Mounting Style NZ15 or NZ34)	0 INCH
Keyed Piston to Rod	Without Keyed Piston to Rod
Rod Material	Standard
Head End Accessories	Without Head End Accessories
Head End Accessory Attachments	N/A
Head End Self Aligning Coupler	Without Self-Aligning Coupler
Head End Rod End Coupling	N/A
Cap End Accessories	N/A
Cap End Accessory Attachments	N/A
Cap End Self Aligning Coupler	N/A
Cap End Rod End Coupling	N/A

# Spec Sheet



For questions, please contact your CSR.  
Call 888-258-0222 option #1, option #4

**Danfoss Power Solutions**, Nordborgvej 81, 6430 Nordborg, Denmark  
Tel. +45 74 88 22 22, Fax +45 74 65 25 80 [www.danfoss.com](http://www.danfoss.com), E-mail: [info@danfoss.com](mailto:info@danfoss.com)

Any information, including, but not limited to information on selection of product, its application or use, product design, weight, dimensions, capacity or any other technical data in product manuals, catalogues descriptions, advertisements, etc. and whether made available in writing, orally, electronically, online or via download, shall be considered informative, and is only binding if and to the extent, explicit reference is made in a quotation or order confirmation. Danfoss cannot accept any responsibility for possible errors in catalogues, brochures, videos and other material. Danfoss reserves the right to alter its products without notice. This also applies to products ordered but not delivered provided that such alterations can be made without changes to form, fit or function of the product. All trademarks in this material are property of Danfoss A/S or Danfoss group companies. Danfoss and the Danfoss logo are trademarks of Danfoss A/S.