

Relief Valves

1ARD100

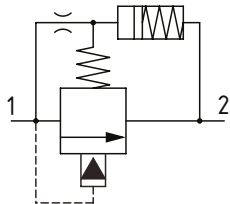
Relief Valve, Pilot operated, Spool Type, Anti-Shock

210 bar [3000 psi] • 100 l/min [26 US gpm]

DESCRIPTION AND OPERATION

This is a pilot operated relief valve designed to remove pressure spikes in a system by providing dampening on initial opening. System pressure acts on the pilot section of the valve, and when the setting is reached pilot flow passes through the center of the dampening piston and through an orifice to tank. The flow through the orifice causes the dampening piston to compress the main spring to increase the setting. The level of dampening is determined by the distance moved by the dampening piston. The amount of dampening can be adjusted clockwise to reduce the amount of dampening.

SCHEMATIC



PERFORMANCE DATA

Rated pressure	210 bar [3000 psi]
Rated flow	100 l/min [26 US gpm]
Leakage	100 ml/min nominal
Weight	0.41 kg [0.9 lb]
Cavity	A881

MODEL CODE

1ARD100 - N - 4W - 20 - S - 377 - 60

Basic Code

1ARD100 - No housing
 1ARD145 - Cartridge and housing
 1ARD150/1ARD155 - Cartridge and housing through ported

Adjustment Option

N - Non-adjustable
 *Valve is pre-set at the factory to a specific pressure setting. Only the level of dampening can be adjusted.

Housing

Code	Ports	Housing Model Code				
		Aluminum 1ARD145	Aluminum 1ARD150	Steel 1ARD150	Aluminum 1ARD155	Steel 1ARD155
Omit	No Housing					
3W	3/8" BSP		C1084			
4W	1/2" BSP	B4851	C1044	C593		
6W	3/4" BSP	B3954	C1086	C4917		
8W	1" BSP				B1617	B4596
6T	3/8" SAE		B10784			
8T	1/2" SAE	B19403	C7140			
12T	3/4" SAE	B19404	B10506	B10742		
16T	1" SAE				B1037	B24040

Pressure Setting

Code - Pressure setting in bar (10 bar increments within specified Pressure Range)
 Example:

Code	Bar	Psi
60	60	[870]

Housing Material

Omit - Aluminum/No housing
 377 - Steel

Seal Option

Code	Seal Kit
S-Buna-N	SK1412
SV-Viton	SK1412V

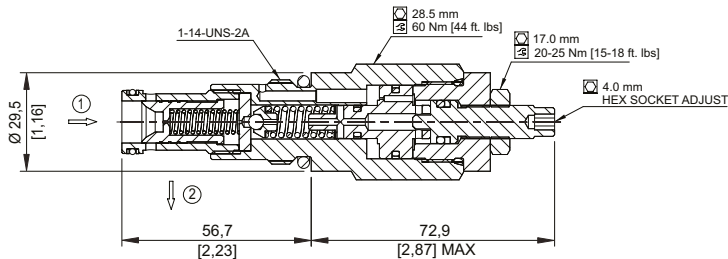
Pressure Range

Code	Bar	Psi
7	10-70	[145-1015]
20	10-210	[145-3000]

Setting fixed with +/- 10 bar tolerance at 10 l/min

DIMENSIONS

mm [in]

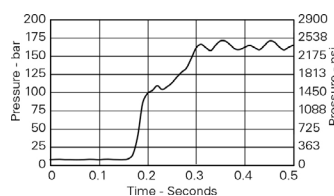


Installation torque
 60 Nm [44 ft. lbs]

PERFORMANCE CURVES

Typical Dampening

160 bar pressure setting



Pressure Override

