

# Relief Valves

## 1VR100

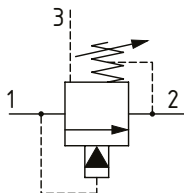
Relief Valve, Pilot Operated, Spool Type, Ventable

350 bar [5000 psi] • 100 l/min [26 US gpm]

### DESCRIPTION AND OPERATION

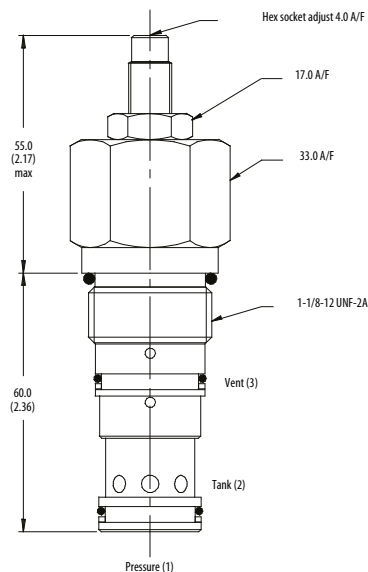
This is a pilot operated, spool type relief valve that relieves from port 1 to port 2 with a vent port 3. Using pilot control valves on the vent line, it can be used as a dump valve, in two pressure systems or as the main section of a proportional control valve while maintaining a maximum relief pressure.

### SCHEMATIC



### DIMENSIONS

mm [in]



Installation torque

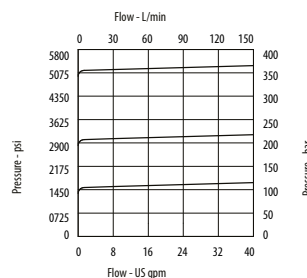
75 Nm [55 ft. lbs]

### PERFORMANCE DATA

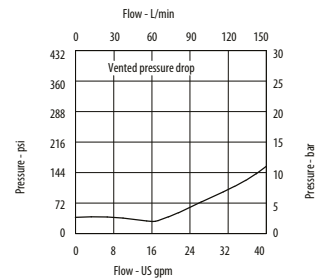
Rated pressure	350 bar [5000 psi]
Rated flow	100 l/min [26 US gpm]
Leakage	35 ml/min @ 280 bar [4060 psi]
Weight	0.46 kg [1.0 lb]
Cavity	A3146

### PERFORMANCE CURVES

#### Pressure Override



#### Pressure Drop



### MODEL CODE

**1VR100 - P - 8W - 35 - S - 377 - 60**

#### Basic Code

1VR100 - No housing  
1VR150 - Cartridge and housing

#### Adjustment Option

P - External  
G - Tamper resistant

#### Housing

Code	Ports	Housing Model Code	
		Aluminum	Steel
Omit	No Housing		
6W	3/4" BSP	B4377	B4378
12T	3/4" SAE	B10785	B11554

\* Aluminum bodies are to be used for pressures less than 210 bar [3000 psi].  
\* Additional housings available

#### Housing Material

Omit - Aluminum/No housing  
377 - Steel

#### Seal Option

Code	Seal Kit
S-Nitrile	SK275
SV-Viton	SK275V

#### Pressure Range

Code	Bar	Psi
20	10-210	[145-3000]
Standard Setting	100	[1450]
35	30-350	[435-5000]
Standard Setting	210	[3000]

Pressure setting made at 14 l/min

#### Pressure Setting

Code - Pressure setting in bar (5 bar increments within specified Pressure Range)  
XXX-Standard setting (see Pressure Range for value)  
Example:

Code	Bar	Psi
60	60	[870]