

Relief Valves

1LR300

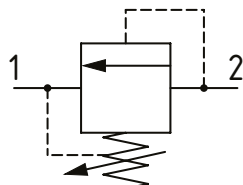
Relief Valve, Differential Area, Poppet Type

350 bar [5000 psi] • 380 l/min [100 US gpm]

DESCRIPTION AND OPERATION

This is a fast acting, differential area, poppet type relief valve that relieves from port 2 to 1. It can be used to protect an actuator from over-pressurization or to remove pressure spikes.

SCHEMATIC



PERFORMANCE DATA

Rated pressure	350 bar [5000 psi]
Rated flow	380 l/min [100 US gpm]
Leakage	1 ml/min nominal [15 drops/min]
Weight	1.04 kg [2.3 lb]
Cavity	A1126

MODEL CODE

1LR300 - F - 10W - 20 - S - 377 - 60

Basic Code

1LR300 - No Housing
1LR350 - Cartridge and housing

Adjustment Option

F - External

Housing

Code	Ports	Housing Model Code	
		Aluminum	Steel
Omit	No Housing		
10W	1 1/4" BSP	B5134	B882
20T	1 1/4" SAE	B7783	B11553

* Aluminum bodies are to be used for pressures less than 210 bar [3000 psi].

* Additional housings available

Pressure Setting

Code - Pressure setting in bar (5 bar increments within specified Pressure Range)

XXX - Standard setting (see Pressure Range for value)
Example:

Code	Bar	Psi
60	60	[870]

Housing Material

Omit - Aluminum/No housing
377 - Steel

Seal Option

Code	Seal Kit
S	Nitrile SK207
SV	Viton SK207V

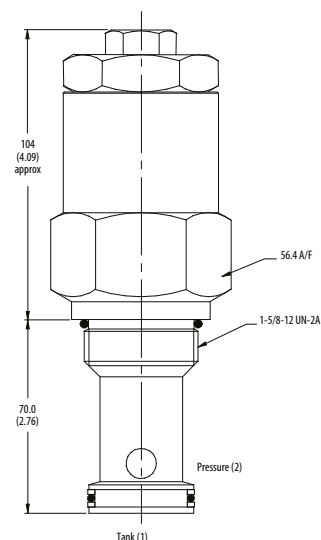
Pressure Range

Code	Bar	Psi
20	35-210	[508-3000]
Standard Setting	100	[1015]
35	70-350	[102-5000]
Standard Setting	280	[4060]

Pressure setting made at 30 l/min

DIMENSIONS

mm [in]



Installation Torque
150 Nm [110 ft. lbs]

PERFORMANCE CURVES

Pressure Override

