

Relief Valves

RV1-10

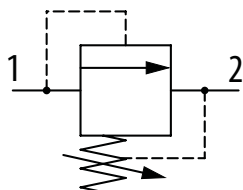
Relief valve, Direct Acting, Poppet Type

250 bar [3600 psi] • 30 l/min [8 US gpm]

DESCRIPTION AND OPERATION

This is a direct acting, poppet type relief valve that relieves from port 1 to 2. It can be used as a cost-effective main relief or to protect an actuator from over-pressurization.

SCHEMATIC



PERFORMANCE DATA

Rated pressure	250 bar [3600 psi]
Rated flow	30 l/min [8 US gpm]
Leakage	0.3 ml/min [5 drops/min] @ 85% of Pressure Setting
Weight	0.22 kg [0.48 lb]
Cavity	SDC10-2

MODEL CODE

RV1 - 10 - V - C - S - 2G - 3 - 10

Seal Option

Code	Seal Kit
B-Buna - N	565803
V-Viton	566086

Adjustment Option

C - Tamper Resistant
 F - Fixed
 I - Internal
 K - Knob
 S - External

Housing Material

Omit - Aluminum/No Housing
 S - Steel

Housing

Code	Ports	Housing Model Code		
		Aluminum Standard Duty	Aluminum Heavy Duty	Steel Heavy Duty
0	No Housing			
3B	3/8" BSP	02-175462	-	-
2G	1/4" BSP	-	876702	02-175102
3G	3/8" BSP	-	876703	02-175103
6H	#6 SAE	-	876700	-
8H	#8 SAE	-	876701	-
6T	#6 SAE	566151	-	02-175100
8T	#8 SAE	-	-	02-175101

Pressure Setting

Code x100 - Pressure setting in psi (50 psi increments within specified Pressure Range)
 XXX-Standard setting (see Pressure Range for value)
 Examples:

Code	Bar	Psi
10	69	[1000]
10.5	72.4	[1050]

Pressure Range

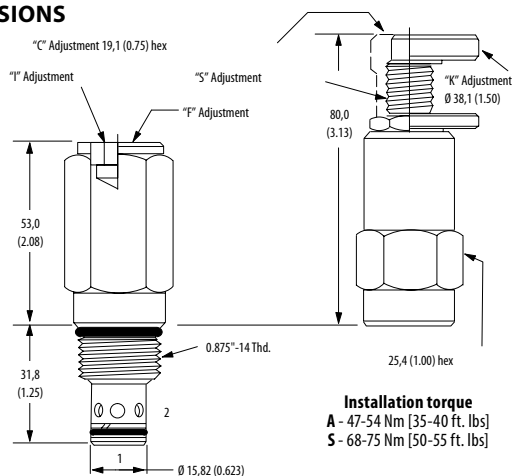
Code	Bar	Psi
3	3.5-20	[50-300]
Standard Setting	10.3	[150]
9	7-62	[100-900]
Standard Setting	31	[450]
18	17-124	[250-1800]
Standard Setting	62	[900]
30	34-210	[600-3000]
Standard Setting	103	[1500]
36	124-250	[1800-3600]
Standard Setting	124	[1800]

* Aluminum bodies are to be used for pressures less than 210 bar [3000 psi].

* Additional housings available

DIMENSIONS

mm [in]

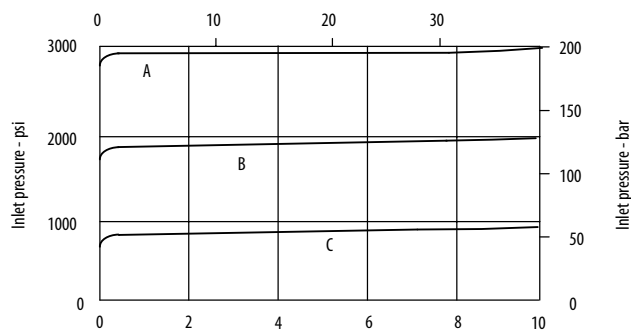


Installation torque
 A - 47-54 Nm [35-40 ft. lbs]
 S - 68-75 Nm [50-55 ft. lbs]

PERFORMANCE CURVES

Pressure Override

Flow - L/min (21/8 cSt oil @ 49°C)



Flow - USgpm (105 SUS oil @ 120°F)

A - 36 spring • B - 18 spring • C - 9 spring