

# Relief Valves

## RV3-12

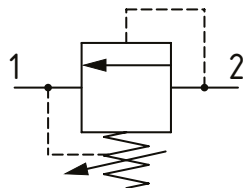
Relief Valve, Differential Area, Poppet Type

350 bar [5000 psi] • 132 l/min [35 US gpm]

### DESCRIPTION AND OPERATION

This is a fast acting, differential area, poppet type relief valve that relieves from port 2 to 1. It can be used to protect an actuator from over pressurization or to remove pressure spikes.

### SCHEMATIC

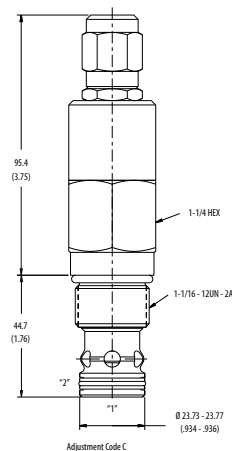


### PERFORMANCE DATA

Rated pressure	350 bar [5000 psi]
Rated flow	132 l/min [35 US gpm]
Leakage	5 drops/min @ 80% of Pressure Setting
Weight	0.49 kg [1.08 lb]
Cavity	C-12-2/C-12-2U

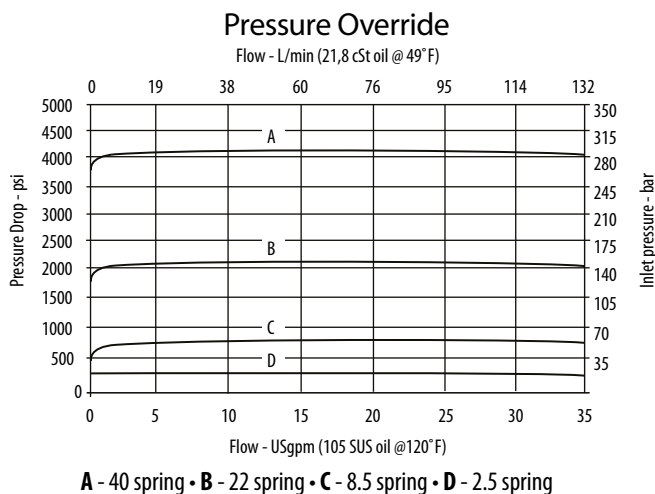
### DIMENSIONS

mm [in]



**Installation Torque**  
**A** - 81-95 Nm [60-70 ft. lbs]  
**S** - 102-115 Nm [75-85 ft. lbs]

### PERFORMANCE CURVES



### MODEL CODE

**RV3 - 12 - V - C - A - 4G - U - 2.5 - 10**

#### Seal Option

Code	Seal Kit
Omit - Buna - N	02-165889
V - Viton	02-165888

#### Adjustment Option

C - Tamper Resistant  
 F - Fixed  
 K - Knob  
 S - External

#### Housing Material

Omit - No Housing  
 A - Aluminum  
 S - Steel

#### Housing

Code	Ports	Housing Model Code			
		C-12-2 Aluminum Heavy Duty	C-12-2U Aluminum Heavy Duty	C-12-2 Steel Heavy Duty	C-12-2U Steel Heavy Duty
Omit	No Housing				
4G	1/2" BSP	02-161118	02-161116	02-172062	02-172512
6G	3/4" BSP	02-161117	02-161115	02-169665	02-162922
10T	#10 SAE	02-160640	02-160641	02-169744	02-169817
12T	#12 SAE	02-160644	02-160645	02-169782	02-169790

#### Pressure Range

Code x100 - Pressure setting in psi (50 psi increments within specified Pressure Range)  
 XXX - Standard setting (see Pressure Range for value).  
 Examples:

Code	Bar	Psi
10	69	[1000]
10.5	72.4	[1050]

#### Pressure Range

Code	Bar	Psi
2.5	3.4-17	[50-250]
Standard Setting	8.6	[125]
8.5	13-55	[200-850]
Standard Setting	29	[425]
22	20-150	[300-2200]
Standard Setting	76	[1100]
40	40-275	[600-4000]
Standard Setting	138	[2000]

#### Cavity

Omit - Cavity without undercut/No housing  
 U - Cavity with undercut

\* Aluminum bodies are to be used for pressures less than 210 bar [3000 psi].

\* Additional housings available