

Relief Valves

RV5-10

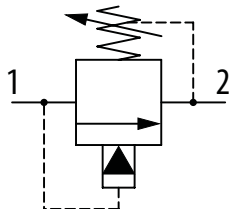
Relief valve, Pilot operated, Spool Type

350 bar [5000 psi] • 114 l/min [30 US gpm]

DESCRIPTION AND OPERATION

This is a pilot operated, spool type relief valve that relieves from port 1 to port 2. It can be used to limit pressure in a system while maintaining accurate pressure control with constant or varying flows.

SCHEMATIC



PERFORMANCE DATA

Rated pressure	350 bar [5000 psi]
Rated flow	114 l/min [30 US gpm]
Leakage	114 ml/min [7 l ⁿ /min] @ 350 bar [5000 psi]
Weight	0.22 kg [0.48 lb]
Cavity	SDC10-2

MODEL CODE

RV5 - A - 10 - V - C - S - 2G - 20 - 10

Seal Configuration

Omit - Single back-up ring as shown
A - 1/2 thickness back-up ring on each side of o-ring (for cross port relief applications)

Seal Option

Code	Seal kit
Omit -Buna - N	565803
V -Viton	565806

Adjustment Option

C - Tamper Resistant
F - Fixed
I - Internal
K - Knob
S - External

Housing Material

Omit - Aluminum/No housing
S - Steel

Housing

Code	Ports	Housing Model Code	Housing		
			Aluminum Standard Duty	Aluminum Heavy Duty	Steel Heavy Duty
0	No Housing				
3B	3/8" BSP	02-175462	-	-	-
2G	1/4" BSP	-	876702	-	02-175102
3G	3/8" BSP	-	876703	-	02-175103
6H	#6 SAE	-	876700	-	-
8H	#8 SAE	-	876701	-	-
6T	#6 SAE	566151	-	-	02-175100
8T	#8 SAE	-	-	-	02-175101

Pressure Setting

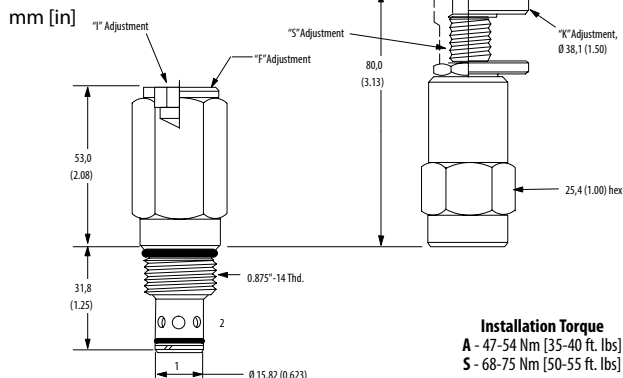
Code x100 - Pressure setting in psi (50 psi increments within specified Pressure Range)
XXX-Standard setting (see Pressure Range for value)
 Examples:

Code	Bar	Psi
10	6.9	[1000]
10.5	7.24	[1050]

Pressure Range

Code	Bar	Psi
3	3.4-20	[50-300]
Standard Setting	10.3	[150]
20	7-140	[100-2000]
Standard Setting	69	[1000]
35	17-240	[250-3500]
Standard Setting	121	[1750]
50	35-350	[500-5000]
Standard Setting	172	[2500]

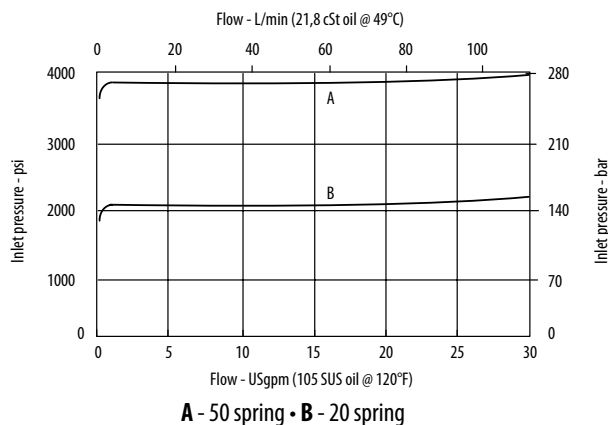
DIMENSIONS



Installation Torque
A - 47-54 Nm [35-40 ft. lbs]
S - 68-75 Nm [50-55 ft. lbs]

PERFORMANCE CURVES

Pressure Override



A - 50 spring • **B** - 20 spring