

Relief Valves

RV8-8

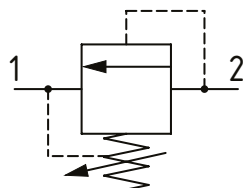
Relief Valve, Differential Area, Poppet Type

350 bar [5000 psi] • 30 l/min [8 US gpm]

DESCRIPTION AND OPERATION

This is a fast acting, differential area, poppet type relief valve that relieves from port 2 to 1. It can be used to protect an actuator from over pressurization or to remove pressure spikes.

SCHEMATIC



PERFORMANCE DATA

Rated pressure	350 bar [5000 psi]
Rated flow	30 l/min [8 US gpm]
Leakage	5 drops/min @ 80% of cracking pressure
Weight	0.20 kg [0.43 lb]
Cavity	SDC08-2

MODEL CODE

RV8 - 8 - V - C - A - 2G - 15 - 15

Seal Option

Code	Seal Kit
Omit-Buna - N	02-165874
V-Viton	02-165877

Adjustment Option

C - Tamper Resistant
K - Knob
S - External

Housing Material

Omit - No Housing
S - Steel
A - Aluminum

Housing

Code	Ports	Housing Model Code	
		Aluminum Heavy Duty	Steel Heavy Duty
0	No Housing		
4T	#4 SAE	02-160730	02-160736
6T	#6 SAE	02-160731	02-160737
8T	#8 SAE	02-160732	02-160738
2G	1/4" BSP	02-160727	02-160733
3G	3/8" BSP	02-160728	02-160734

* Aluminum bodies are to be used for pressures less than 210 bar [3000 psi].
* Additional housings available

Pressure Setting

Code x100 - Pressure setting in psi (100 psi increments within specified Pressure Range)
XXX-Standard setting (see Pressure Range for value)
Example:

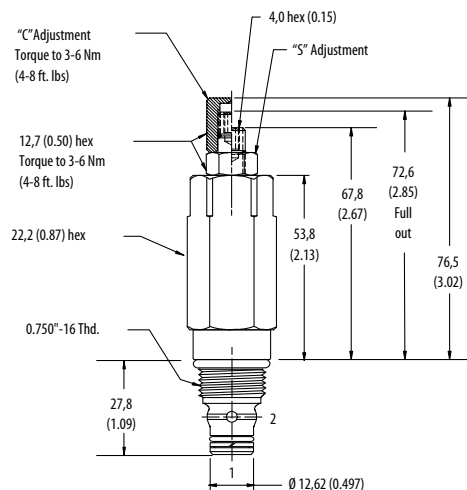
Code	Bar	Psi
15	103	[1500]

Pressure Range

Code	Bar	Psi
15	3.4-100	[50-1500]
Standard Setting	52	[750]
30	70-210	[1000-3000]
Standard Setting	103	[1500]
50	70-350	[1000-5000]
Standard Setting	175	[2500]

DIMENSIONS

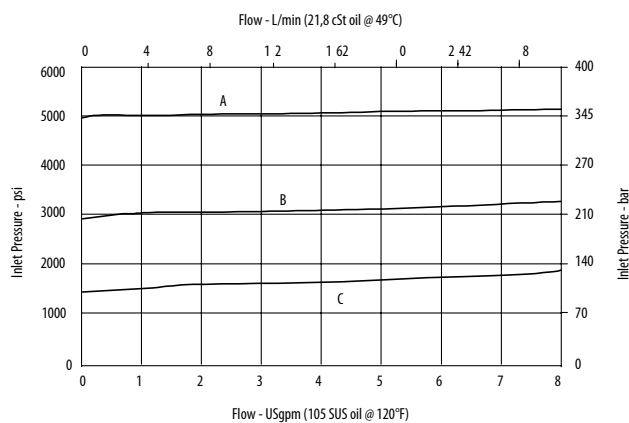
mm [in]



Installation torque
34-41 Nm [25-30 ft lbs]

PERFORMANCE CURVES

Pressure Override



A - 50 spring • B - 30 spring • C - 15 spring