

# Relief Valves

## RV8-10

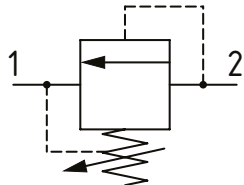
Relief Valve, Differential Area, Poppet Type

350 bar [5000 psi] • 76 l/min [20 US gpm]

### DESCRIPTION AND OPERATION

This is a fast acting, differential area, poppet type relief valve that relieves from port 2 to 1. It can be used to protect an actuator from over pressurization or to remove pressure spikes.

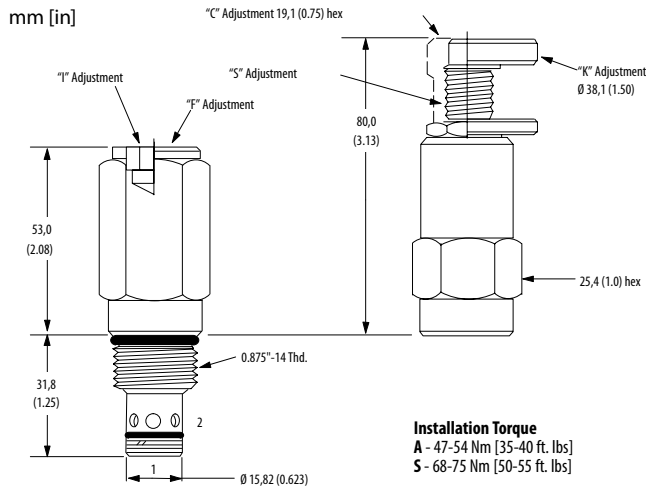
### SCHEMATIC



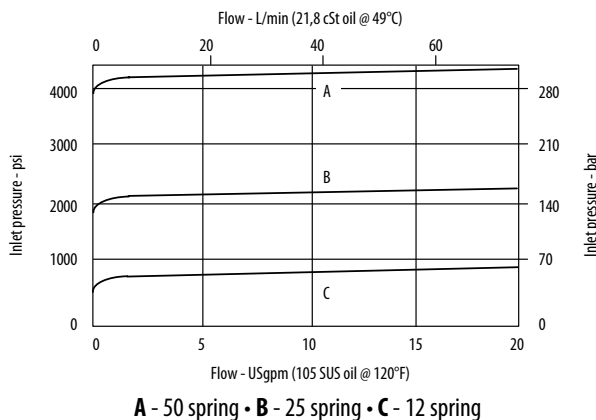
### PERFORMANCE DATA

Rated pressure	350 bar [5000 psi]
Rated flow	76 l/min [20 US gpm]
Leakage	0.3 ml/min [5 drops/min] @ 85% of Pressure Setting
Weight	0.22 kg [0.48 lb]
Cavity	SDC10-2

### DIMENSIONS



### PERFORMANCE CURVES



### MODEL CODE

**RV8 - A - 10 - V - C - S - 2G - 4 - 10**

#### Seal Configuration

**Omit** - Single back-up ring as shown  
**A** - 1/2 thickness back-up ring on each side of o-ring (for cross port relief applications)

#### Seal Option

Code	Seal Kit
<b>Omit</b> -Buna - N	565803
<b>V</b> -Viton	566086

#### Adjustment Option

**C** - Tamper Resistant  
**F** - Fixed  
**K** - Knob  
**S** - External  
**I** - Internal

#### Housing Material

**Omit** - Aluminum/No housing  
**S** - Steel

#### Housing

Code	Ports	Housing Model Code		
		Aluminum Standard Duty	Aluminum Heavy Duty	Steel Heavy Duty
<b>0</b>	No Housing			
<b>3B</b>	3/8" BSP	02-175462	-	-
<b>2G</b>	1/4" BSP	-	876702	02-175102
<b>3G</b>	3/8" BSP	-	876703	02-175103
<b>6H</b>	#6 SAE	-	876700	-
<b>8H</b>	#8 SAE	-	876701	-
<b>6T</b>	#6 SAE	566151	-	02-175100
<b>8T</b>	#8 SAE	-	-	02-175101

#### Pressure Setting

**Code** x100 - Pressure setting in psi (50 psi increments within specified Pressure Range)  
**XXX**-Standard setting (see Pressure Range for value)  
 Example:

Code	Bar	Psi
<b>10</b>	69	[1000]
<b>10.5</b>	72.4	[1050]

#### Pressure Range

Code	Bar	Psi
<b>4</b>	3.45-30	[50-450]
Standard Setting	15.5	[225]
<b>12</b>	7-86	[100-1250]
Standard Setting	43	[625]
<b>25</b>	17-175	[250-2500]
Standard Setting	86	[1250]
<b>50</b>	38-350	[550-5000]
Standard Setting	172	[2500]

\* Aluminum bodies are to be used for pressures less than 210 bar [3000 psi].

\* Additional housings available