

Relief Valves

RV11-12

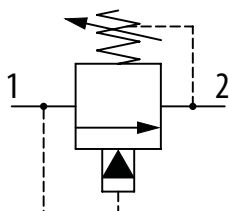
Relief valve, Pilot operated, Spool Type

350 bar [5000 psi] • 190 l/min [50 US gpm]

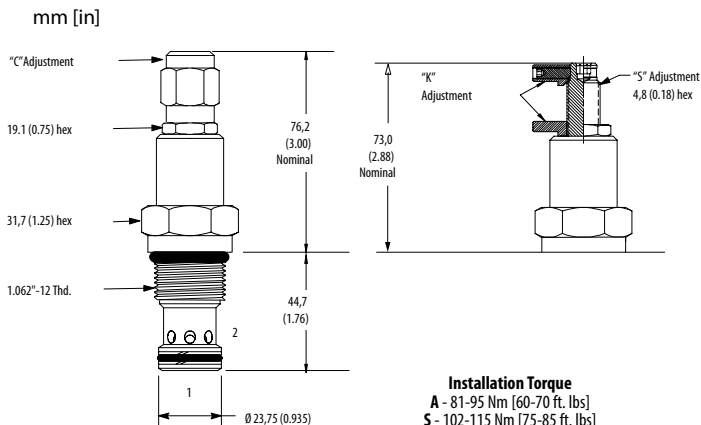
DESCRIPTION AND OPERATION

This is a pilot operated, spool type relief valve that relieves from port 1 to port 2. It can be used to limit pressure in a system while maintaining accurate pressure control with constant or varying flows.

SCHEMATIC



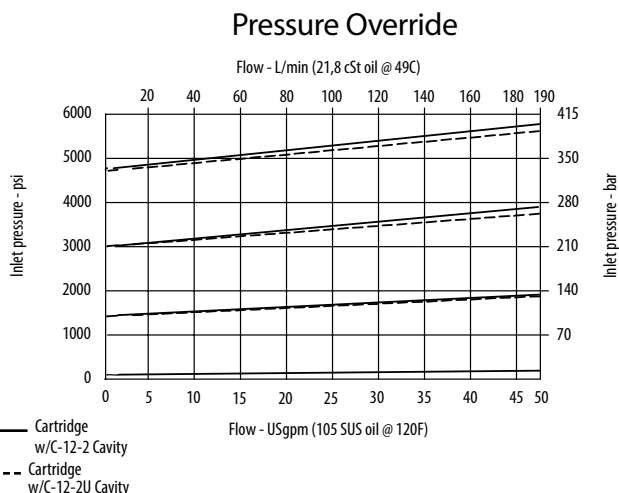
DIMENSIONS



PERFORMANCE DATA

Rated pressure	350 bar [5000 psi]
Rated flow	190 l/min [50 US gpm]
Leakage	131 ml/min [8 in3/min] @ 350 bar [5000 psi]
Weight	0.3 kg [0.68 lb]
Cavity	C-12-2 / C-12-2U

PERFORMANCE CURVES



MODEL CODE

RV11 - 12 - V - S - A - 4G - U - 15 - 10

Seal Option

Code	Seal Kit
Omit-Buna - N	02-165889
V-Viton	02-165888

Adjustment Option

S - External
C - Tamper Resistant
K - Knob

Housing Material

Omit - No Housing
A - Aluminum
S - Steel

Housing

Code	Ports	Housing Model Code			
		C-12-2 Aluminum Heavy Duty	C-12-2U Aluminum Heavy Duty	C-12-2 Steel Heavy Duty	C-12-2U Steel Heavy Duty
0	No Housing				
10T	#10 SAE	02-160640	02-160641	02-169744	02-169817
12T	#12 SAE	02-160644	02-160645	02-169782	02-169790
4G	1/2" BSP	02-161118	02-161116	02-172062	02-172512
6G	3/4" BSP	02-161117	02-161115	02-169665	02-169922

* Aluminum bodies are to be used for pressures less than 210 bar [3000 psi].

* Additional housings available

Pressure Setting

Code x100 - Pressure setting in psi (50 psi increments within specified Pressure Range)
XXX-Standard setting (see Pressure Range for value)
Examples:

Code	Bar	Psi
10	69	[1000]
10.5	72.4	[1050]

Pressure Range

Code	Bar	Psi
15	10.3-103	[150-1500]
Standard Setting	52	[750]
30	17-210	[250-3000]
Standard Setting	103	[1500]
50	24-350	[350-5000]
Standard Setting	172	[2500]

Cavity

Omit - Cavity without undercut/No housing
U - Cavity with undercut