

Relief Valves

CP200-1

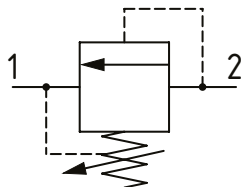
Relief Valve, Differential Area, Poppet Type

250 bar [3600 psi] • 76 l/min [20 US gpm]

DESCRIPTION AND OPERATION

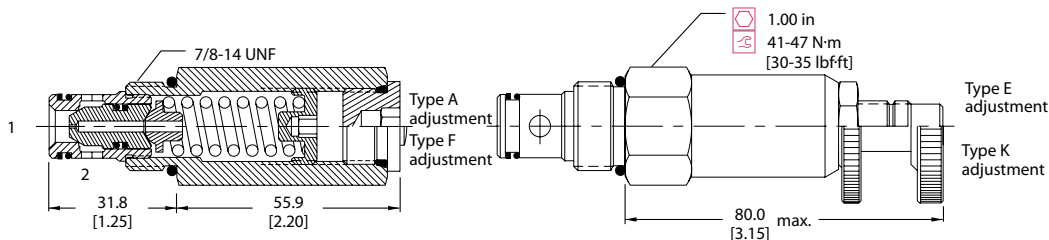
This is a fast acting, differential area, poppet type relief valve that relieves from port 2 to 1. It can be used to protect an actuator from over-pressurization or to remove pressure spikes.

SCHEMATIC



DIMENSIONS

mm [in]

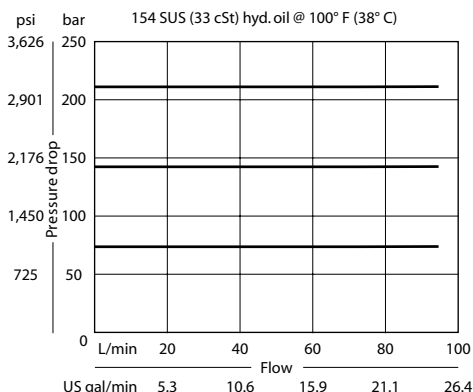


PERFORMANCE DATA

Rated pressure	250 bar [3600 psi]
Rated flow	76 l/min [20 US gpm]
Leakage	10 drops/min @ 80% of pressure setting
Weight	0.21 kg [0.46 lb]
Cavity	SDC10-2

PERFORMANCE CURVES

Pressure Override



MODEL CODE

CP200 - 1 - B - 8S - A - C - 150

Seal Option

Code	Seal kit
B-Buna-N	120015
V-Viton	120016

Housing

Code	Ports & Material	Housing Model Code
0	No Housing	No Housing
DG3B	AL, 3/8 BSP	SDC10-2-DG-3B
DG4B	AL, 1/2 BSP	SDC10-2-DG-4B
6S	AL, #6 SAE	SDC10-2-6S
8S	AL, #8 SAE	SDC10-2-8S

* Aluminum bodies are to be used for pressures less than 210 bar [3000 psi].

* Additional housings available

Adjustment Option

A - Internal
E - External
F - Tamper resistant
K - Knob

Pressure Setting

Example:

Code x10 - Pressure setting in psi (50 psi increments within specified Pressure Range)	Code	Bar	Psi
150	103	[1500]	

Pressure Range

Code	Bar	Psi
A	7-55	[100-800]
Standard Setting	28	[400]
B	17-138	[200-2000]
Standard Setting	69	[1000]
C	41-250	[600-3600]
Standard Setting	103	[1500]