

Relief Valves

CP200-7

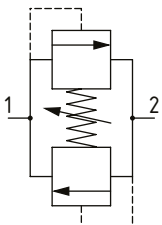
Relief Valve, Differential Area, Poppet Type, Bi-directional

250 bar [3600 psi] • 40 l/min [11 US gpm]

DESCRIPTION AND OPERATION

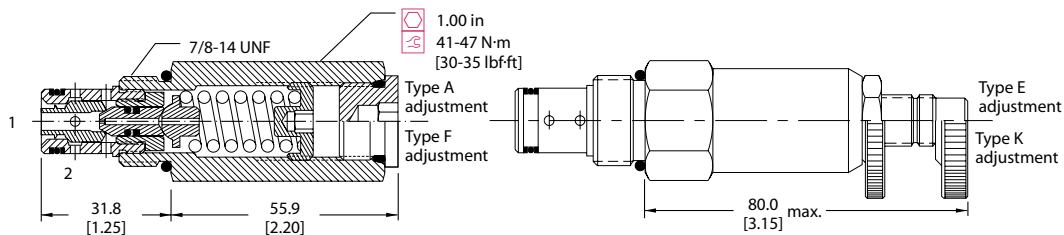
This is a bi-directional relief valve that relieves from port 1 to 2 and from port 2 to 1. It is ideal as a cross port relief valve protection for motor applications.

SCHEMATIC



DIMENSIONS

mm [in]

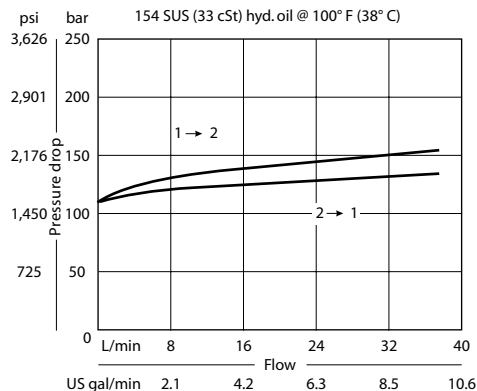


PERFORMANCE DATA

Rated pressure	250 bar [3600 psi]
Rated flow	40 l/min [11 US gpm]
Leakage	5 ml/min [0.3 l ³ /min] @ 80% of pressure setting
Weight	0.20 kg [0.43 lb]
Cavity	SDC10-2

PERFORMANCE CURVES

Pressure Override



MODEL CODE

CP200 - 7 - B - 8S - A - C - 150

Seal Option

Code	Seal kit
B -Buna-N	120073
V -Viton	120074

Housing

Code	Ports & Material	Housing Model Code
0	No Housing	No Housing
DG3B	AL, 3/8 BSP	SDC10-2-DG-3B
DG4B	AL, 1/2 BSP	SDC10-2-DG-4B
6S	AL, #6 SAE	CP10-2-6S
8S	AL, #8 SAE	CP10-2-8S

* Aluminum bodies are to be used for pressures less than 210 bar [3000 psi].

* Additional housings available

Adjustment Option

A - Internal
E - External
F - Tamper resistant
K - Knob

Pressure Setting

Code x10 - Pressure setting in psi
 (50 psi increments within specified Pressure Range)
XXX - Standard setting (see Pressure Range for value)
 Example:

Code	Bar	Psi
150	103	[1500]

Pressure Range

Code	Bar	Psi
A	7-41	[100-600]
Standard Setting	28	[400]
B	17-97	[250-1400]
Standard Setting	69	[1000]
C	41-250	[600-3600]
Standard Setting	103	[1500]