

Relief Valves

CP201-1

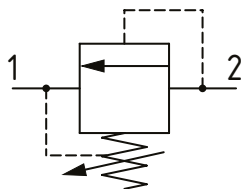
Relief Valve, Differential Area, Poppet Type

250 bar [3600 psi] • 150 l/min [40 US gpm]

DESCRIPTION AND OPERATION

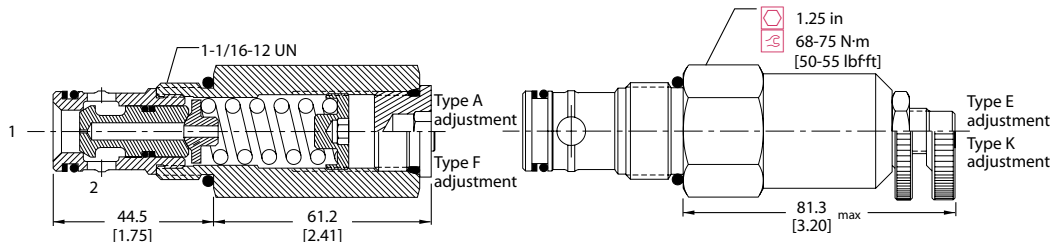
This is a fast acting, differential area, poppet type relief valve that relieves from port 2 to 1. It can be used to protect an actuator from over-pressurization or to remove pressure spikes.

SCHEMATIC



DIMENSIONS

mm [in]

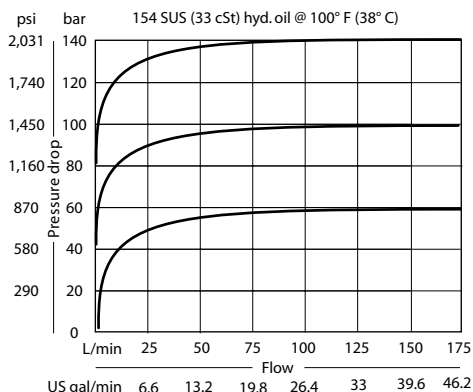


PERFORMANCE DATA

Rated pressure	250 bar [3600 psi]
Rated flow	150 l/min [40 US gpm]
Leakage	10 drops/min @ 80% of pressure setting
Weight	0.42 kg [0.92 lb]
Cavity	CP12-2

PERFORMANCE CURVES

Pressure Override



MODEL CODE

CP201 - 1 - B - 12S - A - C - 150

Seal Option

Code	Seal kit
B-Buna-N	120017
V-Viton	120018

Housing

Code	Ports & Material	Housing Model Code
0	No Housing	No Housing
4B	AL, 1/2 BSP	CP12-2-4B
6B	AL, 3/4 BSP	CP12-2-6B
10S	AL, #10 SAE	CP12-2-10S
12S	AL, #12 SAE	CP12-2-12S

* Aluminum bodies are to be used for pressures less than 210 bar [3000 psi]. * Additional housings available

Adjustment Option

A - Internal
E - External
F - Tamper resistant
K - Knob

Pressure Setting

Code x10 - Pressure setting in psi (50 psi increments within specified Pressure Range)
XXX-Standard setting (see Pressure Range for value)
Example:

Code	Bar	Psi
150	103	[1500]

Pressure Range

Code	Bar	Psi
A	7-69	[100-1000]
Standard Setting	28	[400]
B	17-172	[250-2500]
Standard Setting	69	[1000]
C	35-250	[500-3600]
Standard Setting	103	[1500]