

Relief Valves

CP208-1

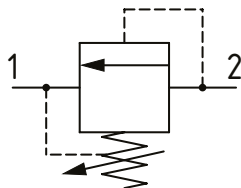
Relief Valve, Differential Area, Poppet Type

250 bar [3600 psi] • 40 l/min [11 US gpm]

DESCRIPTION AND OPERATION

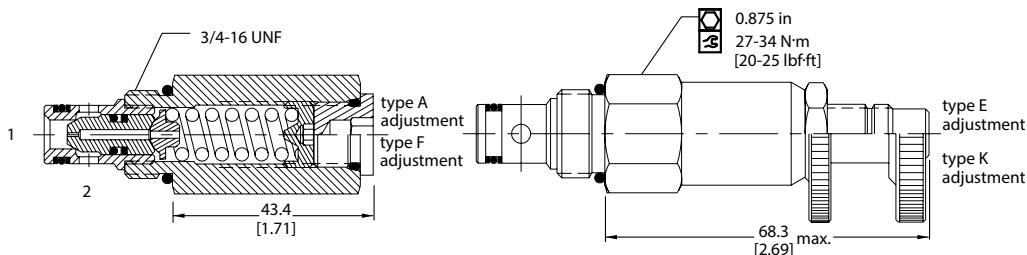
This is a fast acting, differential area, poppet type relief valve that relieves from port 2 to 1. It can be used to protect an actuator from over-pressurization or to remove pressure spikes.

SCHEMATIC



DIMENSIONS

mm [in]

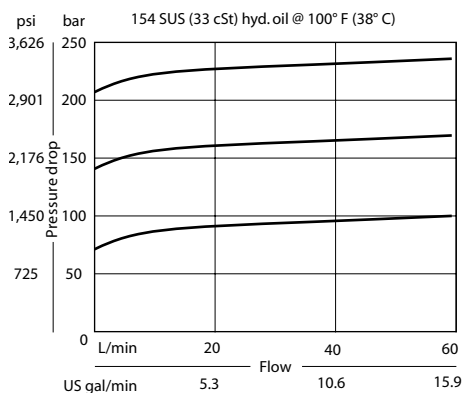


PERFORMANCE DATA

Rated pressure	250 bar [3600 psi]
Rated flow	40 l/min [11 US gpm]
Leakage	10 drops/min @ 80% of pressure setting
Weight	0.15 kg [0.32 lb]
Cavity	SDC08-2

PERFORMANCE CURVES

Pressure Override



MODEL CODE

CP208 - 1 - B - 6S - A - C - 150

Seal Option

Code	Seal kit
B-Buna-N	120227
V-Viton	120228

Housing

Code	Ports & Material	Housing Model Code
0	No Housing	No Housing
DG2B	AL, 1/4 BSP	SDC08-2-DG-2B
DG2B	AL, 3/8 BSP	SDC08-2-DG-3B
4S	AL, #4 SAE	CP08-2-4S
6S	AL, #6 SAE	CP08-2-6S

* Aluminum bodies are to be used for pressures less than 210 bar [3000 psi]. * Additional housings available

Adjustment Option

A - Internal
E - External
F - Tamper resistant
K - Knob

Pressure Setting

Code x10 - Pressure setting in psi (50 psi increments within specified Pressure Range)
XXX-Standard setting (see Pressure Range for value)
Example:

Code	Bar	Psi
150	103	[1500]

Pressure Range

Code	Bar	Psi
A	7-69	[100-1000]
Standard Setting	28	[400]
B	14-138	[200-2000]
Standard Setting	69	[1000]
C	35-250	[500-3600]
Standard Setting	103	[1500]