

# Relief Valves

## CP210-1

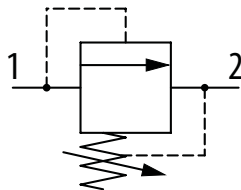
Relief Valve, Direct Acting, Spool Type

210 bar [3000 psi] • 45 l/min [12 US gpm]

### DESCRIPTION AND OPERATION

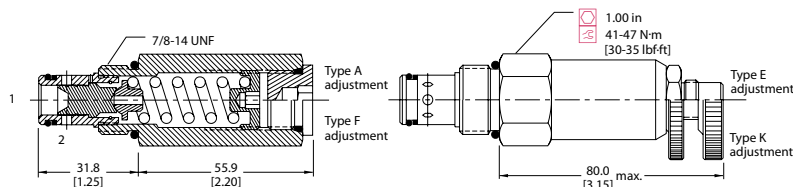
This is a direct acting spool, type relief valve that relieves from port 1 to 2. It has been designed to give stable performance at lower pressure and can be used as a purge relief, bypass filter elements or in applications that require better control.

### SCHEMATIC



### DIMENSIONS

mm [in]

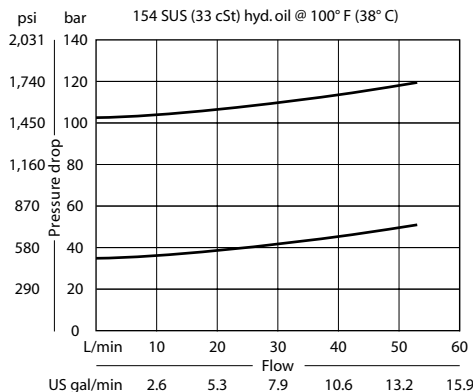


### PERFORMANCE DATA

Rated pressure	210 bar [3000 psi]
Rated flow	45 l/min [12 US gpm]
Leakage	82 ml/min [5 in <sup>3</sup> /min] @ 80% of Pressure Setting
Weight	0.22 kg [0.48 lb]
Cavity	SDC10-2

### PERFORMANCE CURVES

#### Pressure Override



### MODEL CODE

CP210 - 1 - B - 6S - A - C - 075

#### Seal Option

Code	Seal kit
B-Buna - N	120015
V-Viton	120016

#### Housing

Code	Ports & Material	Housing Model Code
0	No Housing	No Housing
DG3B	AL, 3/8 BSP	SDC10-2-DG-3B
DG4B	AL, 1/2 BSP	SDC10-2-DG-4B
6S	AL, #6 SAE	CP10-2-6S
8S	AL, #8 SAE	CP10-2-8S

\* Aluminum bodies are to be used for pressures less than 210 bar [3000 psi].

\*Additional housings available

#### Adjustment Option

A - Internal  
E - External  
F - Tamper resistant  
K - Knob

#### Pressure Setting

Example:

Code	Bar	Psi
075	52	[750]

Code x10 - Pressure setting in psi (50 psi increments within specified Pressure Range)  
XXX - Standard setting (see Pressure Range for value)

#### Pressure Range

Code	Bar	Psi
A	3.4-28	[50-400]
Standard Setting	17	[250]
B	5.5-55	[80-800]
Standard Setting	28	[400]
C	6.9-97	[100-1400]
Standard Setting	52	[750]
D	34-166	[500-2400]
Standard Setting	103	[1500]