

Relief Valves

CP211-1

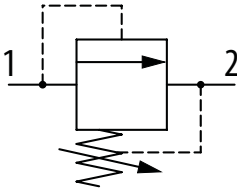
Relief Valve, Direct Acting, Spool Type

210 bar [3000 psi] • 76 l/min [20 US gpm]

DESCRIPTION AND OPERATION

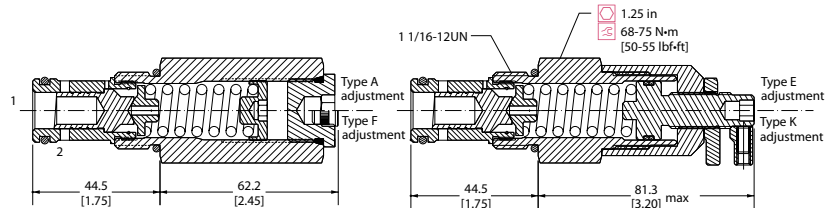
This is a direct acting spool, type relief valve that relieves from port 1 to 2. It has been designed to give stable performance at lower pressure and can be used as a purge relief, bypass filter elements or in applications that require better control.

SCHEMATIC



DIMENSIONS

mm [in]

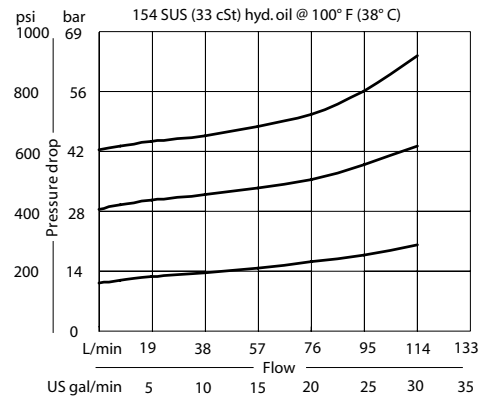


PERFORMANCE DATA

Rated pressure	210 bar [3000 psi]
Rated flow	76 l/min [20 US gpm]
Max Pressure Setting	41 bar [600 psi]
Leakage	82 ml/min [5 in ³ /min] @ 80% of Pressure Setting
Weight	0.41 kg [0.90 lb]
Cavity	CP12-2

PERFORMANCE CURVES

Pressure Override



MODEL CODE

CP211 - 1 - B - 10S - A - C - 040

Seal Option

Code	Seal kit
B-Buna - N	120017
V-Viton	120018

Housing

Code	Ports & Material	Housing Model Code
0	No Housing	No Housing
4B	AL, 1/2 BSP	CP12-2-4B
6B	AL, 3/4 BSP	CP12-2-6B
10S	AL, #10 SAE	CP12-2-10S
12S	AL, #12 SAE	CP12-2-12S

* Aluminum bodies are to be used for pressures less than 210 bar [3000 psi].

*Additional housings available

Pressure Setting

Example:

Code x10 - Pressure setting in psi (50 psi increments within specified Pressure Range)
XXX-Standard setting (see Pressure Range for value)

Code	Bar	Psi
040	28	[400]

Pressure Range

Code	Bar	Psi
A	0-10.3	[0-150]
Standard Setting	7	[100]
B	3.4-34	[50-400]
Standard Setting	21	[300]
C	5.2-41	[80-600]
Standard Setting	28	[400]

Adjustment Option

A - Internal
E - External
F - Tamper resistant
K - Knob