

Relief Valves

CP220-1

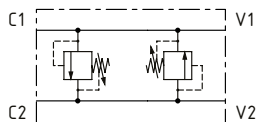
Cross-Over Relief Valve, Line Mounted

250 bar [3600 psi] • 76 l/min [20 US gpm]

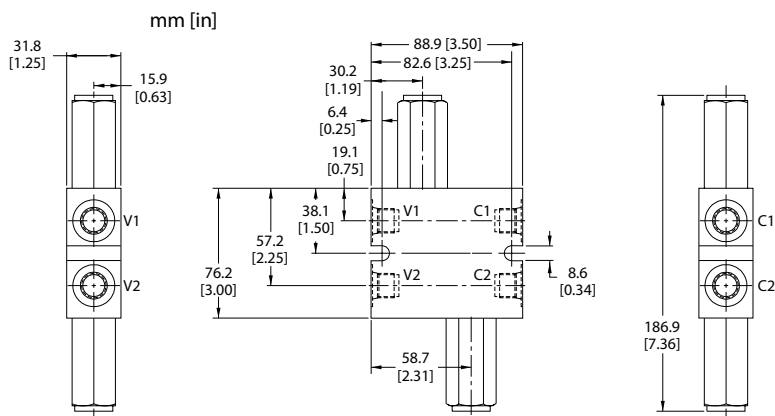
DESCRIPTION AND OPERATION

This valve is an inline cross relief. It uses two CP200-1 differential area relief valves.

SCHEMATIC



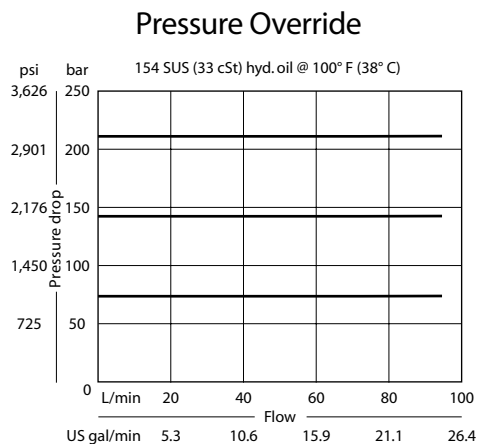
DIMENSIONS



PERFORMANCE DATA

Rated pressure	250 bar [3600 psi]
Rated flow	76 l/min [20 US gpm]
Weight	0.82 kg [1.80 lb]

PERFORMANCE CURVES



MODEL CODE

CP220 - 1 - 8S - B - 0 - A - C - 150

Housing

Code	Ports & Material	Housing Model Code
3B	AL, 3/8 BSP	221743
4B	AL, 1/2 BSP	221744
6S	AL, #6 SAE	220216
8S	AL, #8 SAE	220217

* Aluminum bodies are to be used for pressures less than 210 bar [3000 psi].

* Additional housings available

Seal Option

Code	Seal kit
B-Buna-N	120072
V-Viton	120161

Adjustment Option

A - Internal
E - External
F - Tamper resistant
K - Knob

Pressure Setting

Code x10 - Pressure setting in psi
(50 psi increments within specified Pressure Range)
XXX-Standard setting (see Pressure Range for value)
Example:

Code	Bar	Psi
150	103	[1500]

Pressure Range

Code	Bar	Psi
A	7-55	[100-800]
Standard Setting	28	[400]
B	17-138	[250-2000]
Standard Setting	69	[1000]
C	41-250	[600-3600]
Standard Setting	103	[1500]