

# Relief Valves

## CP221-1

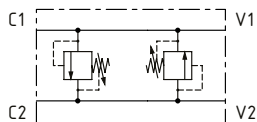
Cross-Over Relief Valve, Line Mounted

250 bar [3600 psi] • 150 l/min [40 US gpm]

### DESCRIPTION AND OPERATION

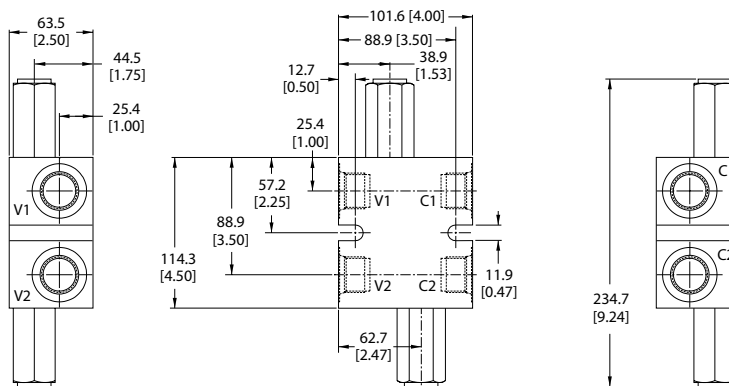
This valve is an inline cross relief. It uses two CP201-1 differential area relief valves.

### SCHEMATIC



### DIMENSIONS

mm [in]

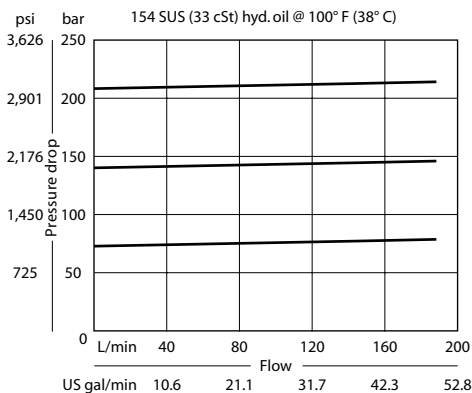


### PERFORMANCE DATA

Rated pressure	250 bar [3600 psi]
Rated flow	150 l/min [40 US gpm]
Weight	2.25 kg [4.95 lb]

### PERFORMANCE CURVES

#### Pressure Override



### MODEL CODE

**CP221 - 1 - 16S - B - 0 - A - C - 150**

#### Housing

Code	Ports & Material	Housing Model Code
6B	AL, 3/4 BSP	221742
8B	AL, 1 BSP	221690
12S	AL, #12 SAE	220223
16S	AL, #16 SAE	220222

\* Aluminum bodies are to be used for pressures less than 210 bar [3000 psi].

\* Additional housings available

#### Seal Option

Code	Seal kit
B-Buna-N	120017
V-Viton	120018

#### Adjustment Option

- A - Internal
- E - External
- F - Tamper resistant
- K - Knob

#### Pressure Setting

Code x10 - Pressure setting in psi  
(50 psi increments within specified Pressure Range)  
XXX-Standard setting (see Pressure Range for value)  
Example:

Code	Bar	Psi
150	103	[1500]

#### Pressure Range

Code	Bar	Psi
A	7-69	[100-1000]
Standard Setting	28	[400]
B	17-172	[250-2500]
Standard Setting	69	[1000]
C	41-250	[500-3600]
Standard Setting	103	[1500]