

Relief Valves

RV08-DR

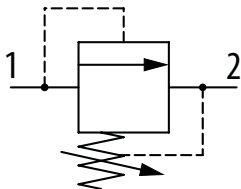
Relief Valve, Direct Acting, Poppet Type with Dampening

250 bar [3600 psi] • 30 l/min [8 US gpm]

DESCRIPTION AND OPERATION

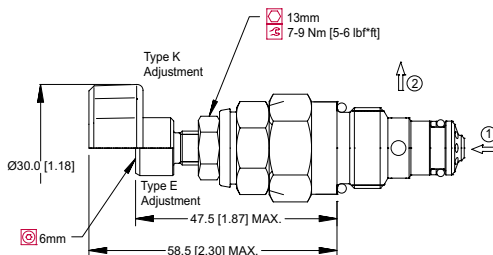
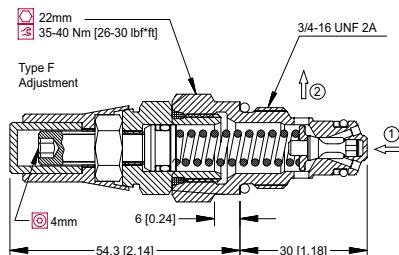
This is a direct acting, poppet type relief valve that relieves from port 1 to 2. It features a highly damped poppet for smooth and stable response. It can be used as a cost-effective main relief or to protect an actuator from over-pressurization.

SCHEMATIC



DIMENSIONS

mm [in]

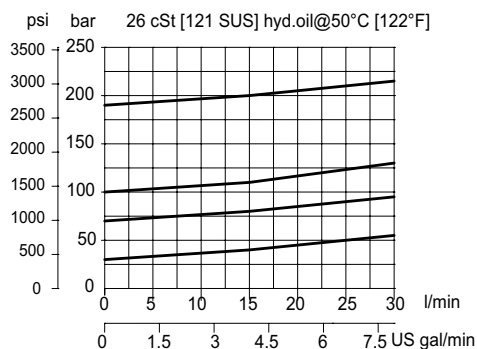


PERFORMANCE DATA

Rated pressure	250 bar [3600 psi]
Rated flow	30 l/min [8 US gpm]
Leakage	10 drops/min @ 80% of Pressure Setting
Weight	0.10 kg [0.22 lb]
Cavity	SDC08-2

PERFORMANCE CURVES

Pressure Override



MODEL CODE

RV08 - DR - 1 - E - 60 - B - 4S

Pressure Range

Code	Bar	Psi
1	20-80	[290-1150]
Standard Setting	Not set	
2	35-160	[510-2300]
Standard Setting	Not set	
3	60-250	[870-3600]
Standard Setting	Not set	

Adjustment Option

E - External
F - Tamper resistant
K - Knob

Pressure Setting

Code-Pressure setting in bar (5 bar increments within specified Pressure Range)
XXX-Standard setting (see Pressure Range for value)

Example:

Code	Bar	Psi
60	60	[870]

Housing

Code	Ports & Material	Housing Model Code
00	No Housing	No Housing
DG2B	Al, 1/4 BSP	SDC08-2-DG-2B
DG3B	Al, 3/8 BSP	SDC08-2-DG-3B
4S	Al, #4 SAE	CP08-2-4S
6S	Al, #6 SAE	CP08-2-6S

* Aluminum bodies are to be used for pressures less than 210 bar [3000 psi].
* Additional housings available

Seal Option

Code	Seal kit
B-Buna - N	354000119
V-Viton	354000219