

Relief Valves

VME 08

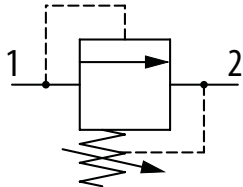
Relief Valve, Direct Acting, Poppet Type with Dampening

315 bar [4600 psi] • 80 l/min [21 US gpm]

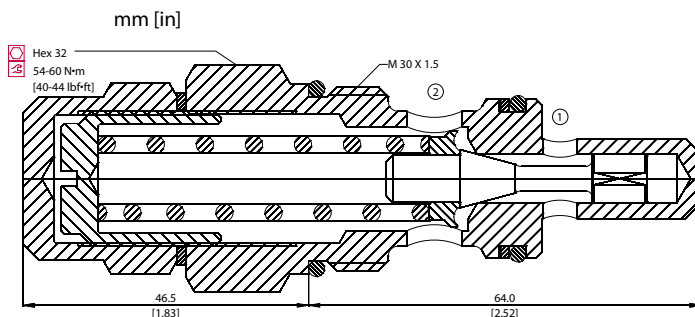
DESCRIPTION AND OPERATION

This is a direct acting, poppet type relief valve that relieves from port 1 to 2. It features a highly damped poppet for smooth and stable response. It can be used as a cost-effective main relief or to protect an actuator from over-pressurization.

SCHEMATIC



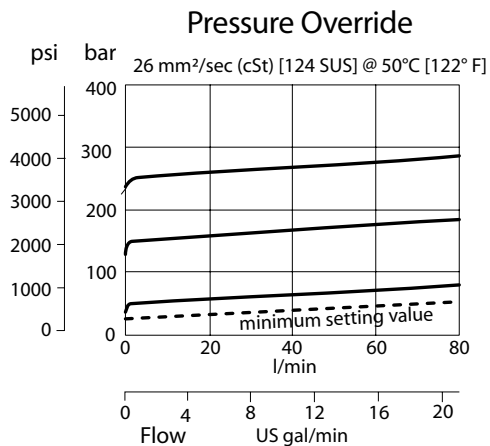
DIMENSIONS



PERFORMANCE DATA

Rated pressure	315 bar [4600 psi]
Rated flow	80 l/min [21 US gpm]
Weight	0.35 kg [0.77 lb]
Cavity	VME08

PERFORMANCE CURVES



MODEL CODE

VME08 - E - 2 - DG3/4 - V - 60

Adjustment Option

EN - External
M - Calibrated Knob

Pressure Range

Code	Bar	Psi
1	25-80	[360-1150]
Standard Setting		Not set
2	35-160	[510-2300]
Standard Setting		Not set
3	70-315	[1015-4600]
Standard Setting		Not set

Pressure Setting

Code - Pressure setting in bar (5 bar increments within specified Pressure Range)
XXX - Standard setting (see Pressure Range for value)
Example:

Code	Bar	Psi
60	60	[870]

Seal Option

Code	Seal kit
Omit-Buna-N	230000140
V-Viton	Consult factory

Housing

Code	Ports & Material	Housing Model Code
00	No Housing	No Housing
DG3/4	AL, 3/4 BSP	VME08-DG-3/4
DG12S	AL, #12 SAE	VME08-DG-12S

* Aluminum bodies are to be used for pressures less than 210 bar [3000 psi].

* Additional housings available