

Sequence and Unloading Valves

1DS100

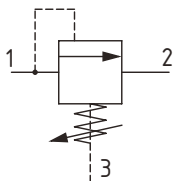
Sequence Valve, Direct Acting, Spool Type, Internal Pilot, External Drain

350 bar [5000 psi] • 150 l/min [40 US gpm]

DESCRIPTION AND OPERATION

This is a direct acting, spool type sequence valve that opens from port 1 to port 2 when the setting is reached, which can be used to sequence operations in a system limiting pressure loss. Connecting port 3 to tank allows this valve to be used as a relief with a consistent setting in applications with high backpressure variation. This valve is ideal for sequencing a secondary operation, while maintaining pressure in the first or as a compensator in a load sense system.

SCHEMATIC

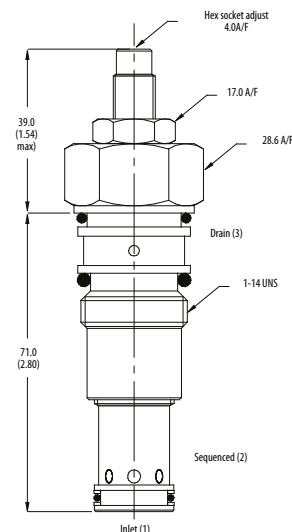


PERFORMANCE DATA

Rated pressure	350 bar [5000 psi]
Rated flow	150 l/min [40 US gpm]
Max setting	40 bar [580 psi]
Leakage	25 ml/min nominal
Weight	0.28 kg [0.62 lb]
Cavity	A880

DIMENSIONS

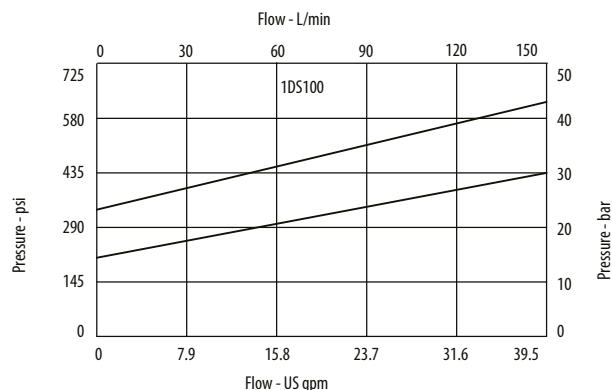
mm [in]



Installation torque
60 Nm [44 ft. lbs]

PERFORMANCE CURVES

Pressure Override



MODEL CODE

1DS145 - P - 3W - 2 - S - 377 - 20

Basic Code

1DS100 - No housing
1DS145 - Cartridge and housing

Adjustment Option

P - External
R - Knob
G - Tamper Resistant

Housing

Code	Ports	Housing Model Code	
		Aluminum	Steel
Omit	No Housing		
4W	1/2" BSP, 1/4" BSP Drain	B4821	B4527
6W	3/4" BSP, 1/4" BSP Drain	B5466	B4403
6T	3/8" SAE, 1/4" SAE Drain	B10793	
8T	1/2" SAE, 1/4" SAE Drain	B6584	
12T	3/4" SAE, 1/4" SAE Drain	B7883	B11379

* Aluminum bodies are to be used for pressures less than 210 bar [3000 psi].

* Additional housings available

Pressure Setting

Code- Pressure setting in bar (5 bar increments within specified Pressure Range)
XXX-Standard setting (see Pressure Range for value)
Example:

Code	Bar	Psi
20	20	[290]

Housing Material

Omit - Aluminum/No housing
377 - Steel

Seal Option

Code	Seal Kit
S-Buna-N	SK177
SV-Viton	SK177V

Pressure Range

Code	Bar	Psi
2	2-25	[29-360]
Standard Setting	20	[290]
4	2-40	[30-580]
Standard Setting	28	[400]

Setting made at 4.8 l/min