

Sequence and Unloading Valves

1PS100

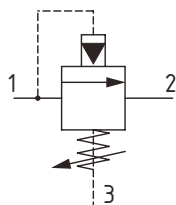
Sequence Valve, Pilot Operated, Spool Type, Internal Pilot, External Drain

350 bar [5000 psi] • 150 l/min [40 US gpm]

DESCRIPTION AND OPERATION

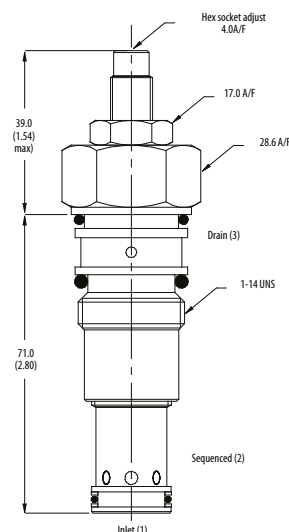
This is a pilot operated, spool type sequence valve that opens from port 1 to port 2 when the setting is reached. This is ideal for sequencing a secondary operation while maintaining pressure in the primary operation, limiting pressure loss with constant or varying flows.

SCHEMATIC



DIMENSIONS

mm [in]

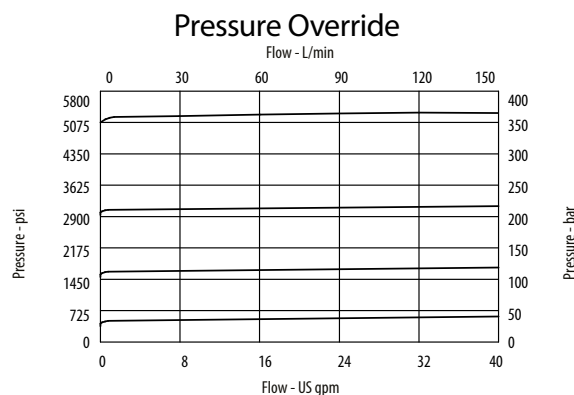


Installation torque
60 Nm [44 ft. lbs]

PERFORMANCE DATA

Rated pressure	350 bar [5000 psi]
Rated flow	150 l/min [40 US gpm]
Leakage	35 ml/min @ 280 bar [4060 psi]
Weight	0.17 kg [0.37 lb]
Cavity	A880

PERFORMANCE CURVES



MODEL CODE

1PS145 - P - 3W - 35 - S - 377 - 60

Basic Code
1PS100 - No housing
1PS145 - Cartridge and Housing

Adjustment Option
P - External
R - Knob
G - Tamper Resistant

Housing

Code	Ports	Housing Model Code			
		Aluminum	Steel	Aluminum 1PS155	Steel 1PS155
Omit	No Housing				
4W	1/2" BSP, 1/4" BSP Drain Port	B4821	B4527		
6W	3/4" BSP, 1/4" BSP Drain Port	B5466	B4403	BXP23867-6WS	BXP23867-6WS377
6T	3/8" SAE, 1/4" SAE Drain Port	B10793			
8T	1/2" SAE, 1/4" SAE Drain Port	B6584			
12T	3/4" SAE, 1/4" SAE Drain Port	B7883	B11379		

* Aluminum bodies are to be used for pressures less than 210 bar [3000 psi].
* Additional housings available

Pressure Setting
Code - Pressure setting in bar (5 bar increments within specified Pressure Range)
XXX - Standard setting (see Pressure Range for value)
Example:

Code	Bar	Psi
60	60	[870]

Housing Material
Omit - Aluminum/No housing
377 - Steel

Seal Option

Code	Seal Kit
S-Buna-N	SK177
SV-Viton	SK177V

Pressure Range

Code	Bar	Psi
7	2-70	[29-1015]
Standard Setting	35	[510]
20	10-210	[150-3000]
Standard Setting	100	[1450]
35	50-350	[725-5000]
Standard Setting	280	[4060]

Setting made at 14 l/min