

# Sequence and Unloading Valves

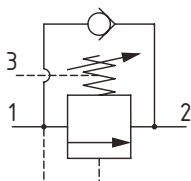
## 1PSC30

Sequence Valve, Direct Acting, Poppet Type with Reverse Free Flow, Internal Pilot, External Drain  
**350 bar [5000 psi] • 30 l/min [8 US gpm]**

### DESCRIPTION AND OPERATION

This is a direct acting, poppet type sequence valve with a reverse flow check. It opens from port 1 to port 2 when the set pressure is reached and free flows from port 2 to 1. It can be used to sequence operations in a system or in a service line after a directional valve, where free flow is necessary in the reverse direction.

### SCHEMATIC

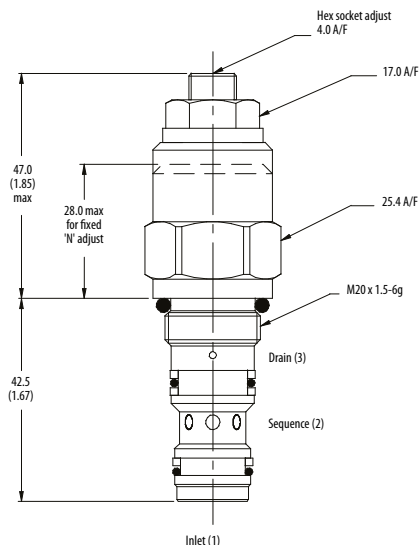


### PERFORMANCE DATA

<b>Rated pressure</b>	<b>350 bar [5000 psi]</b>
<b>Rated flow</b>	<b>30 l/min [8 US gpm]</b>
<b>Leakage</b>	0.3 ml/min nominal [5 drops/min]
<b>Weight</b>	0.15 kg [0.33 lb]
<b>Cavity</b>	A6610

### DIMENSIONS

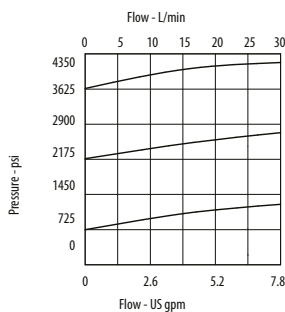
mm [in]



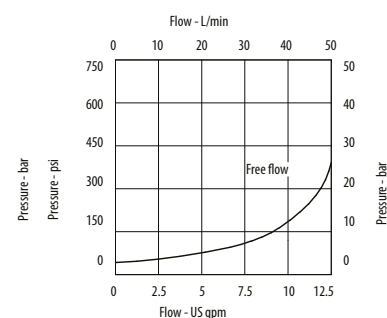
**Installation torque**  
 45 Nm [33 ft. lbs]

### PERFORMANCE CURVES

Pressure Override



Pressure Drop



### MODEL CODE

**1PSC35 - F - 3W - 20 - S - 377 - 60**

#### Basic Code

1PSC30 - No housing  
 1PSC35- Cartridge and Housing

#### Adjustment Option

F - External  
 N - Non-adjustable option, contact technical support.

#### Housing

Code	Ports	Housing Model Code	
		Aluminum	Steel
Omit	No Housing		
3W	3/8" BSP Valve & Cyl Port. 1/4" BSP Pilot Port	B6743	B12823
6T	3/8" SAE Valve & Cyl Port. 1/4" SAE Pilot Port	B10536	
8T	1/2" SAE Valve & Cyl Port. 1/4" SAE Pilot Port	B7884	B11811

\* Aluminum bodies are to be used for pressures less than 210 bar [3000 psi].

\* Additional housings available

#### Pressure Setting

Code- Pressure setting in bar (5 bar increments within specified Pressure Range)  
 XXX-Standard setting (see Pressure Range for value)  
 Example:

Code	Bar	Psi
60	60	[870]

#### Housing Material

Omit - Aluminum/No housing  
 377 - Steel

#### Seal Option

Code	Seal Kit
S-Buna-N	SK395
SV-Viton	SK395V

#### Pressure Range

Code	Bar	Psi
10	10-100	[145-1450]
Standard Setting	70	[1015]
20	60-210	[870-3000]
Standard Setting	100	[1450]
35	70-350	[1015-5000]
Standard Setting	210	[3000]

Setting made at 4.8 l/min