

Sequence and Unloading Valves

1PSC100

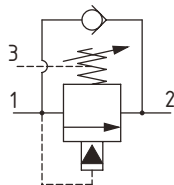
Sequence Valve, Pilot Operated, Poppet Type with Reverse Free Flow, Internal Pilot, External Drain

350 bar [5000 psi] • 150 l/min [40 US gpm]

DESCRIPTION AND OPERATION

This is a pilot operated, poppet type sequence valve with a reverse flow check. It opens from port 1 to port 2 when the set pressure is reached and free flows from port 2 to 1. It can be used to sequence operations in a system or in a service line after a directional valve, where free flow is necessary in the reverse direction.

SCHEMATIC

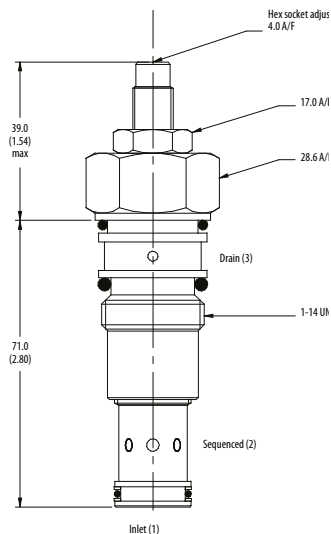


PERFORMANCE DATA

Rated pressure	350 bar [5000 psi]
Rated flow	150 l/min [40 US gpm]
Leakage	35 ml/min @ 280 bar [4060 psi]
Weight	0.17 kg [0.37 lb]
Cavity	A880

DIMENSIONS

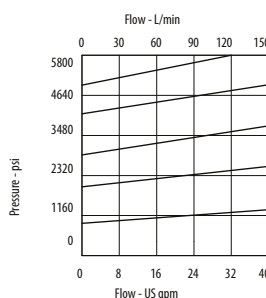
mm [in]



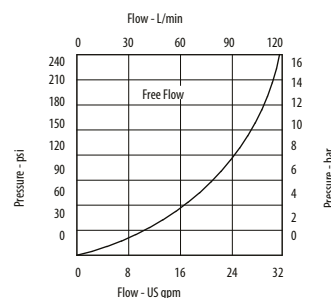
Installation torque
60 Nm [44 ft. lbs]

PERFORMANCE CURVES

Pressure Override



Pressure Drop



MODEL CODE

1PSC145 - P - 3W - 35 - S - 377 - 60

Basic Code

1PSC100 - No housing
1PSC145 - Cartridge and Housing

Adjustment Option

P - External
R - Knob
G - Tamper Resistant

Housing

Code	Ports	Housing Model Code	
		Aluminum	Steel
Omit	No Housing		
3W	3/8" BSP 1/4" BSP Drain Ports		
4W	1/2" BSP 1/4" BSP Drain Ports	B4821	B4527
6W	3/4" BSP 1/4" BSP Drain Ports	B5466	B4403
6T	3/8" SAE 1/4" SAE Drain Ports	B10793	
8T	1/2" SAE 1/4" SAE Drain Ports	B6584	
12T	3/4" SAE 1/4" SAE Drain Ports	B7883	B11379

Housing Material

Omit - Aluminum/No housing
377 - Steel

Seal Option

Code	Seal Kit
S-Buna-N	SK177
SV-Viton	SK177V

Pressure Range

Code	Bar	Psi
7	2-70	[29-1015]
Standard Setting	35	[510]
20	10-210	[150-3000]
Standard Setting	100	[1450]
35	50-350	[725-5000]
Standard Setting	280	[4060]

Setting made at 14 l/min

Pressure Setting

Code - Pressure setting in bar (5 bar increments within specified Pressure Range)
XXX - Standard setting (see Pressure Range for value)
Example:

Code	Bar	Psi
60	60	[870]

* Aluminum bodies are to be used for pressures less than 210 bar [3000 psi].

* Additional housings available