

# Sequence and Unloading Valves

## 1PUL200

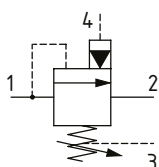
Sequence Valve, Pilot Operated, Poppet Type with Reverse Free Flow, Internal Pilot, External Drain

350 bar [5000 psi] • 200 l/min [52 US gpm]

### DESCRIPTION AND OPERATION

This is a pilot operated, spool type unloading valve. Normally used in conjunction with a check valve, the valve remains closed from port 1 to 2 until the set pressure is reached. Pressure sensed downstream of the check valve at port 3 will pilot the valve open, allowing the pressure at port 1 unload to open to port 2. When the pressure in port 3 falls to 85% of the setting the valve will close and the pressure in port 1 will rise. It has a drain port 4 which allows the use of flow at port 2 in a secondary function. This valve can be used to dump the pump flow at minimum pressure in an accumulator system or in a two-pump unloading circuit.

### SCHEMATIC



### PERFORMANCE DATA

Rated pressure	350 bar [5000 psi]
Rated flow	200 l/min [52 US gpm]
Leakage	35 ml/min nominal
Pressure Ratio	85-90%
Weight	0.74 kg [1.63 lb]
Cavity	A3145

### MODEL CODE

1PUL250 - P - 8W - 35 - S - 377 - 60

**Basic Code**

1PUL200 - No housing  
1PUL250 - Cartridge and Housing

**Adjustment Option**

P - External  
G - Tamper Resistant

**Housing**

Code	Ports	Housing Model Code	
		Aluminium	Steel
Omit	No Housing		
8W	1" BSP 1/4" BSP Drain Port	BXP23466-8W-S	BXP23466-8W-S-377
16T	1" SAE 1/4" SAE Drain Port	BXP23466-16T-S	BXP23466-16-S-377

\* Aluminium bodies are to be used for pressures less than 210 bar [3000 psi].  
\* Additional housings available

**Pressure Setting**

Code - Pressure setting in bar (5 bar increments within specified Pressure Range)  
XXX - Standard setting (see Pressure Range for value)  
Example:

Code	Bar	Psi
60	60	[870]

**Housing Material**

Omit - Aluminum/No Housing  
377 - Steel

**Seal Option**

Code	Seal Kit - 1PUL200	Seal Kit - 1PUL250
S	Buna-N SK670	SK452
SV	Viton SK670V	SK452V

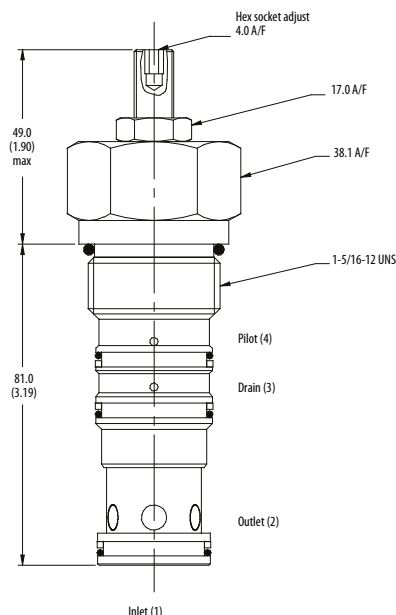
**Pressure Range**

Code	Bar	Psi
20	30-210	[435-3000]
Standard Setting	100	[1450]
35	150-350	[2200-5000]
Standard Setting	200	[2900]

Setting made at 4.8 l/min

### DIMENSIONS

mm [in]



Installation torque  
100 Nm [73 ft. lbs]

### PERFORMANCE CURVES

