

Sequence and Unloading Valves

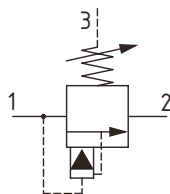
1UPS100

Kick-Down Sequence Valve, Pilot Operated, Spool Type, Internal Pilot, External Drain
350 bar [5000 psi] • 150 l/min [40 US gpm]

DESCRIPTION AND OPERATION

This is a pilot operated, spool type sequence valve that opens from port 1 to port 2 when the setting is reached. It then automatically vents the main spool, causing the inlet pressure in port 1 to fall to the pressure in port 2. Sometimes known as a 'kick-down' valve, it can be used to sequence operations in a system limiting pressure loss, where the pressure in the second operation is much lower than the first.

SCHEMATIC



PERFORMANCE DATA

Rated pressure	350 bar [5000 psi]
Rated flow	150 l/min [40 US gpm]
Leakage	100 ml/min nominal
Weight	0.17 kg [0.37 lb]
Cavity	A880

MODEL CODE

1UPS145 - P - 3W - 35 - S - 377 - 60

Basic Code

1UPS100 - No housing
 1UPS145 - Cartridge and housing
 1UPS155 - Cartridge and dual housing

Adjustment Option

P - External
 R - Knob
 G - Tamper Resistant

Housing

Code	Ports	Housing Model Code	
		Aluminum	Steel
Omit	No housing		
4W	1/2" BSP 1/4" BSP Drain Ports	B4821	B4527
6W	3/4" BSP 1/4" BSP Drain Ports	B5466	B4403
6T	3/8" SAE 1/4" SAE Drain Ports	B10793	
8T	1/2" SAE 1/4" SAE Drain Ports	B6584	
12T	3/4" SAE 1/4" SAE Drain Ports	B7883	B11379

* Aluminum bodies are to be used for pressures less than 210 bar [3000 psi].
 * Additional housings available

Pressure Setting

Code - Pressure setting in bar (5 bar increments within specified Pressure Range)
 XXX - Standard setting (see Pressure Range for value)
 Example:

Code	Bar	Psi
60	60	[870]

Housing Material

Omit - Aluminum/No housing
 377 - Steel

Seal Option

Code	Seal Kit
S-Buna-N	SK177
SV-Viton	SK177V

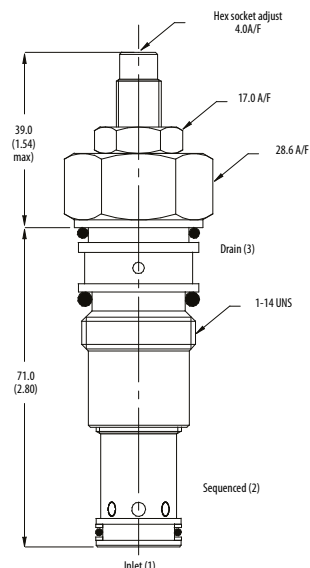
Pressure Range

Code	Bar	Psi
20	10-210	[100]
Standard Setting	100	[145-3000]
35	30-350	[210]
Standard Setting	210	[435-5000]

Setting made at 14 l/min

DIMENSIONS

mm [in]



Installation torque
 60 Nm [44 ft. lbs]

PERFORMANCE CURVES

