

Sequence and Unloading Valves

ADV1-16

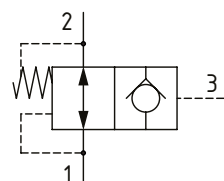
Accumulator Discharge Valve, Normally Open, Poppet Type, Hydraulic Pilot, Internal Drain

210 bar [3000 psi] • 30 l/min [8 US gpm]

DESCRIPTION AND OPERATION

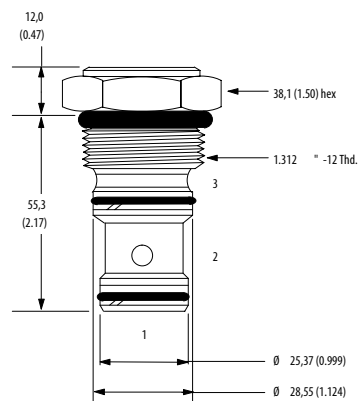
This valve is a normally open, restricted, pilot to close poppet valve. In the normal position, flow can pass from port 1 to 2 or port 2 to 1. When pressure is applied to port 3 the valve will close, preventing oil from passing from port 1 to 2. Pressure in port 2 will open the valve, allowing flow to pass from port 2 to 1. The ideal application for this valve is as an accumulator discharge valve. When the power is removed and the pilot pressure reduces to zero, the accumulator pressure can be discharged through this valve in a controlled manner.

SCHEMATIC



DIMENSIONS

mm [in]

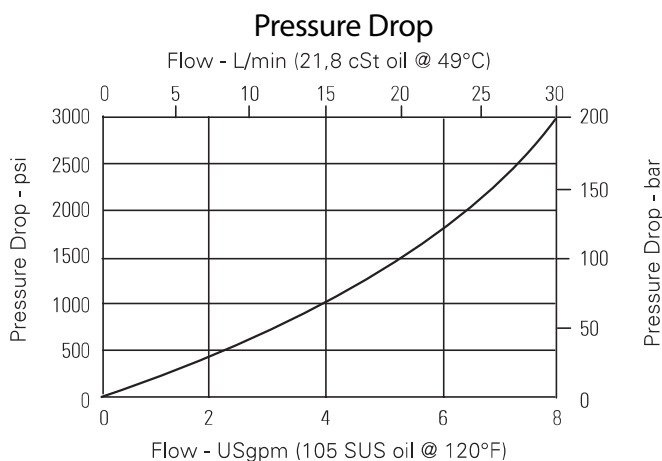


Installation torque
108-122 Nm [80-90 ft. lbs]

PERFORMANCE DATA

Rated pressure	210 bar [3000 psi]
Rated flow	30 l/min [8 US gpm]
Minimum pilot pressure	4 bar [60 psi]
Weight	0.28 kg [0.62 lb]
Cavity	SDC16-3S

PERFORMANCE CURVES



MODEL CODE

ADV1 - 16 - V - 6B - 100

Seal Option

Code	Seal kit
Omit-Buna - N	565812
V-Viton	889611

Pilot Ratio

100-100:1

Housing

Code	Ports	Aluminum standard duty	Aluminum heavy duty
0	No Housing		
6B	3/4" BSP	02-175471	
12T	#12 SAE	566414	
4G	1/2" BSP		02-160676
6G	3/4" BSP		876726
10H	#10 SAE		876725
12H	#12 SAE		876727

* Aluminum bodies are to be used for pressures less than 210 bar [3000 psi].

* Additional housings available