

Sequence and Unloading Valves

PSV1-10

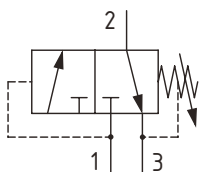
Sequence Valve, Normally Closed, Spool Type, Internal Pilot, Internal Drain

210 bar [3000 psi] • 23 l/min [6 US gpm]

DESCRIPTION AND OPERATION

This is a three ported sequence valve, where pressure sensed at port 1 will shift valve and open port 1 to port 2. Port 3 should always be referenced to tank. This is ideal for use as a brake release valve in a transmission circuit.

SCHEMATIC



PERFORMANCE DATA

Rated pressure	210 bar [3000 psi]
Rated flow	23 l/min [6 US gpm]
Leakage	82 ml/min [5 l ³ /min] @ 210 bar [3000 psi]
Weight	0.24 kg [0.53 lb]
Cavity	SDC10-3

MODEL CODE

PSV1 - 10 - V - C - 3B - 12 - 10

Seal Option

Code	Seal Kit
Omit -Buna - N	565804
V -Viton	889599

Adjustment Option

C - Tamper Resistant
 F - Fixed
 I - Internal
 K - Knob
 S - External

Housing

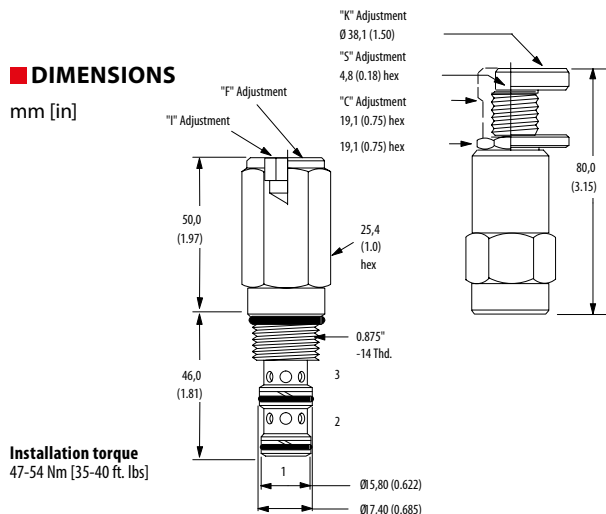
Code	Ports	Housing Model Code	
		Aluminum Standard Duty	Aluminum Heavy Duty
0	No Housing		
3B	3/8" BSP	02-173358	-
6T	#6 SAE	566162	-
2G	1/4" BSP	-	876705
3G	3/8" BSP	-	876714
6H	#6 SAE	-	876704
8H	#8 SAE	-	876711

* Aluminum bodies are to be used for pressures less than 210 bar [3000 psi].

* Additional housings available

DIMENSIONS

mm [in]



PERFORMANCE CURVES

