

Sequence and Unloading Valves

AUV 06

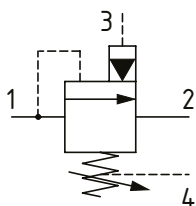
Unloading Valve, Pilot Operated, Spool Type, Hydraulic Pilot, External Drain

250 bar [3600 psi] • 50 l/min [13 US gpm]

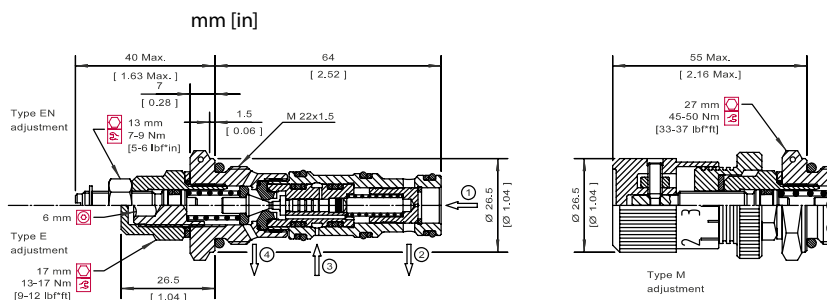
DESCRIPTION AND OPERATION

This is a pilot operated, spool type unloading valve. Normally used in conjunction with a check valve, the valve remains closed from port 1 to 2 until the set pressure is reached. Pressure sensed downstream of the check valve at port 3 will pilot the valve open, allowing the pressure at port 1 unload to tank (port 2) at minimum pressure. When the pressure in port 3 falls to 85% of the setting, the valve will close and the pressure in port 1 will rise. This valve can be used to dump the pump flow at minimum pressure in an accumulator system or in a two-pump unloading circuit.

SCHEMATIC



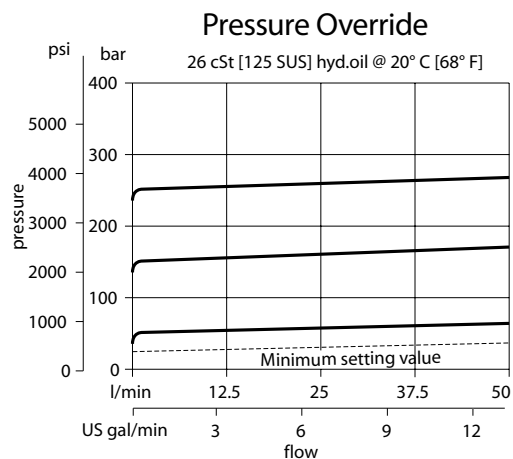
DIMENSIONS



PERFORMANCE DATA

Rated pressure	250 bar [3600 psi]
Rated flow @ 7 bar [100 psi]	50 l/min [13 US gpm]
Weight	0.22 kg [0.49 lb]
Cavity	NCS06/4

PERFORMANCE CURVES



MODEL CODE

AUV 06 - EN - 1 - A - L3/8 - V - 60

Adjustment Option

E - Internal
EN - External
M - Calibrated Knob

Pressure Range

Code	Bar	Psi
1	10-70	[145-1015]
Standard Setting		Not set
2	30-140	[435-2030]
Standard Setting		Not set
3	70-210	[1015-3000]
Standard Setting		Not set

Pressure Ratio

A - 85%

Pressure Setting

Code-Pressure setting in bar (5 bar increments within specified Pressure Range)

XXX-Standard setting (see Pressure Range for value)
Example:

Code	Bar	Psi
60	60	[870]

Seal Option

Code	Seal kit
Omit-Buna-N	230000080
V-Viton	230000350

Housing

Code	Ports & Material	Housing Model Code
00	No Housing	No Housing
L3/8	AL, 3/8 BSP	NCS06/4-L-3/8
L1/2	AL, 1/2 BSP	NCS06/4-L-1/2
L6S	AL, #6 SAE	NCS06/4-L-6S
L8S	AL, #8 SAE	NCS06/4-L-8S

* Aluminum bodies are to be used for pressures less than 210 bar [3000 psi].

* Additional housings available