

Sequence and Unloading Valves

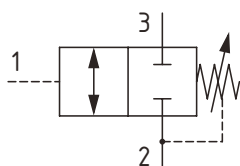
CP240-2

Sequence Valve, Normally Closed, Spool Type, Hydraulic Pilot, Internal Drain
210 bar [3000 psi] • 35 l/min [9 US gpm]

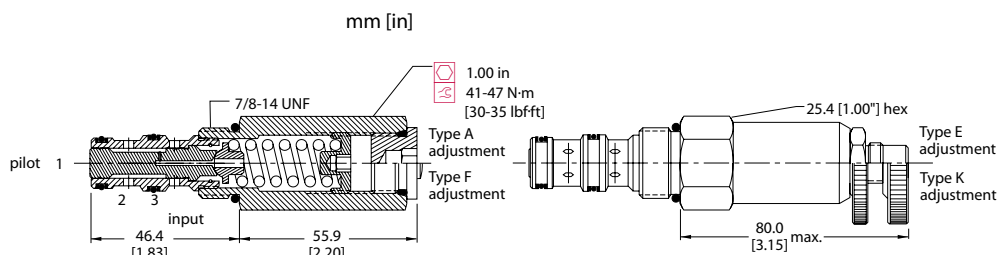
DESCRIPTION AND OPERATION

This is a hydraulically pilot operated spool valve, normally closed from port 3 to 2 with the spring chamber referenced to port 2. When the pilot pressure on port 1 reaches the setting, the valve will begin to open port 3 to 2. Port 2 should always be connected to tank. This is ideal for sensing pressure in a remote area of a circuit to sequence another operation.

SCHEMATIC



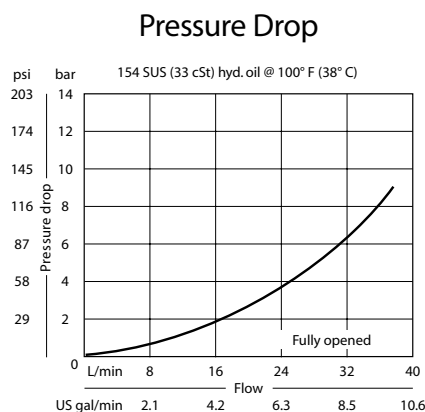
DIMENSIONS



PERFORMANCE DATA

Rated pressure	210 bar [3000 psi]
Rated flow @ 7 bar [100 psi]	35 l/min [9 US gpm]
Weight	0.24 kg [0.52 lb]
Cavity	SDC10-3

PERFORMANCE CURVES



MODEL CODE

CP240 - 2 - B - 6S - A - C - 100

Seal Option

Code	Seal kit
B -Buna - N	120009
V -Viton	120010

Housing

Code	Ports & Material	Housing Model Code
0	No Housing	No Housing
SE3B	AL, 3/8 BSP	SDC10-3-SE-3B
SE4B	AL, 1/2 BSP	SDC10-3-SE-4B
6S	AL, #6 SAE	CP10-3-6S
8S	AL, #8 SAE	CP10-3-8S

* Aluminum bodies are to be used for pressures less than 210 bar [3000 psi].
 * Additional housings available

Adjustment Option

A - Internal
E - External
F - Tamper Resistant
K - Knob

Pressure Setting

Code x10 - Pressure setting in psi (10 psi increments within specified Pressure Range)
XXX - Standard setting (see Pressure Range for value)

Example:

Code	Bar	Psi
100	69	[1000]

Pressure Range

Code	Bar	Psi
A	4-28	[50-400]
Standard Setting	17	[250]
B	5-55	[75-800]
Standard Setting	28	[400]
C	7-97	[100-1400]
Standard Setting	69	[1000]
D	34-166	[500-2400]
Standard Setting	103	[1500]