

# Sequence and Unloading Valves

## CP240-30

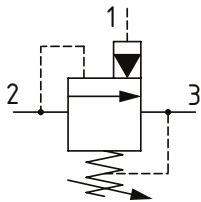
Unloading Valve, Direct Acting, Poppet Type, Hydraulic Pilot, Internal Drain

240 bar [3500 psi] • 4 l/min [1 US gpm]

### DESCRIPTION AND OPERATION

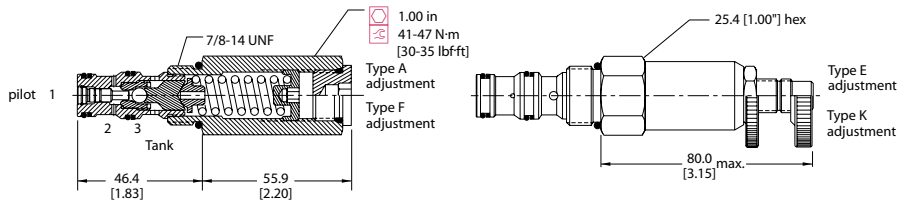
This is a low flow pilot valve for use in unloading circuits. The valve remains closed between port 2 and 3 until the setting is achieved on port 2, and the valve opens as a relief valve. Normally used in conjunction with a check valve, pressure sensed on port 1 downstream of the check valve keeps the valve open until the pressure drops to a pre-determined percentage of the setting (75%, 80%, or 85%). When the pressure falls, the valve will close allowing pressure to rise again. This valve can be used with a logic element in an accumulator system to dump the pump flow at minimum pressure or in a two-pump unloading circuit.

### SCHEMATIC



### DIMENSIONS

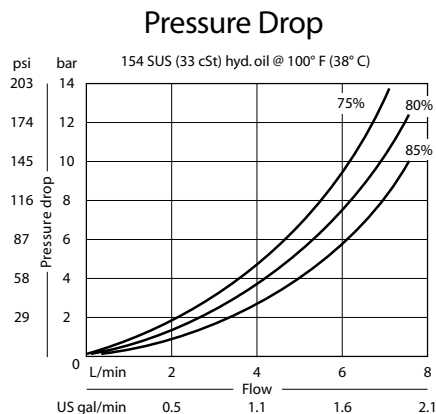
mm [in]



### PERFORMANCE DATA

Rated pressure	240 bar [3500 psi]
Rated flow @ 7 bar [100 psi]	4 l/min [1 US gpm]
Weight	0.24 kg [0.53 lb]
Cavity	SDC10-3

### PERFORMANCE CURVES



### MODEL CODE

CP240 - 30 - B - 6S - A - B - 75 - 150

#### Seal Option

Code	Seal kit
B-Buna-N	120027
V-Viton	120028

#### Housing

Code	Ports & Material	Housing Model Code
0	No Housing	No Housing
SE3B	AL, 3/8 BSP	SDC10-3-SE-3B
SE4B	AL, 1/2 BSP	SDC10-3-SE-4B
6S	AL, #6 SAE	CP10-2-6S
8S	AL, #8 SAE	CP10-2-8S

\* Aluminum bodies are to be used for pressures less than 210 bar [3000 psi].  
\* Additional housings available

#### Adjustment Option

A - Internal  
E - External  
F - Tamper Resistant  
K - Knob

#### Pressure Setting

Code x10 - Pressure setting in psi (50 psi increments within specified Pressure Range)  
XXX-Standard setting (see Pressure Range for value).  
Example:

Code	Bar	Psi
150	103	[1500]

#### Pressure Ratio

75 - 75%  
80 - 80%  
85 - 85%

#### Pressure Range

Code	Bar	Psi
A	28-103	[400-1500]
Standard Setting	69	[1000]
B	62-240	[900-3500]
Standard Setting	103	[1500]