

Sequence and Unloading Valves

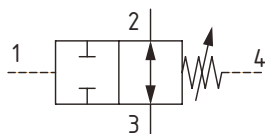
CP240-5

Sequence Valve, Normally Open, Spool Type, Hydraulic Pilot, External Drain
210 bar [3000 psi] • 25 l/min [7 US gpm]

DESCRIPTION AND OPERATION

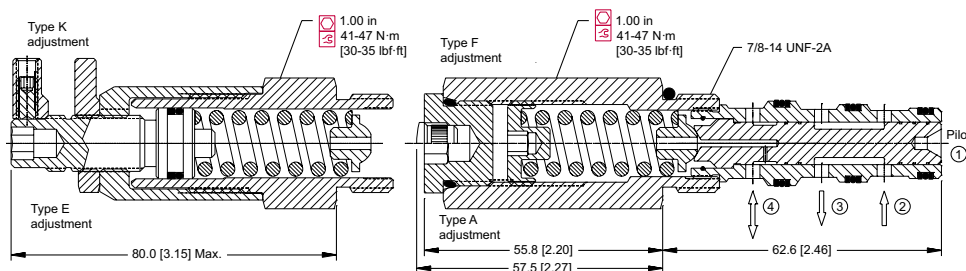
This is a hydraulically pilot operated spool valve, normally open from port 2 to 3 with port 4 as a drain port connected to tank. When the pilot pressure on port 1 reaches the setting, the valve will begin to close port 2 to 3. This is ideal for sensing pressure in a remote area of a circuit to sequence another operation.

SCHEMATIC



DIMENSIONS

mm [in]

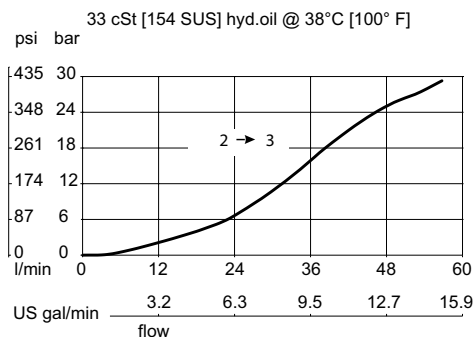


PERFORMANCE DATA

Rated pressure	210 bar [3000 psi]
Rated flow @ 7 bar [100 psi]	25 l/min [7 US gpm]
Weight	0.26 kg [0.57 lb]
Cavity	SDC10-4

PERFORMANCE CURVES

Pressure Drop



MODEL CODE

CP240 - 5 - V - L3B - A - B - 075

Seal Option

Code	Seal kit
B -Buna - N	120023
V -Viton	120024

Housing

Code	Ports & Material	Housing Model Code
0	No Housing	No Housing
L3B	AL, 3/8 BSP	SDC10-4-L-3B
L4B	AL, 1/2 BSP	SDC10-4-L-4B
6S	AL, #6 SAE	SDC10-4-6S
8S	AL, #8 SAE	SDC10-4-8S

* Aluminum bodies are to be used for pressures less than 210 bar [3000 psi].

* Additional housings available

Adjustment Option

A - Internal
E - External
F - Tamper Resistant
K - Knob

Pressure Setting

Code x10 - Pressure setting in psi (50 psi increments within specified Pressure Range)
XXX-Standard setting (see Pressure Range for value)
 Example:

Code	Bar	Psi
075	52	[750]

Pressure Range

Code	Bar	Psi
A	3.4-27.6	[50-400]
Standard Setting	17	[250]
B	4.8-55.2	[70-800]
Standard Setting	28	[400]
C	6.9-96.5	[100-1400]
Standard Setting	69	[1000]
D	34.5-165.5	[500-2400]
Standard Setting	103	[1500]