

Sequence and Unloading Valves

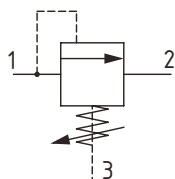
CP240-8

Sequence Valve, Direct Acting, Spool Type, Internal Pilot, External Drain
210 bar [3000 psi] • 55 l/min [14 US gpm]

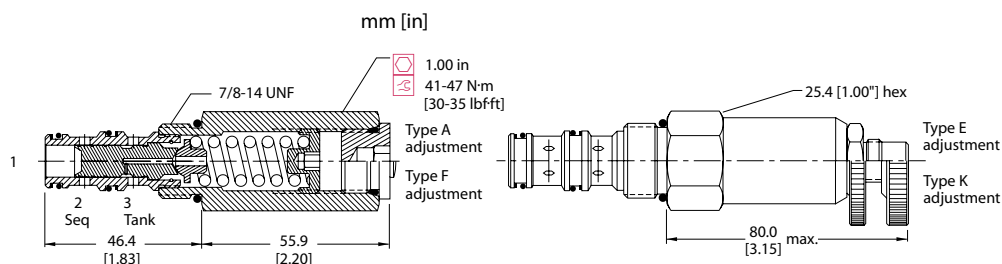
DESCRIPTION AND OPERATION

This is a direct acting, spool type sequence valve that opens from port 1 to port 2 when the setting is reached, which can be used to sequence operations in a system limiting pressure loss. Connecting port 3 to tank allows this valve to be used as a relief with a consistent setting in applications with high backpressure variation. This valve is ideal for sequencing a secondary operation, while maintaining pressure in the first or as a compensator in a load sense system.

SCHEMATIC



DIMENSIONS

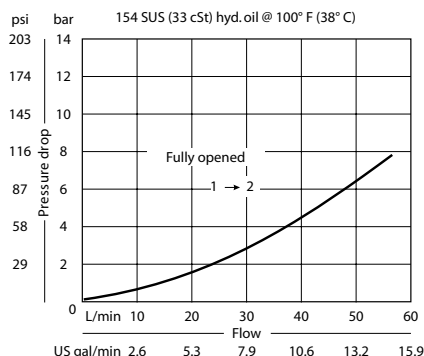


PERFORMANCE DATA

Rated pressure	210 bar [3000 psi]
Rated flow @ 7 bar [100 psi]	55 l/min [14 US gpm]
Weight	0.26 kg [0.57 lb]
Cavity	SDC10-3

PERFORMANCE CURVES

Pressure Drop



MODEL CODE

CP240 - 8 - B - 6S - A - C - 100

Seal Option

Code	Seal kit
B -Buna - N	120027
V -Viton	120028

Housing

Code	Ports & Material	Housing Model Code
0	No Housing	No Housing
SE3B	AL, 3/8 BSP	SDC10-3-SE-3B
SE4B	AL, 1/2 BSP	SDC10-3-SE-4B
6S	AL, #6 SAE	CP10-3-6S
8S	AL, #8 SAE	CP10-3-8S

* Aluminum bodies are to be used for pressures less than 210 bar [3000 psi].

* Additional housings available

Adjustment Option

A - Internal
E - External
F - Tamper Resistant
K - Knob

Pressure Setting

Code x10 - Pressure setting in psi (50 psi increments within specified Pressure Range)
XXX - Standard setting (see Pressure Range for value)
 Example:

Code	Bar	Psi
100	69	[1000]

Pressure Range

Code	Bar	Psi
A	4-28	[50-400]
Standard Setting	17	[250]
B	5-55	[75-800]
Standard Setting	28	[400]
C	7-97	[100-1400]
Standard Setting	69	[1000]
D	34-166	[500-2400]
Standard Setting	103	[1500]