

Sequence and Unloading Valves

CP241-21

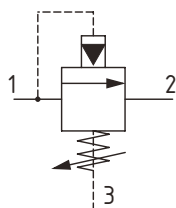
Sequence Valve, Pilot Operated, Spool Type, Internal Pilot, External Drain

350 bar [5000 psi] • 76 l/min [20 US gpm]

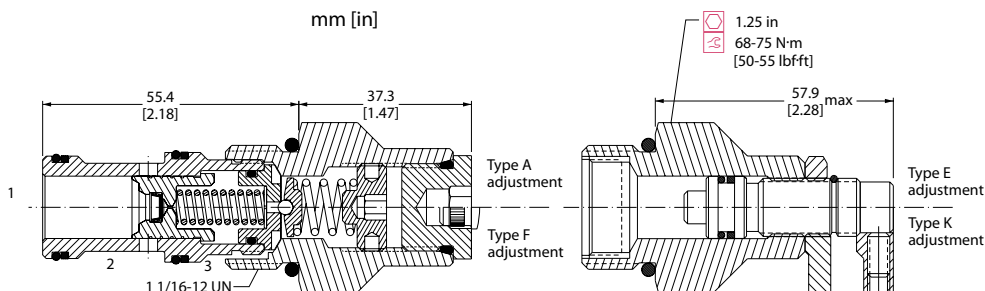
DESCRIPTION AND OPERATION

This is a pilot operated, spool type sequence valve that opens from port 1 to port 2 when the setting is reached. This is ideal for sequencing a secondary operation while maintaining pressure in the primary operation, limiting pressure loss with constant or varying flows.

SCHEMATIC



DIMENSIONS

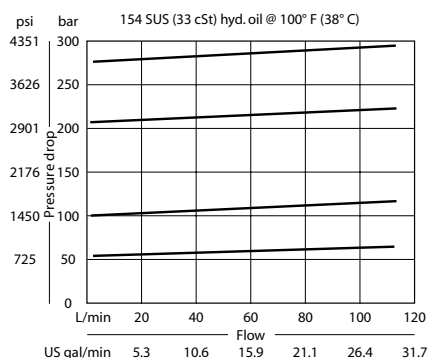


PERFORMANCE DATA

Rated pressure	350 bar [5000 psi]
Rated flow @ 7 bar [100 psi]	76 l/min [20 US gpm]
Weight	0.28 kg [0.62 lb]
Cavity	CP12-3S

PERFORMANCE CURVES

Pressure Override



MODEL CODE

CP241 - 21 - B - 6S - A - C - 150

Seal Option

Code	Seal kit
B-Buna - N	120335
V-Viton	120336

Housing

Code	Ports & Material	Housing Model Code
00	No Housing	No Housing
4B	AL, 1/2 BSP	CP12-3S-4B/2B
6B	AL, 3/4 BSP	CP12-3S-6B/2B
10S	AL, #10 SAE	CP12-3S-10S/4S
12S	AL, #12 SAE	CP12-3S-12S/4S

* Aluminum bodies are to be used for pressures less than 210 bar [3000 psi].
* Additional housings available

Adjustment Option

A - Internal
E - External
F - Tamper Resistant
K - Knob

Pressure Setting

Code x10 - Pressure setting in psi
(50 psi increments within specified Pressure Range)
XXX-Standard setting (see Pressure Range for value)
Example:

Code	Bar	Psi
150	103	[1500]

Pressure Range

Code	Bar	Psi
A	14-55	[200-800]
Standard Setting	28	[400]
B	21-103	[30-1500]
Standard Setting	69	[1000]
C	28-207	[400-3000]
Standard Setting	103	[1500]
D	28-345	[400-5000]
Standard Setting	103	[1500]