

Sequence and Unloading Valves

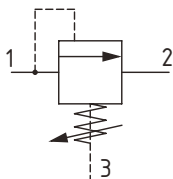
CP241-8

Sequence Valve, Direct Acting, Spool Type, Internal Pilot, External Drain
210 bar [3000 psi] • 150 l/min [40 US gpm]

DESCRIPTION AND OPERATION

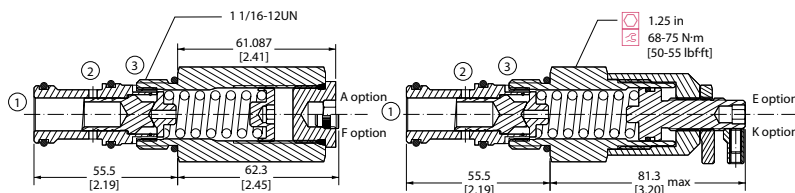
This is a direct acting, spool type sequence valve that opens from port 1 to port 2 when the setting is reached, which can be used to sequence operations in a system limiting pressure loss. Connecting port 3 to tank allows this valve to be used as a relief with a consistent setting in applications with high backpressure variation. This valve is ideal for sequencing a secondary operation, while maintaining pressure in the first or as a compensator in a load sense system.

SCHEMATIC



DIMENSIONS

mm [in]



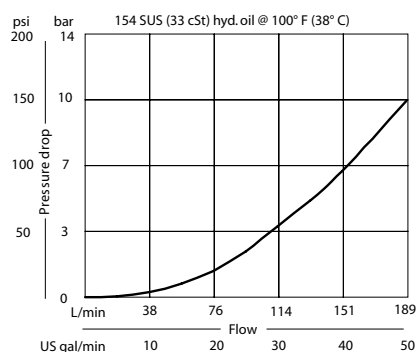
PERFORMANCE DATA

Rated pressure	210 bar [3000 psi]
Rated flow @ 7 bar [100 psi]	150 l/min [40 US gpm]
Max setting	41 bar [600 psi]
Weight	0.41 kg [0.90 lb]
Cavity	CP12-3S

Note: Maximum 105 bar [1500 psi] differential allowed between ports 2 and 3

PERFORMANCE CURVES

Pressure Drop



MODEL CODE

CP241 - 8 - B - 10S - A - C - 050

Seal Option

Code	Seal kit
B -Buna - N	120680
V -Viton	120681

Housing

Code	Ports & Material	Housing Model Code
0	No Housing	No Housing
4B	AL, 1/2 BSP	CP12-3S-4B/2B
6B	AL, 3/4 BSP	CP12-3S-6B/2B
10S	AL, #10 SAE	CP12-3S-10S/4S
12S	AL, #12 SAE	CP12-3S-12S/4S

* Aluminum bodies are to be used for pressures less than 210 bar [3000 psi].
 * Additional housings available

Adjustment Option

A - Internal
E - External
F - Tamper Resistant
K - Knob

Pressure Setting

Code x10 - Pressure setting in psi (10 psi increments within specified Pressure Range)
XXX-Standard setting (see Pressure Range for value)
 Example:

Code	Bar	Psi
050	3.5	[500]

Pressure Range

Code	Bar	Psi
A	1-10	[13-150]
Standard Setting	3.4	[50]
B	3.4-28	[50-400]
Standard Setting	7	[100]
C	5.5-41	[80-600]
Standard Setting	14	[200]