

Sequence and Unloading Valves

VDB 06-CN

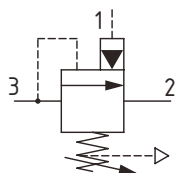
Unloading Valve, Differential Area, Poppet Type, Hydraulic Pilot, Atmospheric Vent

350 bar [5000 psi] • 80 l/min [21 US gpm]

DESCRIPTION AND OPERATION

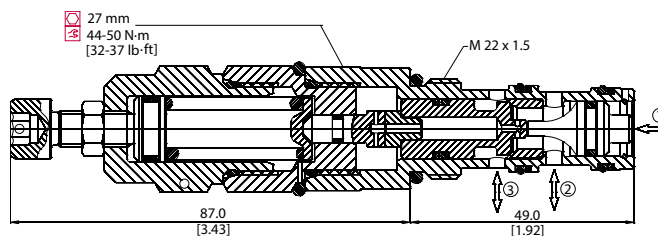
This is a hydraulically pilot operated, poppet type unloading valve with an atmospheric vent. Port 3 is closed until pressure rises above the relief setting, allowing flow from port 3 to port 2. Pilot pressure on port 1 will reduce the relief valve setting and eventually open the valve fully. This is ideal for use in two-pump unloading circuits where a gradual reduction in low pressure flow is preferred.

SCHEMATIC



DIMENSIONS

mm [in]

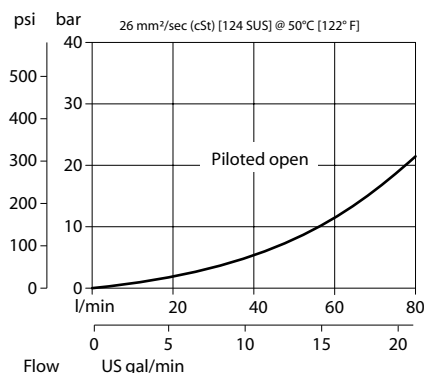


PERFORMANCE DATA

Rated pressure	350 bar [5000 psi]
Rated flow @ 7 bar [100 psi]	80 l/min [21 US gpm]
Weight	0.29 kg [0.64 lb]
Cavity	NCS06/3

PERFORMANCE CURVES

Pressure Drop



MODEL CODE

VDB 06 - CN - 1 - A - 00 - V - 60

Pressure Range

Code	Bar	Psi
1	25-140	[360-2030]
Standard Setting		Not set
2	70-210	[1015-3000]
Standard Setting		Not set
3	105-350	[1520-5000]
Standard Setting		Not set

Pilot Ratio

A-7.1:1
B-4.1:1
E-1:1

Pressure Setting

Code-Pressure setting in bar (5 bar increments within specified Pressure Range)
XXX-Standard setting (see Pressure Range for value)
Example:

Code	Bar	Psi
60	60	[870]

Seal Option

Code	Seal kit
Omit-Buna - N	230000070
V-Viton	230000110

Housing

Code	Ports & Material	Housing Model Code
00	No Housing	No Housing
SE3/8	AL, 3/8 BSP	NCS06/3-SE-3/8
SE1/2	AL, 1/2 BSP	NCS06/3-SE-1/2
SE6S	AL, #6 SAE	NCS06/3-SE-6S
SE8S	AL, #8 SAE	NCS06/3-SE-8S

* Aluminum bodies are to be used for pressures less than 210 bar [3000 psi].

* Additional housings available