

Shuttle Valves

CP720-3

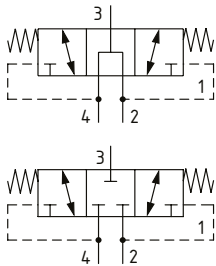
Hot Oil Shuttle Valve
350 bar [5000 psi] • 25 l/min [7 US gpm]



DESCRIPTION AND OPERATION

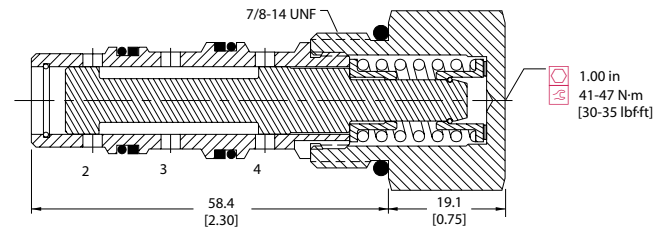
This valve has an internally piloted spool that directs flow from the lower pressure inlet, 2 or 4, to the output at 3.

SCHEMATIC



DIMENSIONS

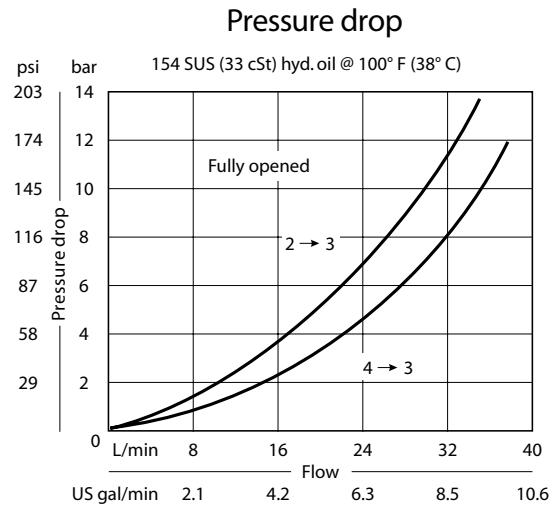
mm [in]



PERFORMANCE DATA

Rated pressure	350 bar [5000 psi]
Rated flow at 7 bar [100psi]	25 l/min [7 US gpm]
Leakage	82 cm ³ /min [5 in ³ /min] @ 207 bar [3000 psi]
Weight	0.15 kg [0.34 lb]
Cavity	SDC10-4

PERFORMANCE CURVES



MODEL CODE

CP720 - 3 - B - 8S - 080 - C

Seal Option

Code	Seal kit
B -Buna-N	11032943
V -Viton	11032944

Housing

Code	Ports & Material	Housing Model Code
0	No Housing	No Housing
L3B	Al, 3/8 BSP	SDC10-4-L-3B
L4B	Al, 1/2 BSP	SDC10-4-L-4B
6S	Al, #6 SAE	CP10-4-6S-X1
8S	Al, #8 SAE	CP10-4-8S-X1
S6S	Ductile, #6 SAE	CP10-4-S6S
S8S	Ductile, #8 SAE	CP10-4-S8S

* Aluminum bodies are to be used for pressures less than 210 bar [3000 psi].
 * Additional housings available

Spool Configuration

0-Open
C-Closed

Shift Pressure

Code	Bar	Psi
050	3.4	[50]
080	5.5	[80]