

# Shuttle Valves

## CP721-3

Hot Oil Shuttle Valve

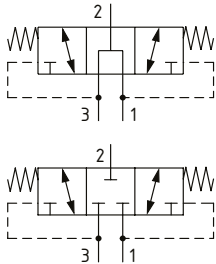
350 bar [5000 psi] • 90 l/min [24 US gpm]



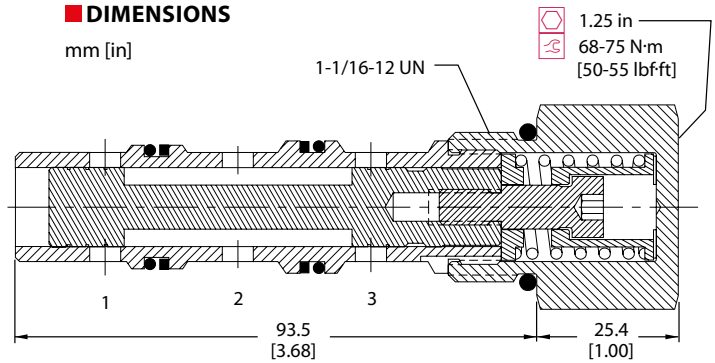
### DESCRIPTION AND OPERATION

This valve has an internally piloted spool that directs flow from the lower pressure inlet, 1 or 3, to the output at 2.

### SCHEMATIC



### DIMENSIONS

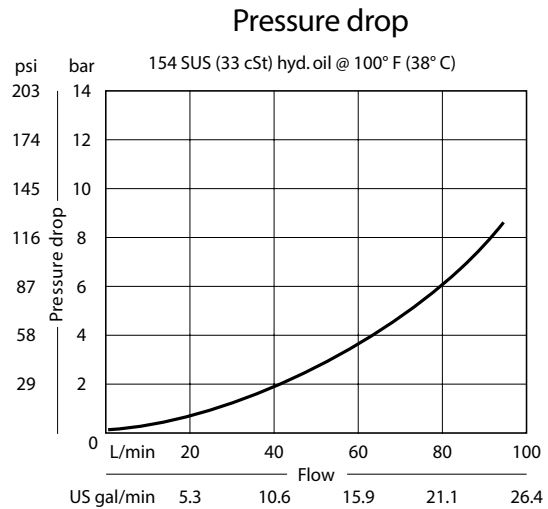


### PERFORMANCE DATA

Rated pressure*	350 bar [5000 psi]
Rated flow at 7 bar [100psi]	90 l/min [24 US gpm]
Leakage	82 cm <sup>3</sup> /min [5 in <sup>3</sup> /min] @ 207 bar [3000 psi]
Weight	0.34 kg [0.75 lb]
Cavity	CP12-3M

\*Rated pressure based on NFPA fatigue test standard [at 1 million cycles]

### PERFORMANCE CURVES



### MODEL CODE

CP721 - 3 - B - 125 - 100 - C

#### Seal Option

Code	Seal kit
B	Buna-N 120098
V	Viton 120099

#### Housing

Code	Ports & Material	Housing Model Code
0	No Housing	No Housing
6B	AL, 3/4 BSP	CP12-3M-6B
10S	AL, #10 SAE	CP12-3M-10S
12S	AL, #12 SAE	CP12-3M-12S
S12S	Ductile, #12 SAE	CP12-3M-S12S

\* Aluminum bodies are to be used for pressures less than 210 bar [3000 psi].

\* Additional housings available

#### Spool Configuration

0-Open  
C-Closed

#### Shift Pressure

Code	Bar	Psi
025	1.6	[25]
050	3.4	[50]
100	6.9	[100]